

Dastgāh Piece #5

Global Score

Rich Perks

Dastgāh Piece #5 - Global Score



Time: 0'.00" 1'.00" approx 2'.00" approx

Tar

Darāmad:
 (See supplementary Dastgāh system)

mp *mf* *ppp*

Fade to tacet once 7/8 pulse is fully established

TACET

Wind (Concert)

Enter, when ready, after live Electronics

Tone Row:
 Embellish these notes using mode of Darāmad, echo tar phrases etc. (Start with long tone row notes)

p *mf*

Increasingly Embellish; gradually shorten length of tone row notes. (See supplementary score)

MERGE

After guitar entry, when ready, Merge into improvisation on guše 2.

Guše 2:
 Improvise around Guše 2 melody. etc.

(See supplementary Dastgāh system)

Fretless Guitar

Enter shortly after Tar falls silent

Groove:
 Develop part by ad. libbing, then SUPPORT wind.

ppp *mf*

FADE IN (with Envelope filter)

etc.

ad. lib.

Percussion

Enter with wind

Decorative:
 Broken/ no pulse. AUGMENT Tar.

p *mf*

Gradually introduce 7/8 pulse as wind develops. (See supplementary score)

♩ = 160 approx.

Augment guitar

Live Elect.

Record & Regurgitate:
 Start to regurgitate material after approx. 20 secs.

Cont. sim.

Build intensity as 7/8 pulse becomes more obvious

Introduce textural SUPPORT (accomp.) shortly after guitar enters.

'Call & Response' with wind. Cont. *mp*

Cont. *mf*

Time: 3'.00" approx 3'.30" approx 4'.00" approx 5'.00" approx

Enter when ready, after L.E. goes to texture only.

Stop Suddenly: in unison with Wind. (after guitar Tacet)

Tar

Support wind with tremelo based improv. on mode of Guše 2:
mf

Build Intensity *ff*

TACET

Wind

Cont. sim. *f*

Build Intensity

As L. E. and Perc. begin to fade, Merge into Free Solo.

MERGE

Free Solo

Build Intensity *fff*

Stop Suddenly: in unison with Tar. (after guitar Tacet)

TACET

F. Gtr.

Cont. sim. *f*

Embellish increasingly as wind develops; Use predominantly mode of Guše 2. (See supplementary Dastgāh system)

As Tar enters, increasingly free note choice.

Once wind solo is underway, Become Disjointed & breakdown accompaniment.

Stop when ready.

TACET

Perc.

Cont. sim. *f*

Embellish by echoing rhythms of Tar and Wind (See supplementary score)

Fade with L.E. *ppp*

TACET

L. Elct.

Cont. sim. *ppp*

Become disjointed and fade as Wind develops.

TACET

Cont. Texture. *ppp*

Fade with percussion

TACET

After Tar re-enters; Fade to Tacet in Unison.

B

5'.00"
approx

6'.30"
approx

7'.30"
approx

Enter once 6/8 pulse is established.

Guše 4:



f (See supplementary Dastgāh system)

Enter when ready after L.E. begins to regurgitate Daramad

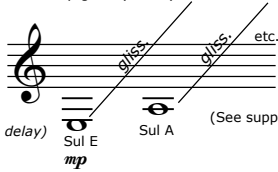
Guše 4:

8 *Improvise around Guše 4 melody (any register at any moment)*



f (See supplementary Dastgāh system)

Enter after very short silence.
Texture: Arbitrary gliss. (atonal).



(with reverse delay)
mp (See supplementary score)

Embellish texture using notes/ motifs from Darāmad

mf

As Wind enters with Guše 4,
echo phrases from Tar, Wind and L.E.

(See supplementary score)

(add envelope filter)

f

Enter when ready, after guitar.

FREE SOLO

mf

Build Intensity

ff

MERGE

mf

Introduce strong 6/8 pulse; Open tempo.

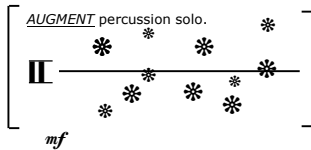
(6)
(8)

(See supplementary score)

Embellish & Ad. Lib.

f

Enter when ready, after percussion.



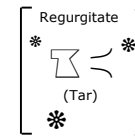
mf

Cont. Sim.

Build Intensity

f

Shortly after Tar enters, improvise
using previously rec. material from A.
(Embellish with *)



Build Intensity

AUGMENT tar & wind with High intensity

9'.00"
approx

10'.00"
approx

Tar $\xrightarrow{\text{Merge into Forud with Wind.}}$

Wind $\xrightarrow{\text{Initiate Merge to Forud when ready}}$ $\xrightarrow{\text{Merge (See supplementary score)}}$

F. Gtr. $\xrightarrow{\text{Merge into Forud with Wind.}}$

Perc. $\xrightarrow{\text{Cont. Sim.}}$ $\xrightarrow{\text{Hold roll on trill.}}$ $\xrightarrow{\text{Join others for last 3 hits e.g.}}$

L. Elct. $\xrightarrow{\text{Cont. Sim.}}$ $\xrightarrow{\text{Fade to Tacet on trill.}}$ $\xrightarrow{\text{PPP}}$ $\xrightarrow{\text{TACET}}$

Forud: ϕ tr $\text{Hold on trill in unison:}$

(See supplementary score/ Dastgāh system)