

Biological Sciences: Neurobiology

**Neural fate of seen and unseen faces in visuospatial neglect: A combined event-related fMRI and ERP study**

Patrik Vuilleumier (1,7)

Noam Sagiv (1,2)

Eliot Hazeltine (3)

Russel A. Poldrack (4,5)

Diane Swick (1)

Robert D. Rafal (1,6)

John D.E. Gabrieli (4)

(1) Dept of Neurology, University of California, Davis, & VAMC, Martinez, CA

(2) Dept of Psychology, University of California, Berkeley, CA

(3) NASA-Ames Research Center, Moffett Field, CA

(4) Dept of Psychology, Stanford University, CA

(5) Massachusetts General Hospital, NMR Center, Charlestown, MA

(6) School of Psychology, Bangor, Wales, UK

(7) Institute of Cognitive Neuroscience, University College London, UK

Correspondence to:

Dr P. Vuilleumier, Institute of Cognitive Neuroscience, University College London

Alexandra House, 17 Queen Square, London WC1 3AR, U.K.

Phone: (+44) 20-7679-1123

Fax: (+44) 20-7813-2835

E-mail: p.vuilleumier@ucl.ac.uk

Manuscript information:

number of text pages (including references and figure legends): 16

number of figures: 4

number of tables: 1

word count for abstract: 220 words, 1481 characters (including spaces)

word count for paper: 5368 words, 34164 characters (including spaces)

## **Abstract**

To compare neural activity produced by visual events that escape or reach conscious awareness, we used event-related magnetic resonance imaging and evoked potentials in a patient who had neglect and extinction after focal right parietal damage, but intact visual fields. This neurological disorder entails a loss of awareness for stimuli in the field contralateral to a brain lesion when stimuli are simultaneously presented on the ipsilateral side, even though early visual areas may be intact, and single contralateral stimuli may still be perceived. fMRI and ERPs were performed during a task where faces or shapes appeared in the right, left, or both fields. Unilateral stimuli produced normal responses in V1 and extrastriate areas. In bilateral events, left faces that were not perceived still activated right V1 and inferior temporal cortex, and evoked non-significantly reduced N1 potentials, with preserved face-specific negative potentials at 170 ms. When left faces were perceived, the same stimuli produced greater activity in a distributed network of areas including right V1 and cuneus, bilateral fusiform gyri, and left parietal cortex. Also, effective connectivity between visual, parietal, and frontal areas increased during perception of faces. These results suggest that activity can occur in V1 and ventral temporal cortex without awareness, while coupling with dorsal parietal and frontal areas may be critical for such activity to afford conscious perception.

## **Introduction**

Right parietal damage may cause a loss of awareness for contralateral (left) sensory inputs, such as hemispatial neglect and extinction (1-3). Visual extinction is the failure to perceive a stimulus in the contralesional field when presented together with an ipsilesional stimulus (bilateral simultaneous stimulation, BSS), even though occipital visual areas are intact and unilateral contralesional stimuli can be perceived when presented alone. It reflects a deficit of spatial attention towards the contralesional side, excluding left inputs from awareness in the presence of competing stimuli (2, 3). Spatial attention involves a complex neural network centered on the right parietal lobe (4, 5), but how parietal and related areas interact with sensory processing in distant cortices is largely unknown.

Here we combined event-related functional resonance magnetic imaging (fMRI) and event-related potentials (ERPs) to study the regional pattern and temporal course of brain activity produced by seen and unseen stimuli in a patient with chronic neglect and extinction due to parietal damage. In keeping with intact early visual areas in such patients, behavioral studies suggest that some residual processing may still occur for contralesional stimuli without attention, or without awareness, including “preattentive” grouping (e.g. 6, 7) and semantic priming (e.g. 8). It has been speculated (3, 9) that such effects might relate to separate cortical visual streams, with temporal areas extracting object features for identification, and parietal areas encoding spatial locations and parameters for action (10). Since neglect and extinction follow parietal damage, residual perceptual and semantic processing might still occur in occipital and temporal cortex

without awareness, in the absence of normal integration with concomitant processing in parietal regions.

Our study tested this hypothesis using event-related imaging and electrophysiology measures, which are widely used to study mechanisms of normal attention (11, 12). There have been few imaging (e.g. 13) or ERP (e.g. 14) studies in neglect, and most examined activity at rest or during passive unilateral visual stimulation, rather than in relation to awareness or extinction on bilateral stimulation. However, a recent ERP study (15) found signals evoked by perceived, but not extinguished visual stimuli in a parietal patient. By contrast, functional imaging in another patient (16) showed activation of striate cortex by extinguished stimuli, although severe extinction on all bilateral stimuli precluded any comparison with normal perception. In our patient we used both fMRI and ERPs during a similar extinction task to determine the neural correlates of two critical conditions: (1) when contralesional stimuli are extinguished; (2) when the same stimuli are seen. Stimulus presentation was arranged so as to obtain a balanced number of extinguished and seen contralesional events across all bilateral trials. Like Rees et al. (16), we used face stimuli to exploit previous knowledge that face processing activates fusiform areas in temporal cortex (e.g. 17, 18), and elicits characteristic potentials 170-200 ms after stimulus onset (e.g. 19, 20, 21) in addition to other visual components such as P1 and N1 (e.g. 11). We reasoned that such responses might help tracing the neural fate of contralesional stimuli (seen or extinguished) at both early and later processing stages in the visual system.

## **Methods**

***Patient.*** CW is a 67-year-old right-handed male who had right middle cerebral artery infarct 2 years previously. He has participated in several behavioral studies (e.g. see 22). Anatomical MRI scans show focal damage in the inferior posterior parietal cortex, extending into the anterior white matter of the right hemisphere (fig. 1). Striate and extrastriate occipital cortex is intact. Neurological exam shows left hand weakness with poor position sense, astereognosis, and left extinction on double tactile stimulation. Visual fields are full on both sides but left extinction reliably obtained on bilateral simultaneous stimulation. CW is self-independent, but shows mild left spatial neglect on standard tests (letter cancellation: 15 left misses/60 targets; line bisection: mean 6 cm rightward deviation/180 cm-long lines). No neglect is apparent on reading and mental imagery

Visual extinction was assessed in an event-related design using the same task during two fMRI sessions and two ERP sessions, all performed within a 3 month period. Separate training sessions were given before fMRI and ERP studies to ensure adequate performance with the task while maintaining central fixation.

***Behavioral task.*** For both fMRI and ERPs, the stimuli comprised 10 different schematic faces and 10 different meaningless symmetrical shapes on a black background. They were presented on a computer screen during training and ERPs, and reflected from a LCD projector onto a mirror inside the scanner during fMRI. Trials began with a central fixation cross (2 sec), followed by a brief stimulus in the right (RVF), left (LVF), or both visual fields (bilateral simultaneous stimuli, BSS). The bilateral condition (BSS) with a left face and a right shape provided the critical experimental trials for extinction, in which

the face could be either perceived or extinguished by the patient on a given trial. BSS trials were intermixed with unilateral trials to prevent expectation biases.

The fMRI study consisted of 8 runs of pseudo-randomized trials (4 runs in each session, 700 events in total). There were 6 event types: unilateral trials, including a left or right face (Lf, Rf) and a left or right shape (Ls, Rs; n=50 for each type in each session); blank catch trials with only the fixation cross and no stimulus in either field (Fx, n=50 each session); and the critical bilateral trials with a left face and a right shape (BSSfs, n=100 each session). The ERP study included 4 blocks of pseudo-randomized trials (total 880 events). Again, there were 4 possible unilateral trials with either faces (Lf and Rf; n=30 and 30 in each block) or shapes (Ls and Rs; n=10 and 40 in each block), as well as the same critical bilateral trials with a left face and a right shape (BSSfs, n=80 each block). Blank catch trials were changed to bilateral trials with a shape on both sides (BSSss, n=30 each block). All stimuli subtended  $\sim 2^\circ$  and appeared  $\sim 6^\circ$  away from fixation. CW pressed one of two buttons (with his right hand) to indicate whether he did or did not see a face. He was instructed not to guess and to withhold from responding when unsure (3% of all BSS trials). Response buttons were aligned radially along his body midline. Average inter-stimulus interval was 4 sec for fMRI and 2.5 sec for ERPs.

For both fMRI and ERPs, stimulus exposure time was titrated to ensure adequate performance on unilateral trials together with a balanced number of extinguished and perceived contralesional stimuli on BSS trials (half of 20 BSS as a criterion during titration). After titration, stimulus duration was kept fixed at 250 ms for fMRI and 400 ms for ERPs. During experimental sessions, extinction rate was close to 1/2 in the ERP study, and slightly greater in the fMRI study (about 2/3).

*fMRI*. MR imaging was performed on a 1.5T GE Signa MR scanner with a custom head coil. High-resolution T1-weighted anatomical images were collected. Functional data were acquired using a single-shot gradient-echo spiral pulse sequence (TR = 2000 ms, TE = 40 ms), with 18 axial slices (6mm thick, 1 mm spacing). Each session comprised 4 runs of 261 scans. Motion was corrected using AIR 3.0. Scans were realigned, normalized, and smoothed (6 mm FWHM Gaussian kernel). Data were analyzed using the general linear model in SPM99 (23). The critical bilateral trials (BSSfs) were sorted according to perceptual report (i.e., left face perceived or extinguished) and these two conditions separately modelled. Statistical maps resulted from linear contrasts between different trial types, thresholded at  $p=.001$  (uncorrected in visual areas, corrected for the whole brain otherwise), and overlaid on coregistered anatomical images averaged across sessions. We also performed an analysis of effective connectivity (24) to detect voxels in the whole brain where activity changed as a function of the signal observed in a particular area (i.e. V1 or fusiform gyrus, defined by previous contrasts) in the context of a specific event type (i.e. perception vs extinction of left faces). This was done by fitting the general linear model at every voxel with two additional regressors: one being the activity at the maxima of interest (V1 or fusiform), and the second created by multiplying activity in this maxima with the difference between the regressors that modelled trials with perception versus trials with extinction. The multiplication in the second regressor represents the interaction between activity in the area of interest and the difference in awareness, and thus indicates significant changes in the coupling of any distant region with respect to activity in the area of interest on a trial-by-trial basis.



**ERPs.** Continuous EEG was recorded from 31 scalp locations using tin electrodes attached to an elastic cap, with ground and reference placed on forehead and nose, respectively (19). Additional electrodes measured horizontal and vertical electro-oculogram. EEG was sampled at 250Hz and amplified 50,000-fold with a frequency bandpass of 0.1Hz to 40Hz. Electrode impedance was below 5k $\Omega$ . A digital bandpass filter of 0.5Hz to 20Hz was applied before analysis. Codes synchronized to stimulus onset were used to average epochs associated with each condition. After removing trials with eye blinks, data from the 4 blocks were pooled together, randomly reshuffled, and sorted into 8 smaller blocks with an equal number of trials, so as to obtain repeated measures in the same subject and exclude any variance due to practice or fatigue (15). Mean amplitudes were calculated over 10 ms intervals at specific latency ranges and electrodes, relative to a 50 ms pre-stimulus baseline. Different conditions were compared using analysis of variance (ANOVA) and paired t-tests on average amplitudes across blocks.

## **Results**

**fMRI.** The patient correctly detected 98% of unilateral RVF stimuli and 83% of unilateral LVF stimuli. He withheld from responding on 7/200 BSS and 100/100 catch trials. He extinguished 68% of LVF faces on BSS trials (57/200 vs 85/100 left faces seen on bilateral vs unilateral displays;  $\chi^2(1)=85.4$ ,  $p<.0001$ ).

**Hemifield and face-specific responses.** Unilateral trials were used to determine regions activated by LVF stimuli, regardless of their type, and those activated by seen faces, regardless of field. Several occipital and temporal areas (table 1) including right

primary visual cortex (V1; fig. 2A) were activated by LVF stimulation ( $Lf+Ls > Rf+Rs$ ), indicating preserved inputs to visual cortex in the damaged hemisphere. Unilateral RVF stimuli activated similar left hemisphere areas. Right inferior temporal gyrus and bilateral fusiform areas were activated by seen faces, regardless of field ( $Lf+Rf > Fx$ ; table 1 and fig. 2B). Right anterior fusiform activity ( $x\ y\ z = 32\ -66\ -22$ ) was specifically observed for faces as compared to shapes ( $Lf+Rf > Ls+Rs$ ), like in normal subjects (18).

Seen and unseen faces. The two crucial comparisons concerned the neural activity distinguishing extinction or perception of a left face during bilateral trials. To examine the effect of unseen faces, we compared bilateral trials with an extinguished face in LVF to those with a right shape alone ( $BSSfs\ extinguished > Rs$ ), i.e., same awareness but different stimuli in LVF. This comparison showed no significant activation at the usual statistical threshold of  $p=.001$  ( $T= 3.09$ ). However, lowering the threshold to  $p=.005$  ( $T= 2.56$ ) revealed three foci of activity: in right striate cortex (V1) and bilateral postero-inferior temporal gyri (table 1). These temporal foci were just lateral to fusiform areas activated by seen faces (fig. 2C).

Awareness of LVF faces was examined by comparing physically identical bilateral trials when the face was perceived and when it was not ( $BSSfs\ seen > BSSfs\ extinguished$ ), i.e., same stimuli but different awareness. This revealed increased activity in several areas of both hemispheres (table 1 & fig. 2D), including right V1, bilateral cuneus, both fusiform gyri, and superior parietal cortex in the intact left hemisphere (intraparietal sulcus). Figure 2EFG shows the time course of activity in peak voxels of interest across different conditions. Right V1 showed similar activity to seen and unseen faces in LVF, but no activity when no stimulus was present. By contrast, while both the

fusiform and inferior temporal gyri responded to seen faces (table 1), only the latter was active when faces were extinguished.

Finally, we tested for changes in effective connectivity between areas depending on awareness of LVF faces. A first analysis looked for voxels showing trial-specific increases that were coupled with the change of activity found in right V1 during perception as compared to extinction of a left face (BSSfs seen > BSSfs extinguished). Two clusters in left inferior frontal cortex (-48 30 -4, T=4.01; -46 24 -22, T=3.73;  $p < .0001$ ) showed such an increase, indicating a specific interaction between V1 and frontal areas during trials with awareness (fig. 3). A second analysis looked for voxels showing increases coupled with left fusiform activity during perception versus extinction of faces. Such changes were found again in left frontal cortex (-46 32 -10, T=4.15; -44 48 -8, T=4.05), as well as in inferior and superior left parietal cortex (-66 -42 28, T=4.18; -34 -72 46, T= 4.04), and anterior left temporal cortex (-54 6 -32, T= 4.43;  $p < .0001$  in all cases). The superior parietal activation was close to the peak obtained by contrasting seen versus extinguished stimuli (table 1).

**ERPs.** The patient reported 97% and 96% of unilateral stimuli in RVF and LVF, respectively. He extinguished 40% of LVF faces in critical BSSfs trials (115/120 vs 192/320 faces seen in unilateral vs bilateral displays;  $\chi^2(1) = 53.1$ ,  $p < .0001$ ). He made only one false alarm in reporting a face out of 120 displays with bilateral shapes.

Hemifield and face-specific responses. Unilateral trials were used to assess responses to perceived stimuli, regardless of their type. Contralateral stimuli (Lf+Ls) elicited early components at right occipital sites, with a positive waveform at ~80 ms post-onset (“P1”) and a negative waveform at ~130 ms (“N1”) (fig. 4A). ANOVA of P1

and N1 amplitudes with the factors hemisphere (right vs left), field (contralateral vs ipsilateral), and stimuli (face vs shape) revealed an interaction of field and hemisphere (P1:  $F(1,62)= 6.33, p=.015$ ; N1:  $F(1,62)= 7.95, p=.006$ ), but no other effect or interaction. Contralateral field P1 and N1 showed no hemispheric difference ( $F(1,30)\leq 2.14, p\geq .15$ ): right occipital responses to LVF stimuli were similar to left occipital responses to RVF stimuli (paired comparison across blocks, P1:  $t(7)= 1.21, p=.27$ ; N1:  $t(7)= 1.60, p=.15$ ). This is consistent with intact LVF input into right extrastriate areas (11). By contrast, ipsilateral field P1 and N1 showed a significant effect of hemisphere (P1:  $F(1,30)= 4.83, p=.04$ ; N1:  $F(1,30)= 5.16, p=.03$ ), with decreased responses on the damaged side. This might reflect abnormal callosal transfer, as previously found in neglect (15). Responses specific to faces in the LVF were also examined, by comparing all bilateral trials with a left face (BSSfs) versus left shape (BSSss), regardless of perception. While early components did not differ, LVF faces produced a negative wave ~170-180 ms post-onset in right posterior temporal regions (fig. 4B), consistent with the latency and location of face-selective signals in normals (“N170”, e.g. 19). This was replaced by a positivity with shapes in LVF, with a reliable difference at electrode T6 ( $F(1,14)= 8.58, p=.01$ ), clearly shown by the face-specific waveform obtained by subtraction (fig. 4C). In addition, a midline positivity was evoked by faces but not shapes ~190-200 ms post-onset (“P190”).

Seen and unseen faces. Again, the crucial comparisons concerned signals associated with extinction or perception of faces. Compared to RVF shapes alone (Rs), bilateral trials with a LVF face (BSSfs) evoked a larger right occipital N1 when the face was seen, non-significantly reduced when the face was extinguished (fig. 4D). ANOVA showed marginal effect of condition (Rs, BSSfs extinguished, BSSfs seen) on right

occipital P1 ( $F(2,21)=3.2$ ,  $p=.06$ ) but not N1 amplitude ( $F(2,21)<1$ ). However, planned comparisons indicated greater N1 with faces in LVF (seen or extinguished) as compared to Rs ( $t(7)=2.30$  and  $2.35$ , respectively,  $p\leq.05$ ), but no difference between seen and extinguished faces ( $t(7)=1.48$ ,  $p=0.18$ ). Compared to Rs alone, a right occipital P1 occurred with seen faces ( $t(7)= 2.66$ ,  $p=.03$ ) but not with extinction ( $t(7)= 1.68$ ,  $p=.14$ ), although the difference between these two conditions was not significant ( $t(7)=.43$ ).

In critical BSSfs trials, there was a similar negativity at 170-180 ms in the right posterior temporal region when the face was seen and when it was extinguished (fig. 4D), replaced by a positive wave with a RVF shape alone. T6 electrode amplitudes around 170 ms showed a main effect of condition ( $F(2,21)=6.82$ ,  $p=.005$ ), with a reliable difference between Rs alone and seen or extinguished faces in BSSfs ( $t(7)= 2.86$  and  $3.14$ , respectively,  $p\leq.02$ ), but no difference between seen and extinguished trials ( $t(7)= 1.23$ ,  $p=.26$ ). Eye movements were similar on extinction and unilateral right trials (fig. 4D), ruling out ERP differences due to saccades.

Compared to extinguished left faces, BSS trials with seen faces evoked a later positive wave at 190-200 ms over right central and midline regions (fig. 4D). The effect of condition (Rs, BSSfs extinguished, BSSfs perceived) was highly significant ( $F(2,21)=7.23$ ,  $p=.004$ ). Paired comparisons with Rs indicated that P190 occurred with seen ( $t(7)=3.63$ ,  $p=.008$ ) but not extinguished faces ( $t(7)=.76$ ,  $p=.47$ ), while perception and extinction differed from each other ( $t(7)=2.92$ ,  $p=.02$ ). However, eye position tended to differ around 200 ms, and may have contributed to the latter differences in ERP.

## **Discussion**

This study provides the first combined spatial and temporal analysis of neural activity evoked by seen and unseen stimuli in neglect, using both event-related imaging and electrophysiological measures. Our findings have implications not only for theories of extinction in parietal injury and mechanisms of attention, but also for the processing of faces, and more generally, for the neural correlates of visual awareness.

Both fMRI and ERPs showed that contralesional inputs can still activate striate and extrastriate areas in the damaged hemisphere after parietal lesion, even without awareness. By comparing fMRI signals for shapes presented alone in the normal RVF and the same shapes presented with an extinguished face in the LVF (i.e., different stimuli but same percept), we found that unseen faces activated right visual cortex (V1) and inferior temporal areas, just lateral to fusiform regions with face-specific responses. This activation was weak compared to seen stimuli, but remarkably specific. Moreover, these regions exhibited a similar time-course of activity when the face was extinguished or seen (fig. 2). Similarly, ERPs showed that extinguished faces elicited early occipital responses, with no significant reduction of N1 relative to seen faces (but no reliable P1). N1 latencies were shorter than those reported in young normals, on both the intact and lesioned sides, possibly due to our patient's age or neurological status. Unseen faces also evoked a later negativity in right temporal sites, not evoked by shapes, with the same latency as the N170 known to be selective for faces (19, 25).

On the other hand, fMRI showed that awareness of physically identical stimuli in the LVF (as compared to extinction) was associated with activation of a distributed network including primary cortex (V1), cuneus, bilateral fusiform gyri, and the intact left

parietal cortex. ERPs were also modulated by awareness, with non-significant increases of early occipital P1, and later anterior responses (~200 ms at midline).

In agreement with our results, another event-related fMRI study of visual extinction (16) found preserved activation of striate cortex by unseen stimuli. These authors also reported category-specific response to extinguished faces (as compared to pictures of houses) but only when examining a small predefined region of interest in the right fusiform gyrus, and at low statistical threshold. Their patient missed contralesional stimuli on all bilateral trials, precluding a comparison with perceived stimuli. By contrast, we were able to demonstrate distinct patterns of activity associated with seen and unseen faces, and found no evidence of unconscious activation in face-specific fusiform areas. Other PET or fMRI studies of tactile extinction yielded conflicting results, with either preserved (26) or decreased (27) activity of primary sensory cortex. However, their blocked design precluded assessment of single events with or without awareness. A single case study using ERPs (15) failed to demonstrate early visual responses (P1-N1) to extinguished stimuli. However, stimuli were small LEDs in far peripheral field, presumably evoking too weak activity in the visual system to allow reliable ERP signals without attention, and recordings were made at parietal, rather than occipital sites. In our patient, unseen faces elicited an early occipital N1 response, and also a later face negativity in the temporal region.

Neural activity evoked by stimuli without awareness has been found in normal subjects (28) or in hemianopic patients with blindsight (29, 30). Blindsight has raised questions as to the role of area V1 in visual awareness (31, 32) since its destruction suppresses vision despite residual unconscious performance. We found that V1 was still

activated by extinguished stimuli, without affording awareness (see also 16). Yet, V1 was further activated when contralesional faces were seen, as compared to activity elicited by unseen stimuli. This may suggest some critical interaction with modulatory or reentrant signals from other brain areas (33). In our patient, fMRI analysis of effective connectivity revealed that increases in V1 and fusiform activity during awareness of faces were coupled with increases in a network of frontal and parietal areas that are implicated in spatial attention in normals (4, 12, 34). These results also converge with recent evidence that attentional modulation can operate both at early and late stages of vision (11, 35, 36).

Preserved cortical activation by unseen faces in our study and others (16) illuminates the neural basis of residual processing in neglect and extinction, implicating object segmentation (6, 7, 37) or semantic analysis (8) in occipital and temporal cortex. However, this does not imply that activation in the ventral stream is fully intact (38). Unseen faces evoked a distinctive ERP negativity and fMRI activity in the inferior temporal gyrus, but only seen faces activated medial fusiform areas (fig. 2). These areas may subservise different aspects of face processing (39, 40). Inferior temporal cortex may encode face structure and be automatically engaged (41), while fusiform cortex may extract specific face traits (18) and is modulated by attention (42) or explicit detection of faces (43, 44).

This anatomical dissociation has implications for the generators of face-specific ERPs that occurred for extinguished faces. In normals, faces evoke a temporal negativity and a midline positivity between 170 and 190 ms (19, 20). Our data suggest that these components may reflect distinct sources (45, 46). N170 potentials might index an early stage of face processing in temporal cortex (19, 46), while positive potentials might



involve a distinct stage in fusiform and anterior regions (20, 21, 45). Consistent with this dissociation, N170 is not modulated by attention in normals (47).

It has been posited that visual awareness may depend on the ventral stream (10) and/or striate cortex (31), whereas dorsal parietal areas operate without awareness. However, our results and others (16, 30) show that striate and ventral activity is not sufficient to support awareness without some interaction with parietal, and perhaps frontal, areas. We found parietal activation in the intact hemisphere only when contralesional faces were seen (as opposed to extinguished), and a coupling of superior and inferior parietal regions with the fusiform gyrus specific to such events. We cannot entirely exclude a role of differential eye movements, but these parietal regions and cuneus have been implicated in distinct aspect of attention across a variety of tasks irrespective of eye movements (34, 48). Moreover, detection of a face in degraded stimuli is accompanied by long-distance coupling between parietal and occipitotemporal regions (43, 49). We suggest that visual awareness may relate to the integration of processing along both dorsal and ventral streams, binding “what” and “where” information about stimuli to afford selective attention and directed action (50). Damage to inferior parietal regions serving to link the dorsal and ventral streams might result in neglect and extinction, while residual processing might still occur in occipital and temporal areas without awareness.

## **Acknowledgments**

Parts of these results were reported at the Annual Meeting of the Swiss Society for Behavioral Neurology in Bern, October 1999, and at the Annual Meeting of the Cognitive Neuroscience Society in San Francisco, April 2000. This work was supported by the Swiss National Science Foundation (PV), McDonnell-Pew Program in Cognitive Neuroscience (RAP, DS), the NIDCD (DS), and USPHS (RDR). Many thanks to J. Armony for invaluable help in SPM analysis, as well as to T. Landis, P. Halligan, J. Driver, R. Dolan, N. Kanwisher, and S. Schwartz for helpful discussions.

## **Legends**

### **Fig. 1.**

Structural MRI brain scan of patient CW (axial slices), showing focal damage in inferior posterior parietal cortex (angular gyrus, thick arrows), extending into the subcortical white matter of the right hemisphere (dashed arrows).

### **Fig. 2.**

ABCD: Activated areas in fMRI, superimposed on the mean brain scan across sessions (left and middle: axial slices; right: coronal slices; z and y: Talairach coordinates).

Damaged right parietal areas are indicated by black arrows. (A) Retinotopic activation of right V1 by unilateral stimuli in LVF. (B) Bilateral activation of anterior and posterior fusiform gyri by seen faces, irrespective of field. (C) Activation of V1 (left) and inferior temporal cortex (middle and right) by extinguished faces, lateral to fusiform activation by seen faces in B. (D) Distributed activation produced by seen as compared to extinguished faces in BSS, including right V1, right cuneus, right insula, and left parietal cortex (middle and left). EFG: Time course of activity post-stimulus onset in peak voxel (weighted by smoothing of its surround) across different conditions. (A) Right V1 voxel activated by LVF stimuli, showing similar responses to unilateral left shapes and left faces in BSS, regardless of perception or extinction, but no response to unilateral right shapes. (B) Inferior temporal and (C) anterior fusiform voxels, both activated by seen faces irrespective of field, with the former responding to seen and extinguished faces in BSS more than to seen left shapes, and the latter responding only to seen faces.

### **Fig. 3.**

Changes in effective connectivity on bilateral trials when LVF faces were seen as compared to extinguished. Increased activity in striate cortex covaried with increases in inferior left frontal gyrus (blue-to-green foci), while increased fusiform activity covaried with increases in similar frontal regions, as well as in superior and inferior parietal cortex, and anterior temporal cortex (red-to-yellow foci).

**Fig. 4.**

ERPs at right occipital (O2), left occipital (O1), right posterior temporal (T6), and midline electrodes (CZ) for different conditions during 300 ms post-stimulus onset. (A) Unilateral stimuli (faces and shapes) in RVF and LVF evoked an early contralateral occipital positivity at ~80 ms (“P1”) and negativity at ~120 ms (“N1”). (B) Left faces in bilateral trials (BSSfs) as opposed to left shapes (BSSss) evoked a specific negativity at right posterior temporal site (~170 ms post-onset) and a positivity at midline (~190 ms post-onset), but similar occipital N1 (regardless of perception, as in averaged ERPs shown here). Eye movements (HEOG) were similar and cannot explain this ERP difference. (C) Difference waveform obtained by subtracting ERPs to left faces from ERPs to left shapes in BSS, clearly showing a face-specific negativity in right temporal region (“N170”). (D) Perception versus extinction. Compared to a right shape alone (Rs), bilateral stimuli with a LVF face (BSSfs) evoked a right occipital “N1” and a temporal “N170”, both when the face was seen and when it was extinguished. Eye movements were similar during Rs and extinction trials, and cannot explain this ERP difference. A later positivity at midline (~190 ms post-onset) occurred only when faces were seen (“P190”). Oculographic differences after ~200 ms might partly contribute to this signal.

## References

1. Heilman, K. M., Watson, R. T. & Valenstein, E. (1993) in *Neglect and related disorders*, eds. Heilman, K. M. & Valenstein, E. (Oxford University Press, New York), pp. 279-336.
2. Rafal, R. D. (1994) *Curr Op Neurobiol* **4**, 231-236.
3. Driver, J. & Mattingley, J. B. (1998) *Nat Neurosci* **1**, 17-22.
4. Mesulam, M. M. (1981) *Ann Neurol* **4**, 309-325.
5. Posner, M. I. & Petersen, S. (1990) *Ann Rev Neurosci* **13**, 25-42.
6. Ward, R., Goodrich, S. & Driver, J. (1994) *Visual Cogn* **1**, 101-129.
7. Vuilleumier, P. & Landis, T. (1998) *Neuroreport* **9**, 2481-2484.
8. Berti, A. & Rizzolatti, G. (1992) *J Cogn Neurosci* **4**, 345-351.
9. Driver, J. & Vuilleumier, P. (in press) *Cognition* .
10. Milner, A. D. & Goodale, M. A. (1995) *The visual brain in action* (Oxford University Press, Oxford).
11. Hillyard, S. A., Teder-Sälerävi, W. A. & Münte, T. F. (1998) *Curr Op Neurobiol* **8**, 202-210.
12. Corbetta, M. & Shulman, G. L. (1998) *Phil Trans Roy Soc B-Biol Sci* **353**, 1353-1362.
13. Perani, D., Vallar, G., Paulesu, E., M, A. & Fazio, F. (1993) *Neuropsychologia* **31**, 2115-25.
14. Vallar, G., Sandroni, P., Rusconi, M. L. & Barbieri, S. (1991) *Neurology* **41**, 1918-1922.

15. Marzi, C., Girelli, M., Miniussi, C., Smania, N. & Maravita, A. (2000) *J Cogn Neurosci* **12**, 869-877.
16. Rees, G., Wojciulik, E., Clarke, K., Husain, M., Frith, C. D. & Driver, J. (2000) *Brain* **123**, 1624-1633.
17. Sergent, J., Ohta, S. & B, M. (1992) *Brain* **155**, 15-36.
18. Kanwisher, N., McDermott, J. & Chun, M. M. (1996) *Neuroimage* **3**, S361.
19. Bentin, S., Allison, T., Puce, A., Perez, E. & McCarthy, G. (1996) *J Cogn Neurosci* **8**, 551-565.
20. Jeffreys, D. A. (1996) *Visual Cogn* **3**, 1-38.
21. Allison, T., Puce, A., Spencer, D. & McCarthy, G. (1999) *Cereb Cortex* **9**, 415-430.
22. Vuilleumier, P. & Rafal, R. (1999) *Nat Neurosci* **2**, 783-784.
23. Friston, K. J., Holmes, A. P., Worsley, K. J., Poline, J. B., Frith, C. D. & Frackowiak, R. S. (1995) *Hum Brain Map* **2**, 189-210.
24. Friston, K. (1994) *Hum Brain Map* **2**, 56-78.
25. Eimer, M. (2000) *Cogn Neuropsychology* **17**, 103-116.
26. Beversdorf, D. Q., Anderson, J. M., Auerbach, E. J., Briggs, R. W., Hughes, J. D., Crosson, B. & Heilman, K. M. (1999) *Neurology* **52**, Suppl 2, A232.
27. Remy, P., Zilbovicius, M., Degos, J. D., Bachoud-Lévy, A. C., Rancurel, G., Cesaro, P. & Samson, Y. (1999) *Neurology* **52**, 571-577.
28. Sobel, N., Prabhakaran, V., Hartley, C. A., Desmond, J. E., Glover, G. H., Sullivan, E. V. & Gabrieli, J. D. E. (1999) *Brain* **122**, 209-217.
29. Sahraie, A., Weiskrantz, L., Barbur, J. L., Simmons, A., Williams, S. C. R. & Brammer, M. J. (1997) *Proc Natl Acad Sci USA* **94**, 9406-9411.

30. Baseler, H. A., Morland, A. B. & Wandell, B. A. (1999) *J Neurosci* **19**, 2619-1627.
31. Weiskrantz, L. (1986) *Blindsight: A case study and implications* (Oxford University Press, Oxford).
32. Crick, F. & Koch, C. (1995) *Nature* **375**, 121-123.
33. Corthout, E., Uttl, B., Ziemann, U., Cowey, A. & Hallett, M. (1999) *Neuropsychologia* **37**, 137-145.
34. Corbetta, M., Kincade, J. M., Ollinger, J. M., McAvoy, M. P. & Shulman, G. L. (2000) *Nat Neurosci* **3**, 292-297.
35. Ghandi, S. P., Heeger, D. J. & Boyton, G. M. (1999) *Proc Nat Acad Sci USA* **96**, 3314-19.
36. Somers, D. C., Dale, A. M., Seiffert, A. E. & Tootell, R. B. H. (1999) *Proc Nat Acad Sci USA* **96**, 1663-68.
37. Driver, J., Baylis, G. C. & Rafal, R. D. (1993) *Nature* **360**, 73-75.
38. Farah, M. J., Monheit, M. A., Brunn, J. L. & Wallace, M. A. (1991) *Neuropsychologia* **29**, 949-958.
39. George, N., Dolan, R. J., Fink, G. R., Baylis, G. C., Russell, C. & Driver, J. (1999) *Nat Neurosci* **2**, 574-580.
40. Haxby, J. V., Hoffman, E. A. & Gobbini, M. I. (2000) *Trends Cogn Neurosci* **4**, 223-232.
41. Grill-Spector, K., Kushnir, T., Edelman, S., Avidan, G., Itchak, Y. & Malach, R. (1999) *Neuron* **24**, 187-203.
42. Wojciulik, E., Kanwisher, N. & Driver, J. (1998) *J Neurophysiol* **79**, 1574-1578.

43. Dolan, R. J., Fink, G. R., Rolls, E., Booth, M., Holmes, A., Frackowiak, R. S. J. & Friston, K. J. (1997) *Nature* **389**, 596-599.
44. Tong, F., Nakayama, K., Vaughan, J. T. & Kanwisher, N. (1998) *Neuron* **21**, 753-759.
45. George, N., Evans, J., Fiori, N., Davidoff, J. & Renault, B. (1996) *Cogn Brain Res* **4**, 65-76.
46. Bentin, S. & Deouell, L. Y. (2000) *Cogn Neuropsychology* **17**, 35-54.
47. Séverac Cauquil, A., Edmonds, G. E. & Taylor, M. J. (2000) *Neuroreport* **11**, 2167-71.
48. Wojciulik, E. & Kanwisher, N. (1999) *Neuron* **23**, 747-764.
49. Rodriguez, E., George, N., Lachaux, J.-P., Martinerie, J., Renault, B. & Varela, F. J. (1999) *Nature* **397**, 430-433.
50. Robertson, L., Treisman, A., Friedman-Hill, S. & Grabowecky, M. (1997) *J Cogn Neurosci* **9**, 295-317.



**Table 1. Regional brain activation in fMRI.**

Cortical areas	Talairach coordinates			T-value
	x	y	z	
<b>LVF related stimulation (Lf+Ls &gt; Rf+Rs)</b>				
Right striate	4	-78	8	3.62
Right cuneus	6	-52	2	3.70
Right inferior temporal gyrus	48	-64	6	3.88
Right middle temporal gyrus	64	0	-2	4.33
Left middle temporal gyrus	-68	0	-6	4.03
<b>Face related activation (Lf+Rf &gt; Fixation)</b>				
Right anterior fusiform gyrus	22	-48	-22	4.13
Right posterior fusiform gyrus	22	-74	-20	3.85
Right inferior temporal gyrus	40	-70	-16	3.97
Right anterior fusiform gyrus	32	-66	-22	3.75
Left anterior fusiform gyrus	-38	-48	-24	4.51
Left inferior temporal gyrus	-40	-70	-22	4.00
<b>(Lf+Rf &gt; Ls+Rs)</b>				
Right anterior fusiform gyrus	32	-66	-22	4.01
<b>Extinguished stimuli (BSSfs ext &gt; Unilat Rs)</b>				
Right striate	0	-80	12	2.56
Right inferior temporal gyrus	58	-44	-22	2.51
Left inferior temporal gyrus	-48	-38	-20	2.60
<b>Perceived stimuli (BSSfs perc &gt; BSSfs ext)</b>				
Right striate	8	-94	0	3.60
Right cuneus	4	-58	8	3.47
Right cuneus	6	-78	32	3.25
Right parahippocampal gyrus	14	-56	-6	3.95
Right anterior fusiform gyrus	32	-66	-22	3.57
Right posterior insula	38	-20	-2	4.60
Left pre-cuneus	-20	-66	20	3.70
Left fusiform gyrus	-22	-68	-20	4.69
Left parietal (IPS)	-28	-76	30	4.25

Note that coordinates refer to normalized space of Talairach atlas, but anatomical areas correspond to the patient's own brain as defined from his MRI scan and do not necessarily match the same region coordinates in Talairach atlas.

Fig.1.

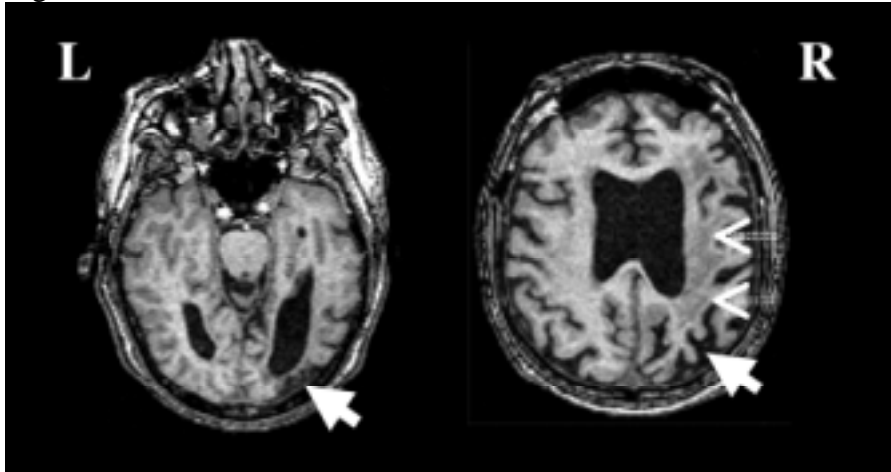


Fig. 2.

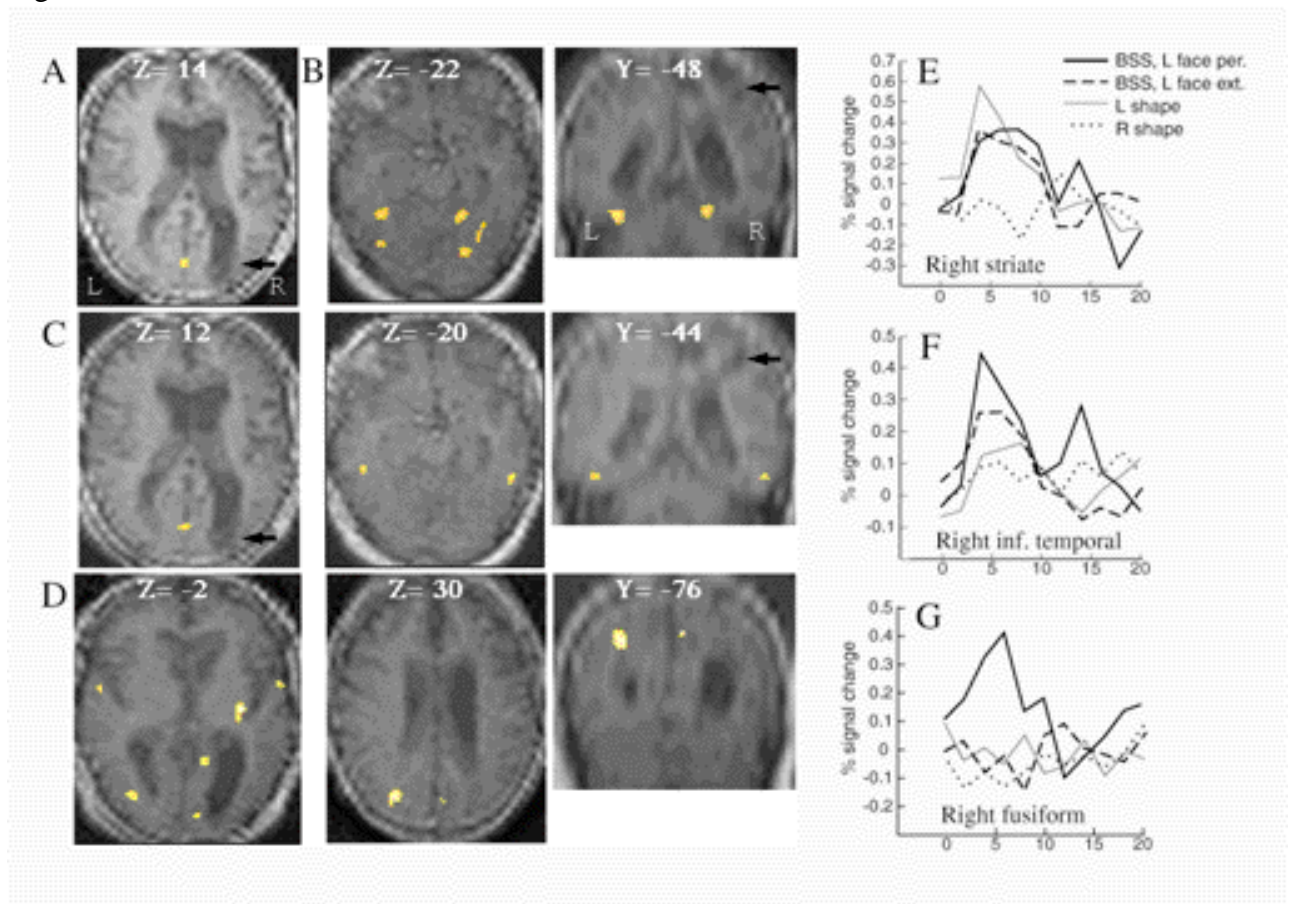


Fig. 3.

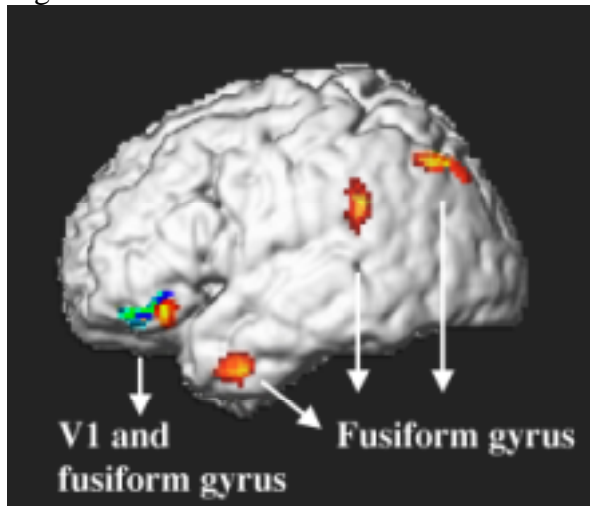


Fig. 4.

