

# Film or Film Brand? UK Consumers' Engagement with Films as Brands

Gurdeep Singh Kohli, Dorothy Yen, Sharifah Alwi<sup>1</sup>  
and Suraksha Gupta <sup>1</sup>

Brunel Business School, Brunel University, Kingston Lane, Uxbridge, UB8 3PH, UK <sup>1</sup>Newcastle University  
London, 102 Middlesex Street, London, E1 7EZ, UK  
Corresponding author email: suraksha.gupta@newcastle.ac.uk

Many films are produced annually, but only a small number of films reach the state of being considered and identified by consumers as film brands. Film-brand identification is difficult to achieve, but it leads to engagement behaviours (e.g. repetitive viewing, positive word-of-mouth and purchase intention of relevant merchandise/franchise). To help film-makers better develop films as brands and benefit from their brand status, this paper takes a consumer-centric approach to investigate how and why films are identified and engaged by consumers as brands. Using an abductive mode of reasoning, a consumer film-brand engagement framework was developed through qualitative data collected from 35 semi-structured interviews and then validated using survey data with 1030 participants. This consumer film-brand engagement framework shows that film identity coherency drives film-brand identification through the mediation effects of popularity, sequels and emotional bonding, whilst marketing effort, iconic status, franchising/merchandising activities and timelessness are highlighted as key moderators, resulting in positive brand engagement behaviour. The paper sheds new light on film-branding literature by theoretically explaining and empirically showing a sequential and consolidated process, which consumers go through to identify and engage with films as brands, leading to several managerial and marketing implications for film-makers.

## Introduction

The film sector is lucrative – in 2017, film market revenues exceeded £3.4 billion in the UK alone (British Film Institute, 2018). Nevertheless, the market is saturated and competitive (Gong, van der Stede and Young, 2011). Although many films are developed by film-makers as brands through a formula combination of various brand elements that consumers find appealing (Keller, 2008), most films are merely consumed as films, failing to be identified or engaged by consumers as brands.

Film-brand identification refers to the state/condition in which a consumer considers a film as a brand, characterized by a consumer's recognition of a brand's symbolic meanings and the brand's ability to express and enhance a consumer's identity (Kim, Han and Park, 2001). It leads to posi-

tive brand engagement behaviours, such as brand loyalty (Kim, Han and Park, 2001), increased buying intention (Ahearne, Bhattacharya and Gruen, 2005) and positive word-of-mouth (Tuškej, Golob and Podnar, 2013), all of which are likely to contribute towards favourable box office results and downstream revenues (Young *et al.*, 2008).

Whilst the benefits of developing not only films but also film-brands are acknowledged, film branding is still a relatively new and under-developed field. Existing literature is predominantly conceptual and tends to discuss producing films as brands from filmmakers' and marketers' perspectives. For example, using production house logos, product placements and industry politics in developing branded texts (Grainge, 2007), employing culturally embedded brand entities within a film project into a brandscape (O'Reilly and

Kerrigan, 2013) and increasing a film's marketability and playability that may affect consumers' film consumption journey (Gillespie, 2005; Hart, Kerrigan and vom Lehn, 2016; Kerrigan, 2010).

These studies overlook the fact that a brand's reality lies in the experience of its consumers (Topalian, 2003), consumers' brand identification (Tuškej, Golob and Podnar, 2013) and consumers' brand engagement (Gambetti, Graffigna and Biraghi, 2012). This purely managerial perspective on branding fails to help film-makers resolve their struggles in developing films that are identified and engaged by consumers as brands. Subsequently they lose out on user-generated word-of-mouth, repetitive viewing from fans, selling various merchandise goods and franchise opportunities and generating a dedicated fan base that follows and grows with the film brand over time.

To address this knowledge gap, this paper makes an initial attempt to explore how and why consumers would identify and engage with certain films as brands, rather than just consuming them as films. Taking on a consumer-centric approach to branding (Maney, Flink and Lietz, 2002; Wright, Stone and Abbott, 2002), two research objectives were identified: (1) to explore how and why consumers would identify certain films as brands, leading to the development of a conceptual framework (study 1); (2) to develop and validate a consumer film-brand engagement framework that elucidates the antecedents, outcomes and facilitators (e.g. mediators, moderators) of film-brand identification through a sequential process, illustrating how consumers engage with a film as a brand (study 2).

This paper adopts a mixed-methods approach in order to gain a more elaborate understanding of the research problem, to triangulate the data sets so that they inform and clarify each other (Tashakkori and Teddlie, 1998) and extend the breadth and range of enquiry to accomplish the research objectives. Adopting an abductive mode of reasoning, it started with a qualitative study of 35 semi-structured interviews (study 1), followed by a quantitative survey of 1030 participants (study 2), to address the two research objectives.

By conceptually developing and empirically validating a novel consumer film-brand engagement framework, this paper contributes to film-branding literature in several ways. In particular, by illustrating how consumers would engage with

films as brands in a sequential process through identity coherency and film-brand identification to film-brand engagement, this paper explains how some films could be identified as brands and are being engaged by consumers as such, illuminating the consumer-centric route to film branding. Furthermore, by showing a film's popularity, sequels and emotional bond with consumers as mediators between film identity coherency and film-brand identification, and proving the moderating effects of marketing efforts, timelessness, iconic status and franchise/merchandise, it highlights all the concepts that are relevant in consumers' engagement with films as brands. For film-makers and film marketers, this paper also provides effective brand engagement strategies in which consumers actively participate.

## Literature review

### *Film consumption journey and film branding*

Consumers' film consumption journey can be classified into three stages: before, during and after viewing. Before committing to viewing a film, consumers' choice is dictated by a film's marketability and playability, communicated by the film's marketing efforts (Kerrigan, 2010; O'Reilly and Kerrigan, 2013). A marketable film has a unique selling point (in terms of differentiation), for example, an appealing combination of cast and crew, which enables the film to be promoted in a compelling manner (Kerrigan, 2010). Marketability could be influenced by the prominence of an actor's role (Albert, 1998) and a film's genre (Eliashberg, Hui and Zhang, 2014), age rating (Leenders and Eliashberg, 2011) and release window (Young *et al.*, 2008). Marketability has a direct impact on a film's box office performance (Kerrigan, 2010). Consumers may consider a film's review (Hennig-Thurau, Marchand and Hiller, 2012), awards (Addis and Holbrook, 2010) and recommendations from their reference groups (Hennig-Thurau, Wiertz and Feldhaus, 2014) when evaluating a film's playability.

Recent research suggests that consumers' perception, selection and evaluation of films involves a nuanced process (Hart, Kerrigan and vom Lehn, 2016). Consumers may subjectively classify films based on their anticipated film experience, to screen out irrelevant 'noise', going beyond simplistic marketability and playability factors.

Cooper-Martin (1991) found that consumers consider abstract global features of a film (e.g. awe-inspiring, moving, thoughtful, etc.), which refer to the entire 'product' rather than specific aspects. Hart, Kerrigan and vom Lehn (2016) found consumers' classification of a film to be based on a film's characteristics, the viewing environment, the time of the day, season, etc. Consumers consider these interrelated dimensions holistically and on a cumulative basis, simultaneously earning 'cultural capital', whilst retrospectively informing their future film selection (Hart, Kerrigan and vom Lehn, 2016). Nonetheless, when consumers struggle to comprehend what a specific film is about, they may become confused as to how to classify it and whether ultimately to watch it or not, which may be due to an incoherent film identity (Zhao, Ishihara and Lounsbury, 2013).

During actual film consumption, consumers' personal engagement with a film's narrative enhances cognitive and emotional immersion into a film's imaginary world, which is a crucial requisite for consumers' repeated enjoyment of a film (Batat and Wohlfeil, 2009). Such high involvement is possible because films are experiential and hedonistic (Bassi, 2010; Schmitt, 1999), thus consumers' evaluations of films are highly linked to their end goals and values (Blythe, 1997). They consume films holistically, based on the potential value arising from each film (Bassi, 2010; Mano and Oliver, 1993). For consumers, films' values consist of personal and social/community-driven dimensions: films allow escapism from worldly affairs; they aid consumers' identity building; offer assistance during rites of passage; inspire, educate, spread enjoyment and bring people together, thus widening network clusters (British Film Institute, 2011).

After viewing a film, consumers may consider film-related purchases and follow the film's premise onto different platforms (e.g. TV serials, novels and video games), due to their familiarity and fascination with the storyline and characters, which encourage them to explore deeply other related facets (Marshall, 2002). Consumers may also 'partake' in the process of co-producing works of art, like short films, as part of a cooperative network (Becker, 1982), made possible through communal relationships with film-makers. Such relationships result in global, passionate, fan-based communities, which are often formally institutionalized by film marketers at some point, to actively

involve fans, thus amplifying a film's success and popularity (Muniz and O'Guinn, 2001). For example, May 4th is widely publicized as the official *Star Wars* day, on which consumers from all over the world reminisce about the franchise and indulge in cosplay events.

Figure 1 summarizes consumers' experiences of the key stages in their film consumption journey, wherein consumers continuously and actively decode films and their relevant materials and myths before, during and after their film consumption journey. As part of the audience reception theory (Hall, 1980), when decoding, consumers can deviate from meanings and positions encoded by film-makers, refusing these altogether or negotiating them, whilst interacting with media texts as social subjects. The concept of spectatorship (Mayne, 1993) also refers to how film consumption and its associated myths are considered to be culturally significant and activities of a symbolic nature for consumers, who are found to have agency over media texts such as films (Hayward, 2018).

Film branding is a relatively new area, despite the sheer size of the film market. The film-branding literature is relatively unexplored and largely conceptual. It tends to explore how films could be conceived as brands from the perspectives of studios and marketers, and how branded entities within a film individually contribute towards the view of a film as a brand (Grainge, 2007; Kapferer, 2008; Keller, 2008). O'Reilly and Kerrigan (2013) explain how the ambiguity about a film brand's ownership, such as who has the authority to speak about and promote it – in a multi-stakeholder scenario, is a hindrance to the development of film-brand theories.

Grainge (2007) labels film studios as corporate brands and details the internal film branding process via complex corporate structures. He also describes the commercialization of blockbuster franchises from the studios' and marketers' perspectives. Grainge (2007) is credited with exploring Hollywood's industry culture, the role of production house logos, product placements and industry politics in developing branded texts. Kapferer (2008) suggests that film brands cannot exist without a supporting product/service that embodies the brand, citing films made by Disney as successful examples. However, Keller (2008) argues that all films are brands at a basic level, and that some films can establish themselves as *strong* brands (e.g. *Batman*,

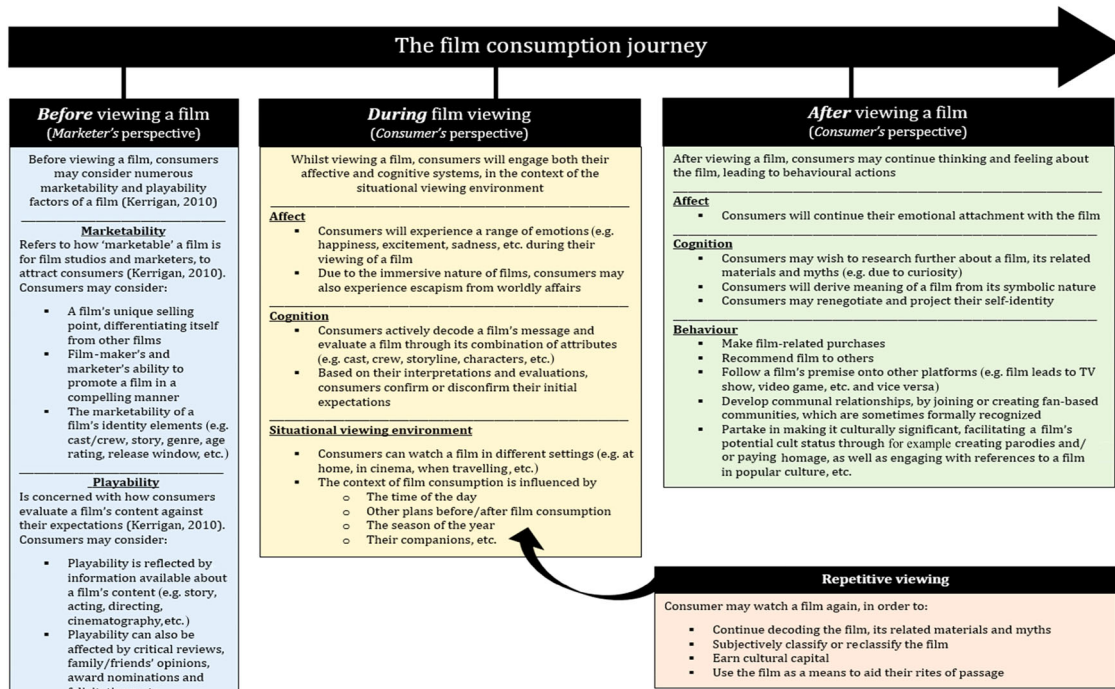


Figure 1. The film consumption journey [Colour figure can be viewed at [wileyonlinelibrary.com](http://wileyonlinelibrary.com)]

*Austin Powers* and *Harry Potter*) by combining various elements such as name, logo, symbol, brand characters, slogan, jingle, signage, etc. into a formula that consumers find appealing.

Rather than exploring how individual films could be branded, O'Reilly and Kerrigan (2013) investigate how branded entities within a film project are embedded within the broader cultural fabric, using the brandscape lens. Their conceptual framework is primarily applicable to mainstream, commercial films. Acknowledging consumers' contribution and involvement, O'Reilly and Kerrigan (2013) seek to explain how consumers understand individual brands in relation to one another, using an illustrative case study of the *James Bond* franchise. Preece, Kerrigan and O'Reilly (2018) apply the assemblage theory to explore the concept of brand longevity, focusing on consumers' engagement with serial brands over time. Again using the *James Bond* film brand, Preece, Kerrigan and O'Reilly (2018) explain how serial brands achieve longevity in evolving socio-cultural contexts, through social salience and ongoing consumer engagement to achieve brand longevity.

Overall, previous works predominately discuss films as brands from the perspective of film-makers

and marketers, based on a handful of successful film brands as examples or taking a macro-level cultural approach to film branding. They have not taken account of consumer identification or engagement in the discussion of films as brands, thus failing to account for consumers' emotional and cognitive factors in explaining their identification and engagement with only certain films as brands. This ignorance highlights the problem that not all films produced are identified or engaged by consumers as brands; instead many are merely consumed as films.

### Consumer-centric approach to branding

Brands can be developed and managed using different approaches: economic (Borden, 1964), identity (Kotler, 1997), consumer-based (Keller, 1993), personality (Aaker, 1997), relational (Fournier, 1998), community (Muniz and O'Guinn, 2001) and cultural (Holt, 2004; Kates, 2004). Hedging, Knudtzen and Bjerre (2008) offer a detailed account of the seven approaches, comparing their benefits and drawbacks in brand management. Derived from the consumer-based and relational approaches, the consumer-centric approach is

acknowledged by Maney, Flink and Lietz (2002) and Wright, Stone and Abbott (2002) to enable a micro-level focus on the consumer, in the context of a dyadic, one-to-one, consumer–brand relationship. It focuses on capturing and deploying consumer insights, in order to effectively market and better serve a brand's most promising prospects. This consumer-centric approach takes into account the consumer's cognitive and affective systems, without losing focus of the brand itself (Heding, Knudtzen and Bjerre, 2008), hence it is more versatile in applying to a variety of conceptual brand management tools (Grover, Halinski and Duxbury, 2016; Walsh *et al.*, 2009).

Consumer engagement advances research on the consumer–brand relationship, as it describes the intensity of consumer participation and connection with a focal agent/object/activity in the relationship (Brodie *et al.*, 2011; Vivek, Beatty and Morgan, 2012). Levels of engagement are determined by the consumer's overt behaviour (Kumar, 2013). In 2013, a Gallup study found that 'fully engaged' and 'engaged' customers lead to an increase of 23% and 7% in revenue; whilst groups of customers 'not engaged' and 'actively disengaged' accounted for falls in revenue of 1% and 13%, respectively (Kumar and Pansari, 2016). Consumer engagement is multi-dimensional, including: affect and attention (Brodie *et al.*, 2011); enthusiasm (Calder, Isaac and Malthouse, 2013); enjoyment (Mollen and Wilson, 2010); behaviour (Gummerus *et al.*, 2012); sharing (Van Doorn *et al.*, 2010); learning and endorsing (Dessart, Veloutsou and Morgan-Thomas, 2016); cognition (Brodie *et al.*, 2013); and absorption (Vivek, Beatty and Morgan, 2012). Nevertheless, the existing literature has not reached an agreement on the validity and reliability of consumer engagement's measurement scales; or on adopting multiple manifestations of engagement that stem beyond behavioural metrics (Dessart, Veloutsou and Morgan-Thomas, 2016). Hence, research is encouraged to discuss customer-focused engagement strategies, by focusing on understanding elements of consumer engagement from customers' perspectives (Vivek, Beatty and Morgan, 2012).

Engagement is inherently interactive and social (Dessart, Veloutsou and Morgan-Thomas, 2016); consumers' engagement varies in context – consumers may choose to engage with a variety of focal agent/object/activity concurrently but differ-

ently (Gambetti and Graffigna, 2010). Therefore, research is required to understand the complete process of consumer engagement in a specific context, including the associated antecedents and consequences (Pansari and Kumar, 2017), in order to develop better managed consumer–brand relationships.

This paper focuses on consumer–brand engagement, which refers to positive consumer–brand interactions, of a cognitive, emotional and behavioural nature (Hollebeek, Glynn and Brodie, 2014). Previous consumer–brand engagement studies discuss how brands are engaged cognitively by consumers as part of their self-concepts (Sprott, Czellar and Spangenberg, 2009), to what extent affective advertising components elicit consumer engagement through feelings (Heath, 2007, 2009) and behavioural manifestations of consumer–brand engagement beyond the initial purchase (Van Doorn *et al.*, 2010). Consumer involvement, consumer participation and brand expressiveness drive consumer–brand engagement (Hollebeek, Glynn and Brodie, 2014; Leckie, Nyadzayo and Johnson, 2016), whilst consumer–brand engagement leads to increasing usage intent, self-brand connection, brand loyalty and brand equity (Bowden, 2009; Hollebeek, Glynn and Brodie, 2014; Leckie, Nyadzayo and Johnson, 2016).

Besides consumer–brand engagement, consumer–brand identification also plays a key role in consumer–brand relationships. Conceptualized as the extent to which a brand is able to express and enhance a consumer's identity through its symbolic meanings, consumer brand identification refers to the state/condition when a brand is being acknowledged and recognized by the consumer for its brand status (Kim, Han and Park, 2001). The sense of congruent sameness often plays a dominating role in brand identification (Bhattacharya and Sen, 2003; Tildesley and Coote, 2009) because of the overlap between a consumer's self-schema and the schema they hold for a brand (Carlson, Suter and Brown, 2008). Value congruity (Bhattacharya and Sen, 2003), perceived quality, self-brand congruity and innate innovativeness (Lam *et al.*, 2013) drive consumer–brand identification, and lead to outcomes such as positive word-of-mouth and brand commitment (Tuškej, Golob and Podnar, 2013), brand preference (Tildesley and Coote, 2009) and brand loyalty (Kim, Han and Park, 2001). Nevertheless, existing

Table 1. Overview of key concepts

Concept	Key work	Key definitions	Theoretical contributions	Theoretical limitations
Film identity	Kerrigan (2010)	The key elements that constitute a film's identity include: the star (actor/non-actor), the script/genre, age classification and release strategy	Kerrigan's work is credited with operationalizing the film identity construct, with its key dimensions	- Kerrigan's (2010) work on film identity is conceptual and not empirically tested
Film brand	Grainge (2007)	Implies that films are branded through complex corporate structures, involving the commercialization of blockbuster franchises, from the studio's/marketer's perspectives	Grainge's work is credited with highlighting that branded texts such as films are developed via Hollywood's industry culture/politics, production house logos, product placements and that branding serves as a means of adding value and identity to a film as a commodity	- Grainge does not specify exactly what a film brand is and how it is conceptualized - His work has also been criticized for underplaying the role of the consumer in the film-branding process - His work is also conceptual and has not been empirically tested
	Keller (2008)	All films are brands once they are produced, from the marketer's perspective. Some film brands are stronger because they combine various branding elements (e.g. name, logo, signage, symbols, etc.) into a formula that consumers find appealing	Keller's work is credited with acknowledging that films can exist as brands of varying strength and specifying some of a film brand's key brand elements	- Keller does not state how exactly a film brand's various brand elements could be combined into a successful formula to appeal to consumers - He also assumes that all films will engage with consumers as brands, even though films are hedonic experiential goods, and some may therefore inherently just be consumed as mere films - His work is also conceptual and has not been empirically tested
	Kapferer (2008)	Film brands cannot exist without a supporting product/service that embodies the brand	Kapferer is credited with emphasizing the importance of a brand's tangibility, in order for consumers to better realize a brand's existence, from the marketer's perspective	- Kapferer has not taken into account a brand's increasingly intrinsic intangible values - His work is also conceptual and has not been empirically tested
	O'Reilly and Kerrigan (2013)	There are several branded entities within a film project (e.g. studio brand, character brand). These are embedded within the broader cultural fabric, using the brandscape lens, contributing towards the view of a film as a brand	They have credited the consumers' role in the film-branding process by acknowledging them as co-creators of meaning as part of the brandscape	- Their work is conceptual and has not been empirically tested - They have failed to consider that films are consumed holistically and that consumers do not consider the sum of a film's attributes but the potential value arising from their combination

(Continued)

Table 1. Continued

Concept	Key work	Key definitions	Theoretical contributions	Theoretical limitations
Consumer engagement	Vivek, Beatty and Morgan (2012)	Consumer engagement refers to an individual's intensity of participation in and with an organization's activities/offerings, initiated by either party involved	Their study is credited with identifying participation and involvement as consumer engagement's antecedents; also – value, trust, affective commitment, word-of-mouth, loyalty and brand community involvement as consequences	<ul style="list-style-type: none"> <li>- The branded entities identified in their paper are arguably more reminiscent of a film brand's identity, as opposed to how consumers engage with a film as a brand</li> <li>- Their snowball sampling approach for the first study and convenience sampling approach for the second study (consisting of solely university students) has restricted the extent to which their findings can be generalized</li> </ul>
	Bowden (2009)	Engagement is a psychological process, explaining the mechanisms by which a new customer forms loyalty, and loyalty may be retained for repeat purchase customers of a service brand	Bowden's study is credited with distinguishing between new and returning customers, in order to facilitate a deeper and more complete understanding via segmenting consumer-brand relationships	<ul style="list-style-type: none"> <li>- Bowden's work is conceptual and has not been empirically tested</li> </ul>
	Van Doorn <i>et al.</i> (2010)	Customer engagement behaviour is a behavioural manifestation beyond purchase, towards a brand/firm via motivational drivers	Their work is credited with conceptualizing the foundations of customer engagement behaviour, including its antecedents and consequences	<ul style="list-style-type: none"> <li>- Van Doorn <i>et al.</i>'s (2010) work is conceptual and has not been empirically tested</li> </ul>
Consumer brand identification	Kim, Han and Park (2001)	Consumer brand identification refers to the degree by which a brand is able to both express and enhance a consumer's identity	Using the theory of social identification, the study is credited with highlighting the positive direct effect of consumer brand identification on positive word-of-mouth, and positive indirect effect on brand loyalty	<ul style="list-style-type: none"> <li>- The study only focuses on one product category – cellular phones</li> <li>- Their sample size was relatively small (130) and only consisted of university students, restricting the extent to which their findings can be generalized</li> </ul>
	Carlson, Suter and Brown (2008)	Consumer's 'personal' brand identification is about how much an individual's self-schema overlaps the schema they hold for a specific brand	Their study highlights the significant effect of an individual's identification of a brand as a determinant of psychological brand communities, in the context of online brand communities in which individuals have no known connections	<ul style="list-style-type: none"> <li>- The study only examined one service-orientated firm in a single industry</li> </ul>

(Continued)

Table 1. Continued

Concept	Key work	Key definitions	Theoretical contributions	Theoretical limitations
	Tuskej, Golob and Podnar (2013)	Consumer brand identification denotes a consumer's sense of sameness with a specific brand's symbolic meanings	The study empirically validates the significance of a consumer's identification as a mediator between the impact of value congruity on forming committed brand relationships that are meaningful, as part of a psychological process	<ul style="list-style-type: none"> <li>- Their non-probability snowball sampling approach suggests that individuals with larger personal networks are oversampled and that their findings cannot be generalized</li> <li>- Their study only took into account consumers' brand identification processes with their favourite brands and increasing item means and correlations between them, thus perceived oneness with the brand is more likely in the first place</li> </ul>
Consumer brand engagement	Hollebeck, Glynn and Brodie (2014)	Consumer brand engagement refers to a consumer's positive brand-related activities (of cognitive, emotional and behavioural nature) during focal consumer-brand interactions	Study is credited with identifying three consumer-brand engagement dimensions (cognitive processing, affection and activation). The study has also empirically validated consumer-brand 'involvement' as an antecedent and 'brand usage intent' as well as 'self-brand connection' as consumer-brand engagement's consequences	<ul style="list-style-type: none"> <li>- The study is cross-sectional and therefore only provides a snapshot of consumers' engagement with a brand at a specific moment in time</li> </ul>
	Graffigna and Gambetti (2015)	Consumer-brand engagement is a dynamic process with progressive relational phases in which consumers perceive a brand to be engaging when it is emotionally lived as a 'life-mate'	Using a grounded theory approach, their study is credited with identifying distinctive characteristics and phases of consumer-brand engagement, which are: friendship, intimacy and symbiosis	<ul style="list-style-type: none"> <li>- Since the study took on a qualitative approach, their relatively small sample size has restricted the generalization of findings</li> <li>- Their conceptual framework has not been empirically validated</li> <li>- The study focused on the participants' favourite product brands, hence it is not clear if their conceptual framework is applicable to other brand categories and types of brand, as well as brands which consumers have varying levels of admiration for</li> </ul>

(Continued)



Table 1. Continued

Concept	Key work	Key definitions	Theoretical contributions	Theoretical limitations
	Leckie, Nyadzayo and Johnson (2016)	Have adopted Hollebeek, Glynn and Brodie's (2014) definition	The study has identified 'consumer involvement', 'consumer participation' and 'self-expressive brand' (inner self) as antecedents and brand loyalty as a consequence of consumer-brand engagement	- The study is cross-sectional and therefore only provides a snapshot of consumers' engagement with specific mobile phone service provider brands

consumer-brand identification literature is often restricted by the contextual scope of its findings (e.g. focusing on a specific firm in an industry or a particular product category). Some studies also struggle to distinguish between mere involvement and actual identification, by only investigating the participants' views on their favoured brands (Tuškej, Golob and Podnar, 2013). Table 1 summarizes the key concepts.

## Methodology

To address the research question regarding how and why consumers would identify and engage with certain films as brands, rather than just consuming them as films, this paper takes on a mixed-methods approach using two studies and employs abductive reasoning to explore the relationship between theory and data. Table 2 describes the methodology in detail.

### Study one

To explore why and how consumers only engage with certain films, but not all films as brands, 35 face-to-face semi-structured interviews were conducted in 2014 (see Appendix A in the online Supporting Information). The purposive sampling method was employed – only those consumers who self-classified themselves as active film viewers were invited, because participants' willingness to share their consumption experiences is crucial for collecting relevant information (Cappellini and Yen, 2013). Participants were recruited in the West London area, via posters on notice boards, social media platforms and the researchers' personal contacts, whilst also taking on a snowball approach (McDaniel and Gates, 2009).

Interviews were conducted over 4 months, ranging between 25 and 91 minutes, concluding when the data were found to have become saturated (Strauss and Corbin, 1998), specifically when participants discussed known themes, thus indicating that key dimensions, sub-dimensions and relationships identified amongst them were representative of the phenomenon's totality. Prior to interviewing, participants were given an information sheet, outlining the study's purpose, procedure involved (permission to record audio for transcribing), researchers' contact details, reassurance of feedback anonymity, data confidentiality and their rights and voluntary participation (Collis and Hussey, 2014). Please see the list of guideline questions in Table 3.

All the interviews were audio recorded and transcribed. Initial themes within the findings were then gathered using thematic analysis (Spiggle, 1994), thus categorizing the data in a manner that is relevant to the research focus and to aid theoretical understanding (Bryman and Bell, 2015). Core or more abstract themes which have emerged, such as 'emotional bonding' and 'popularity' and sub-themes, such as 'self-congruity' and 'emotional attachment' (which contribute towards encapsulating the core themes) were highlighted for coding purposes in NVivo (see Appendix B in the online Supporting Information for how these were discovered).

*Study one findings.* Table 4 shows the 11 key concepts that emerged from the interview findings, their definitions and an exemplar quote for each. The following discusses how the 11 constructs are connected, starting from a film identity's coherency to film-brand identification, through possible mediators and moderators, leading to four favourable engagement behaviour outcomes.

Table 2. Our research design and methods

<b>Mixed-method approach</b>	This paper adopts a mixed-method approach, rather than a multi-method approach (Creswell and Plano Clark, 2011), by incorporating a combination of methods from different research paradigms (qualitative and quantitative). In doing so, the researchers are able to: (1) extend the breadth and range of enquiry; (2) use the results of Study one (qualitative) to inform and develop Study two (quantitative) – for example, possible cause/effect via hypothesis development and measurement decisions; (3) further clarify and validate the results of Study one in Study 2; (4) utilize the strengths of one method to offset the weaknesses of another (Greene, Caracelli and Graham, 1989; Tashakkori and Teddlie, 1998). Furthermore, a mixed-method approach also enables methodological triangulation, whereby measurement, sampling and procedural bias are minimized, providing the results complement each other (Denzin, 1989).
<b>Abductive mode of reasoning</b>	This paper adopts an abductive mode of reasoning, rather than a deductive or inductive approach. The most common issue associated with deduction is the notion that the process strictly relies on the logic of theory and hypothesis testing, with difficulties arising as to which theory to select for testing (Bryman and Bell, 2015; Mantere and Ketokivi, 2013; Wilson, 2006). On the contrary, inductive reasoning is notorious for its inability to enable the development of theory, regardless of the size and depth of empirical data (Creswell and Plano Clark, 2011). Abductive reasoning is pragmatic, as it requires researchers to make logical inferences and build theories about the world (Bryman and Bell, 2015). It enables us to unravel the puzzling mystery as to why not all films produced by film-makers with the intention of being branded are engaged by consumers as brands. Also, it explains how some films acquire brand status without an initial intent by their producers to do so. This involves identifying conditions that would make the phenomenon less puzzling and therefore ‘easier’ or more logical to comprehend, thus pinpointing the ‘best’ explanation plausible to interpret the phenomenon (Mantere and Ketokivi, 2013).
<b>Research context</b>	The UK was chosen as the research setting because it is the world’s fourth largest film market, with film revenues reaching £3.4 billion in 2017 and with more than 5 billion film viewings annually across various platforms (British Film Institute, 2018).
<b>Study one</b>	Using semi-structured interviews, Study one addresses objective one, which is to explore how and why consumers would identify certain films as brands. The findings derived from the qualitative interview data led to the development of our conceptual framework using an interpretivist orthodoxy. From an ontological perspective, a constructionist position was deemed suitable for Study one. Relating to the concept of postmodernism, constructionism assumes that meanings constructed during social interaction are ephemeral (Bryman and Bell, 2015), since they are dependent on both time and place, as is also evident in discourse analysis (Potter, 1996). Since films have now been releasing for more than a century and across the world, and the perception of a film as a brand can essentially be considered subjective in nature, the purpose of this study is not to determine which film is a film and which film is a film brand, but to better understand how consumers identify and engage with films as brands and which factors are fundamental to comprehend how the consumer film-brand engagement process functions effectively. We took part in a process known as ‘dialectical shuttling’, which involves engaging forwards and backwards with the social world, the literature and the empirical data (Atkinson, Coffey and Delamont, 2003; Schwartz-Shea and Yanow, 2012). Thus, in the process of developing this consumer film-brand engagement framework (Study one) and finalizing it through quantitative validation (Study two), we remain open to the idea of being ‘surprised’ by data, and not being confined by confirming previous understandings of how consumers engage with a film as a brand (Bryman and Bell, 2015).
<b>Study two</b>	Study two addresses objective two, which is to validate the consumer film-brand engagement framework that elucidates the antecedents, outcomes and facilitators (e.g. mediators, moderators) of film-brand identification through a sequential process, illustrating how consumers engage with a film as a brand, using quantitative data collected through a questionnaire survey. A consumer survey questionnaire was deemed appropriate as a deductive, conclusive and confirmatory means to measure how widespread are the quantifiable attitudes, motivations and behaviours identified in the preliminary Study one (Brace, 2013; Wilson, 2006).

*Film identity coherency.* A coherent film identity was regarded as the starting point by participants in the film-brand engagement journey. It refers to a film identity’s elements, including actors, characters, storyline, *mise-en-scene*, production house, etc. and collectively, how meaningful these are to the consumers. The findings indicate that

film identity coherency helps participants experience a film more deeply, interpret it with more meaning, perceive it as more popular/successful and bond affectively due to more simplified comprehension. This echoes previous works that when consumers perceive a film’s identity to be coherent (Cooper-Martin, 1991), they are also less likely to

Table 3. Interviewer's guideline questions

Section	List of questions
Intro questions	<ul style="list-style-type: none"> <li>• 'How often do you watch movies?'</li> <li>• 'What medium do you use?'</li> <li>• 'Why do you watch movies?'</li> </ul>
Transition questions	<ul style="list-style-type: none"> <li>• 'Which movies do you love? What is your favourite one?'</li> <li>• 'How do you typically make up your mind about what movie to watch next? What persuades you to watch a film?'</li> <li>• 'What do you do after watching a film?'</li> <li>• 'Are there any particular individuals/characters from the film world that you love?'</li> </ul>
Core questions	<ul style="list-style-type: none"> <li>• 'What comes to your mind when you hear the words film brand?'</li> <li>• 'Do you think a film can become a brand?'</li> <li>• 'Can you describe what a film brand is?'</li> <li>• 'Can every film be a brand? What is fundamental for a film to be a brand?'</li> <li>• 'Does a film require a sequel to be a brand?'</li> </ul>
Closing comments	<ul style="list-style-type: none"> <li>• 'Are there any film brands that you really love?'</li> <li>• 'What sets your choice apart from others?'</li> <li>• 'Are your friends/family aware that you love these?'</li> <li>• 'Let me summarize our major discussion today, do you agree with these points?'</li> </ul>

experience 'category confusion' (Zhao, Ishihara and Lounsbury, 2013), thus simplifying their subjective classification of films and interpretation of the meaning of the films (Hart, Kerrigan and vom Lehn, 2016) and engaging with the film as a brand (Kapferer, 2012).

Contrary to O'Reilly and Kerrigan (2013), our findings show that elements such as actors, directors, production houses, etc. don't necessarily dictate a film's brand status, but instead collectively constitute a film's identity. This is because experiential goods are not simply considered as the sum of their attributes; instead, consumers value the potential arising from their combination holistically (Bassi, 2010). For instance:

Strong, memorable characters, storylines, the look and the feel all adding together... films like *Indiana Jones* have a clear and consistent landscape... always an adventurous plot, you just know what to expect... A film brand is something that has a very strong and clear identity; it is able to stand out. [Participant 30]

**Popularity.** When asked why certain films are regarded as brands, popularity, fan-based community, sequels and emotional bonding were identified as agents that help translate film identity coherency into subsequent film-brand identification. In particular, participants referred to the level of awareness a film gathers within their social/professional circles as popularity (e.g. how fre-

quently a film is discussed, how widespread knowledge is about a film's storyline/characters, etc.). Interestingly, participants also expressed that a film's popularity is not necessarily dictated by a film's box office results but how it is felt subjectively (Bassi, 2010), and this sense of a film as popular helps them further identify it as a brand. For example:

*Titanic* is a film brand because people talk about it, it's word-of-mouth... if it's a big discussion in society, if it's been referred to in the news, in society in general, if people keep referring to a film and comparing it, they are keeping it alive... basically to keep it circulated within society, it almost becomes like common knowledge, you expect people to know about the film. [Participant 24]

Based on the findings, we propose:

**H1a:** Popularity mediates the effect film identity coherency has on consumer's film-brand identification.

**Fan-based communities.** Participants also agreed that fan-based communities help promote films as brands, as fan-based communities promote a collective sense of belonging that facilitates their pro-activeness in identifying and engaging with films as brands, as part of something bigger. This process of communal relationship amongst consumers, film-makers and fellow viewers (Batson, Clark and Mills, 1993) explains why sometimes,

Table 4. Key concepts emerging from Study one

Construct	Definition	Exemplar quotes
Film identity coherency	Derived from Kerrigan's (2010) work on film identity, film identity coherency refers to how a film communicates its identity cues in a clear and careful manner to ensure all features are coherently considered, so that they complement each other aesthetically and meaningfully	'... Costumes, sceneries, settings and cinematography can all contribute via <i>mise-en-scene</i> . <i>Star Wars</i> for example, its costumes, light-sabres and music together create an identity that stands out' [Participant 31]
Marketing efforts	All the [post-production] marketing activities that assist a film in reaching its target audience, during its lifetime (Kerrigan, 2010)	' <i>Star Wars 7</i> is coming soon. There are so many trailers to watch on YouTube, it's giving people the impression as if something big, exciting and grand is coming over this winter. It reminds me how I felt when I first saw the billboard of Anakin as a child facing the desert, with the title of destiny next to it. I still get goose bumps when I think of it. I can't wait!' [Participant 35]
Popularity	The extent a film can be recognized amongst others and how effortlessly it can be recalled (Kerrigan, 2010)	'The film should have popularity, otherwise how will it become a brand? There's no brand without a fan who follows them or buys their stuff, otherwise it won't be a brand, even if we call this a brand and this a brand, if no one is attracted to it, it will disappear within just I don't know a few months or year' [Participant 10]
Fan-based community	Avid fans of a particular well-known person, group, team, film, etc. that are part of a distinct and often institutionalized social grouping (Muniz and O'Guinn, 2001)	'A film brand, for example, <i>Hunger Games</i> . I think lots of people liked it, they have a fan-base, now they have a second part... <i>Twilight</i> , they have really passionate and a lot of fans, that's why they have part two, part three, I think their box office collection within their first week was \$100 million, must be contributed by their fans. There are movies like now I've heard, the <i>Counsellor</i> , it didn't do that well, it probably doesn't have a strong fan-base' [Participant 10]
Sequels	A film's story that either precedes (prequel), succeeds (sequel) and/or is a by-product (spinoff) of an existing work (Preece, Kerrigan and O'Reilly, 2018)	' <i>Toy Story</i> is a brand, it has several films, there are spin offs from it!' [Participant 28]
Iconic status	A symbol representative of or synonymous with something (e.g. an era in time, ideology, person, etc.) (Holt, 2002)	'One of a kind, a new variant of a kind, so the first Spaghetti Westerns were iconic, nobody had ever seen anything like them before, and you'd wanna see the next one, and the next one, and the next one, and so it became a brand. The first of the Spaghetti Westerns was amazing, the first time I saw it, it was very bleak, every time I see it again, I see the comedy in it, it becomes funnier and funnier, but yeah, in order for a film to become a brand, I think it has to be iconic, to earn its brand status' [Participant 29]
Emotional bonding	The feelings consumers have towards a particular film, on an affective level (Heath, 2009). Self-congruence and emotional attachment with a film's characters were regarded as facets of emotional bonding (Bagozzi, Batra and Ahuvia, 2014)	'I've watched the <i>Local Hero</i> so many times, I think it's a film brand, I've got it on CD now, I used to have it on tape in the old days and then I got it on CD. I play the music quite a lot, I've told my children they can play it at my funeral that's how much I love it! [Laughing], it's really uplifting and the music so closely matches to the story, it's fantastic!' [Participant 29]
Franchise/merchandise	A film concept's degree of elasticity and ability to branch out to other media platforms and product/service categories through licensing (Grainge, 2007)	' <i>Frozen</i> is 100% a brand, because when you go shopping, all you see is <i>Frozen</i> . <i>Frozen</i> kitchen towels, lunchboxes, chocolates, books, <i>Frozen</i> everything! All the merchandise makes me see it as a brand' [Participant 33]

(Continued)

Table 4. Continued

Construct	Definition	Exemplar quotes
Timelessness	When a film is not affected by the passage of time or changes in fashion/trends	' <i>Star Wars</i> has become a strong brand over time; its appeal has endured for over 30 years to widespread audiences, the young and the old, that means the passion and enthusiasm for these movies can be passed between generations. Many people, including myself, were introduced to the <i>Star Wars</i> universe by members of the previous generation ...' [Participant 16]
Film-brand identification	The state/condition in which a consumer considers a film as a brand, characterized by a consumer's recognition of a brand's symbolic meanings and the brand's ability to express and enhance a consumer's identity (Kim, Han and Park, 2001)	' <i>Toy Story</i> is a film brand to me, I remember <i>Toy Story I</i> came out when I was very young, so I would have watched it then and then if you look at the final one, <i>Toy Story 3</i> , the kid goes off to university and that's when I was going off to university as well, so it's kind of like I was already attached to that, I already kind of knew them and it was kind of about my life, so I think if you need to catch the audience at the right time, and catch them young' [Participant 33]
Engagement behaviour 1: word-of-mouth	The behavioural act of making positive statements, recommendations about products/films	' <i>Lord of the Rings</i> is a brand! I'm always surrounded by posters of <i>Lord of the Rings</i> . If you look at my desk, I've got all the Lego <i>Lord of the Rings</i> lying around. It's pretty obvious what I like. I'm really passionate about <i>Lord of the Rings</i> . I even do talks at my kids' school about it' [Participant 28]
Engagement behaviour 2: purchase intention	When a consumer is willing to make brand-related purchases in the future	'I still haven't got my Obi-Wan dressing gown for Christmas yet, which I ask for every year, still haven't got it [laughing] ... I am hoping I will get it this year' [Participant 28]
Engagement behaviour 3: repetitive viewing	Like a ritual, viewing the same film again and again (Hart, Kerrigan and vom Lehn, 2016)	'... I have watched the <i>Captain America</i> films many times before because they don't lose their charm or sense of adventure even if you know what's going to happen ... <i>Captain America</i> is my film brand ... If anything, sometimes the more I watch them the better they get!' [Participant 16]
Engagement behaviour 4: following the brand	Keeping up with the releases and activities of a brand, not just confined to motion pictures	'I guess for me <i>Harry Potter</i> was like my generation. I grew up reading the books, grew up waiting for the films to come out and you know going and buying the books when they were released to read, going and buying the films as soon as they came out. It was quite magical, I've read all of the books and seen all of the movies' [Participant 15]

fan-based communities are formally institutionalized by film marketers (Muniz and O'Guinn, 2001). Our findings show that fan-based communities are recognized for their contribution towards how widely accepted a film becomes in society, whilst community members' projection of passion for films acts as a seal of approval for a film's stature as a brand:

*Twilight*, they have a lot of really passionate fans, who passionately promote the film! That's why they are film brands. [Participant 10]

Based on the findings, we propose:

*H1b*: Fan-based community mediates the effect film identity coherency has on consumer's film-brand identification.

*Sequels*. Sequels are also identified as a key mediator because sequels help explain and elaborate a film's identity further and deeper to participants, thus increasing the likelihood that they identify the film as a brand. Our findings extend Preece, Kerrigan and O'Reilly's (2018) work on serial brands, revealing how a film's sequels contribute towards its brand status, rather than brand longevity. For example:

*Star Wars* – the storyline of the original trilogy is wide enough and rich enough to allow prequels, sequels and origin stories to be made... This makes it almost immortal because you can have a factory that churns out movies on a regular basis that are based on the events of the original trilogy. It keeps the brand alive and fresh. [Participant 16]

Based on the findings, we propose:

*H1c:* Sequels mediate the effect film identity coherency has on consumer's film-brand identification.

*Emotional bonding.* During the interviews, participants conveyed strong emotions for some films they identified and engaged with as brands, which were triggered by profound thoughts and deep exploration of a film's various elements. Participants expressed their emotional attachment and passion for selected characters/stories they relate to and admire and the meanings these hold in their lives. For example:

For me, Disney films are definitely brands... I think *Lion King* has strong moral values... they teach kids good lessons, which is good to be reminded of every now and then. [Participant 14]

Our findings echo Graffigna and Gambetti (2015), showing that consumers' emotional bonding can contribute as a predictor to consumer-brand engagement due to films' hedonic, high-involvement nature, and their ability to integrate viewers' intellectual and emotional spheres (Bassi, 2010). Therefore we propose that besides having a coherent identity that assists consumers' desires for protagonism and self-achievement (Gambetti, Graffigna and Biraghi, 2012), when a film manages to build a deep, intimate, authentic, emotional and friendship-like relationship with consumers (Graffigna and Gambetti, 2015), the film is more likely to be identified as a film brand. Thus, we propose:

*H1d:* Emotional bonding mediates the effect film identity coherency has on consumer's film-brand identification.

*Marketing efforts.* The findings also highlight four possible moderators: marketing efforts, timelessness, franchise/merchandise and iconic status; these may intensify participants' identification and engagement with films as brands. From the marketers' perspective, brands are to a large extent established through investments in media cul-

ture, advertising/promotional campaigns, product placements, sponsorship and co-branding initiatives (Janson, 2002; Kellner, 1995) to enhance their marketability (Kerrigan, 2010). Such marketing efforts are not unnoticed – they are acknowledged by participants in the form of trailers, posters, promotional events, advertising campaigns, etc. pre- and post-launch and are appreciated as a means to assist participants' identification and engagement with films as brands. For example:

*Star Wars 7* is coming soon. There are so many trailers to watch on YouTube, it's giving people the impression as if something big, exciting and grand is coming over this winter... fans are all talking and speculating about it... It reminds me how I felt when I first saw the billboard of Anakin as a child facing the desert, with the title of destiny next to it. I still get goose bumps when I think of it. I can't wait! [Participant 35]

The findings show that when a film is supported with more marketing efforts, the relationships from film identity coherency to popularity, sequels, fan community and emotional bonding are likely to be strengthened. This is because a film's marketing effort could further promote the film's identity coherency, thus increasing its prominence (Kerrigan, 2010) and effect on perceived popularity, film sequels, fan community events and emotional bonding. Therefore, the following are proposed:

*H2a:* Marketing efforts moderate the effect of film identity coherency on popularity.

*H2b:* Marketing efforts moderate the effect of film identity coherency on fan-based community.

*H2c:* Marketing efforts moderate the effect of film identity coherency on sequels.

*H2d:* Marketing efforts moderate the effect film identity coherency has on emotional bonding.

*Merchandise/franchise.* The findings show that merchandise and franchise availability act as suggestive cues for the film's popularity and brand status, especially for films that participants are less attached to or haven't seen. This may be because merchandising goods' tangibility acts a token of the film; an embodiment that consumers can physically touch, feel and interact with (Kapferer, 2008). For example:

*Frozen* is 100% a brand, because when you go shopping, all you see is *Frozen*. *Frozen* kitchen towels, lunchboxes, chocolates, books, *Frozen* everything! It

is clearly very popular. All the merchandise makes me see it as a brand. [Participant 33]

The findings extend previous works (Gambetti, Graffigna and Biraghi, 2012; Kapferer, 2008), showing that a brand cannot exist for consumers without a supporting product/service embodying the brand, thus placing the brand into reality and acting as a brand evaluation source. Whilst franchise and merchandise provide brands with firm reference points, to be embedded and consumed in consumers' daily lives, we argue that franchise/merchandise availability strengthens the impact of perceived popularity on subsequent consumers' film-brand identification, leading to the development of:

**H3:** Franchise/merchandise moderate the effect popularity has on consumer's film-brand identification.

**Timelessness.** During the interviews, participants alluded to how a film may evolve into a film brand over time, rather than circulating momentarily and fading away. For instance, this may be achieved when a film reinforces its popularity status by continuously circulating within society and therefore staying 'alive', by being passed on through generations, etc. Participant 16 recalled:

*Star Wars* has become a strong brand over time; its appeal has endured for over 30 years to widespread audiences, the young and the old, that means the passion and enthusiasm for these movies can be passed between generations. Many people, including myself, were introduced to the *Star Wars* universe by members of the previous generation... it is timeless. [Participant 16]

Participants suggested that when a popular film becomes timeless, it would not be affected by the passage of time and/or changes in taste, fashion or trends. Instead, the meanings associated with a film would change over time and in accordance with their life stages (British Film Institute, 2011). The finding echoes the work of Preece, Kerrigan and O'Reilly (2018) on the 55-year-old *James Bond* serial brand, which has stayed relevant yet true to its values over time. Thus, we propose:

**H4:** Timelessness moderates the effect popularity has on consumer's film-brand identification.

**Iconic status.** Participants discussed iconic status as those films that go against the norm, are thought

provoking, immortalized in popular culture, lead the way and offer something entirely new/original – relative to that era in time. Examples provided include *Gone with the Wind* for its remarkable music, *Avatar* for its revolutionary 3D experience and *Sholay* for being the first true Indian western shot on 70 mm. Such iconic status explains why some films are recognized by far more people than those who have actually viewed them (British Film Institute, 2011). Whilst existing literature (Holt, 2002; Preece, Kerrigan and O'Reilly, 2018) suggests that a film's sequels contribute towards its subsequent iconic status, our findings show that iconic status could strengthen the effect of sequels on film-brand identification. For instance:

I always hear this thing about *Bond, Bond, Bond*... Then I started by watching the first one and ended up liking it, so I watched the second one and began to realize that this is something else. The character is iconic. I'm really into it. I basically jumped onto the brand wagon and found love for it. [Participant 4]

Based on the above discussion, we propose:

**H5:** Iconic status moderates the effect sequels have on consumer's film-brand identification.

**Film-brand identification and engagement.** Participants discussed their identification of a film brand as a 'state' in which they recognize a film to be not just a film but also a brand. Clearly this brand status is not spontaneously granted for all films, for example:

Not every film is a brand, you could even say most films are not brands, they are only movies! [Participant 11]

During the interviews, it became apparent that participants were more passionate about films they identified as brands than those that were merely films to them. Repetitive viewing, loyalty and advocacy for the brand, and purchase intention for brand-related merchandise, are discussed as the key behavioural measures that consumers use when identifying and engaging with films as brands. The findings echo existing works, showing that once a film is identified as a brand, consumers would engage in brand support behaviour. These include increased buying intention of various merchandise (Ahearne, Bhattacharya and Gruen, 2005), willingness to accept a brand extension and follow the brand (Kim, Han and Park, 2001; Lee *et al.*, 2013), repetitive

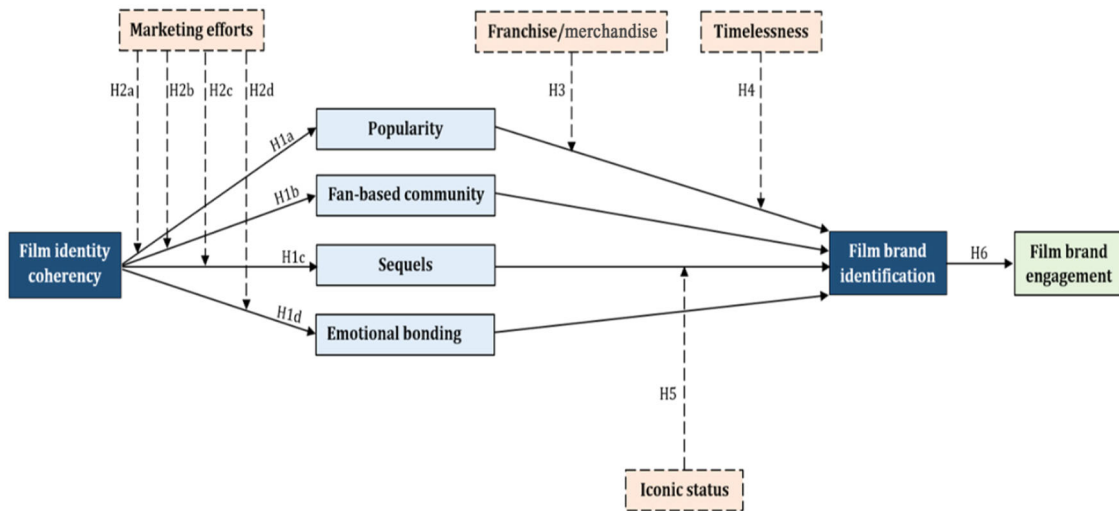


Figure 2. Film-brand engagement conceptual framework [Colour figure can be viewed at [wileyonlinelibrary.com](http://wileyonlinelibrary.com)]

viewing (Lacher and Mizerski, 1994) and subsequent word-of-mouth (Tuškej, Golob and Podnar, 2013). Therefore, we propose:

**H6:** Consumers' film-brand identification has a direct effect on film-brand engagement.

Figure 2 summarizes Study one's key findings and hypotheses in the film-brand engagement framework. Table 5 provides an overview of the proposed hypotheses, with exemplar quotes.

### Study two

In order to empirically validate the proposed framework, we conducted a questionnaire survey including three steps: pre-test, pilot test and main data collection. Table 6A explains the steps taken to ensure validity and reliability in detail. We followed Churchill's (1979) guidelines to ensure content and face validity of all constructs and scales. The questionnaire contained 11 constructs, derived from Study one. We adapted existing measurements for eight constructs and developed the operationalization for film identity coherency, fan-based community and timelessness, using findings derived from Study one (see Appendix C in the online Supporting Information for an overview of how these were developed).

The questionnaire required respondents to answer a series of questions with their most recently viewed film in mind. This approach allows film choices to be randomized, hence further minimiz-

ing interviewer bias (Collis and Hussey, 2014). The final set of constructs and corresponding items are presented in Appendix D (Supporting Information), listing each construct's conceptualization and operationalization. All items developed use seven-point Likert scales (ranging from 'Strongly disagree' to 'Strongly agree') with an option of 'Don't know' to capture any lack of awareness.

The final sample represents the UK population well, with 48.7% being male and 51.3% female. 88.7% were 'white' British participants and 11.3% were ethnic minorities. The sample also adequately represents the UK's key regions and has a good mix of educational qualifications and film viewing frequency, demonstrating validity and representation of the UK population (see Appendix E in the online Supporting Information).

**Study two findings.** To validate the proposed conceptual framework and to examine the hypotheses, data analysis was performed using three main techniques: exploratory factor analysis (EFA), confirmatory factor analysis (CFA) and the SPSS process macro. EFA and CFA together determine the construct reliability and validity of the proposed framework, whilst the SPSS process macro examines the proposed mediation and moderation effects.

With the emergence of three new constructs, conducting EFA first was deemed appropriate to detect any underlying structure and discover which items belong to which construct (Hair et al., 2010), thus purifying the measures (Churchill, 1979).



Table 5. Hypotheses development

Hypotheses	Source	Supportive quotes
<b>H1a</b> Film identity coherency → popularity → consumer film-brand Identification	This hypothesis was developed from Study one's interview findings because existing literature has not discussed the coherency of a film's identity	'Take the <i>Lord of the Rings</i> for example, the characters and their looks, the landscaping, the music, etc. all work really well together. It is clearly a brand . . . When I realized that New Zealand airline has used the film as a spin for its safety videos, it makes me smile because it is so popular!' [Participant 35]
<b>H1b</b> Film identity coherency → fan-based community → consumer film-brand identification	This hypothesis was developed from Study one's interview findings. Although virtual brand community has been discussed in the context of consumer engagement by Brodie <i>et al.</i> (2013), none of the existing literature has explored the role and practices of a film's fan-based community	'A film requires a fan-base, otherwise how will it become a brand? There's no brand without a fan who follows them or buys their stuff, otherwise it won't be a brand, even if we call this a brand and this a brand, if no one is attracted to it, it will disappear within a few months or a year' [Participant 10]
<b>H1c</b> Film identity coherency → sequels → consumer film-brand identification	This hypothesis was developed from Study one's interview findings. It extends Preece, Kerrigan and O'Reilly's (2018) work on brand longevity, by showing that sequels contribute to a film's brand status rather than its longevity	' <i>Star Wars</i> – the storyline of the original trilogy is wide enough and rich enough to allow prequels, sequels and origin stories to be made . . . This makes it almost immortal because you don't have to rely on the younger generation discovering the old <i>Star Wars</i> movies and becoming fans. You can have a factory that churns out movies on a regular basis that are based on the events of the original trilogy. It keeps the brand alive and fresh' [Participant 16]
<b>H1d</b> Film identity coherency → emotional bonding → consumer film-brand identification	This hypothesis was partially developed from Study one's interview findings, with some support from existing literature. Graffigna and Gambetti (2015) show that consumers' emotional bonding can contribute as a predictor of consumer-brand engagement. Nevertheless, our findings further indicate that emotional bonding plays a crucial role in mediating the relationship between a film's identity coherency and subsequent consumer brand identification	' <i>Beauty and the Beast</i> has inspired me a lot . . . It has a beautiful story, Bella has a kind heart, she loves the Beast, it doesn't matter what he looks like . . . I made a dress like hers for my wedding reception' [Participant 10]
<b>H2a</b> Film identity coherency → popularity, moderated by marketing efforts	This hypothesis was developed from Study one's interview findings based on Kerrigan's (2010) discussion about the importance of a film's marketing efforts	'Disney often ties up with McDonalds to offer toys as promotion for their upcoming films. <i>Monsters Inc.</i> is a good example, you know it is popular because of the marketing going about that' [Participant 28]
<b>H2b</b> Film identity coherency → fan-based community, moderated by marketing efforts	This hypothesis was developed from Study one's interview findings based on Kerrigan's (2010) discussion about the importance of a film's marketing efforts	'When <i>Star Wars</i> episode 7 was announced, it whetted the appetite of many hard-core fans, even though the storyline or the cast were not announced . . . the fans were discussing about these like crazy . . . ' [Participant 16]
<b>H2c</b> Film identity coherency → sequels, moderated by marketing efforts	This hypothesis was developed from Study one's interview findings based on Kerrigan's (2010) discussion about the importance of a film's marketing efforts	'The <i>Fast and Furious</i> film brand has always been so different with the iconic selection of cars, unique characters with strong morals and principles. When the films are promoted, there is always a lot of buzz and hype around them – especially when they tie in with the annual car shows around the globe to show off the latest rides from the upcoming films' [Participant 21]

(Continued)

Table 5. Continued

Hypotheses	Source	Supportive quotes
<b>H2d</b> Film identity coherency → emotional bonding, moderated by marketing efforts	This hypothesis was developed from Study one's interview findings based on Kerrigan's (2010) discussion about the importance of a film's marketing efforts	' <i>Anna Karina</i> – the one with Keira Knightley ... I like its dramatic story and historical costumes. I saw it everywhere during the release ... there were posters everywhere on the streets, on the buses. It grabbed my attention and reminded me of my fondness of the original <i>Anna Karina</i> from the 90s' [Participant 10]
<b>H3</b> Popularity → consumer film-brand identification, moderated by franchise/merchandise	This hypothesis was partially developed from Study one's interview findings, with some support from previous literature. Rather than positioning franchise/merchandise as an indicator of film-brand identification (Kapferer, 2008), we argue that franchise/merchandise moderates the effect of a film's popularity on film-brand identification	'I would say <i>Titanic</i> is more of a brand than a lot of movies ... because you can go and buy things that are related to <i>Titanic</i> ... memorabilia ... but you can't really ... like there's a lot of movies ... when you look for something that's related to it ... I wouldn't be able to find' [Participant 15]
<b>H4</b> Popularity → consumer film-brand identification, moderated by timelessness	This hypothesis was partially developed from Study one's interview findings, with some support from previous literature. Preece, Kerrigan and O'Reilly (2018) have conceptually argued that a film's longevity can contribute towards a film's popularity as a predictor. However, our findings suggest that a film's timelessness has the ability to intensify the impact a film's popularity has on consumer film-brand identification, as a moderator	'Some films like <i>Sound of Music</i> would become brands just because of their exposure, success, impact on audiences, and they linger, people want to see them again and again, from one generation to the next' [Participant 15]
<b>H5</b> Sequels → consumer film-brand identification, moderated by iconic status	This hypothesis was partially developed from Study one's interview findings, with some support from existing literature. Preece, Kerrigan and O'Reilly's (2018) and Holt's (2002) conceptual stances suggest that a film's sequels contribute towards a film's subsequent iconic status. Nevertheless, our findings indicate that a film's iconic status has the ability to moderate the impact a film's sequels have on consumer film-brand identification	'I always hear the thing about <i>Bond, Bond, Bond</i> ... Then I started by watching the first one and ended up liking it, so I watched the second one and began to realize that this is something else. The character is iconic. I'm really into it. I basically jumped onto the brand wagon and found love for it' [Participant 4]
<b>H6</b> Consumer film-brand identification → film-brand engagement	This hypothesis was developed from existing literature and confirmed by Study one's interview findings. Existing works show that consumer brand identification leads to consumer-brand engagement behaviour, such as: brand loyalty (Kim, Han and Park, 2001), increased buying intention (Ahearne, Bhattacharya and Gruen, 2005), positive word-of-mouth (Tuskej, Golob and Podnar, 2013), although these have not been tested in terms of film consumption	'I am an absolute Disney fan. My favourite is <i>The Incredibles</i> . When my parents asked me which movie I wanted to watch, I would always suggest <i>The Incredibles</i> every time. It is a brand to me. During my trip to America, I bought a bag from Hot Topic because it had <i>The Incredibles</i> on it!' [Participant 14]

Table 6A. Questionnaire validation procedure

<b>Pre-test</b>	Three marketing academics and one film industry practitioner were invited to scrutinize the questionnaire and to give feedback, to ensure that all the items were suitably modified for films. Upon satisfactory verification, another 30 participants were given the questionnaire, using convenience sampling. No errors were reported, some minor amendments were made after receiving feedback from respondents (e.g. the definition of 'iconic' was added and the layout was revised to improve reader-friendliness).
<b>Pilot study</b>	A pilot study was conducted with 200 participants through convenience sampling of university students in a UK university, to assess the reliability of the measurements. The results of the pilot study indicated that all constructs have a high level of internal consistency (Cronbach's $\alpha > 0.70$ , ranging from 0.74 to 0.96).
<b>Main data collection</b>	In order to assist with the main UK nationwide data collection, a market research company was approached. A quota sampling strategy was employed based on the 2011 UK Census, in relation to various demographics (e.g. age, gender, ethnicity, region and level of education) (McDaniel and Gates, 2009). We received 1136 responses, wherein 106 were omitted due to incompleteness or excessive missing answers (Hair <i>et al.</i> , 2010), leading to a final sample of 1030.

Table 6B. Reasons for construct elimination

Fan-based community	This construct was eliminated since there were some items related to 'fan-based community' which cross-loaded with 'marketing efforts'. This cross-loading could be explained through the notion that a 'fan-based community' may contribute to a film's pre-release buzz (Schneider, 2012) if there is an existing fan following, such as the case with sequels (Preece, Kerrigan and O'Reilly, 2018) or when a film has been adapted from another creative cultural industry (O'Reilly and Kerrigan, 2013).
Brand following	This construct was eliminated because some items were dropped due to lack of convergent validity, with items loading $< 0.50$ (Hair <i>et al.</i> , 2010). Conceptually, the construct is intertwined with 'repetitive viewing', since 'repetitive viewing' could be regarded as a facet of one's loyalty for a film, because it is an act of ritual that symbolizes one's admiration for a film (Hart, Kerrigan and vom Lehn, 2016), which was also reiterated in our qualitative findings.

Principal component analysis with Promax rotation was performed on all 11 constructs, comprising 59 items using the pilot data. Items were retained if (1) they loaded 0.50 or more on a factor, (2) they did not load more than 0.50 on two factors and (3) they had a Cronbach's alpha loading of more than 0.7 (Hair *et al.*, 2010). Fan-based community and brand following were eliminated during EFA. Please see Table 6B for further explanation.

The results reveal that nine constructs (41 items in total) were retained from the original 11. These nine constructs (eigenvalues  $> 1$ ) explain 79.1% of the total variance. Harman's single-factor test was then conducted to identify any common method variance. All variables were included in the analysis, constraining the factors to be extracted to one, using an unrotated solution. 38.8% of the variance was explained by a single factor, which is below the 50% threshold, confirming that this model does not suffer from any common method bias issue (Podsakoff *et al.*, 2003). CFA was then conducted in AMOS version 25 with 1030 respondents, to assess the measurement model's validity before mediation and moderation tests (Hair *et al.*, 2010). The full measurement model fits the data

well ( $\chi^2_{[732]} = 3448.57$ ,  $p < 0.001$ ;  $\chi^2/df = 4.71$ ; IFI = 0.93; TLI = 0.92; CFI = 0.93; RMSEA = 0.06). This model was significant, which is common with larger data sets (Hair *et al.*, 2010). Constructs' reliability was tested using both composite reliability and Cronbach's alpha, and they were all above the recommended level, as shown in Table 7. The correlation (covariance) among the constructs is also acceptably low, ranging from 0.14 to 0.77; AVE is  $> 0.5$  (Fornell and Larcker, 1981) and loading coefficients are all  $> 0.50$  (Hair *et al.*, 2010), thus meeting convergent and discriminant validity. A further test to ensure the adequacy of discriminant validity was performed successfully, since the square root of each construct's AVE is greater than the bivariate correlations (coefficients range from 0.77 to 0.93,  $p < 0.01$ ) and there are also no substantial cross loadings with standardized residuals all  $< 0.28$  (Byrne, 2001). Thus, the assessment results support the adequacy of discriminant validity of the measurement model (Table 7).

**Mediation.** The mediation test was performed using the SPSS process macro, as recommended by Preacher and Hayes (2008). Film identity coherency was found to be a significant predictor of

Table 7. Model validity measures

Construct	Cronbach ( $\alpha$ )	CR	AVE	MSV	FB identification	FB engagement	Emotion	Iconic	FI coherency	Popular	Time	Franchise Marketing	Sequel
FB identification	0.96	0.96	0.86	0.50	<b>0.93</b>								
FB engagement	0.90	0.83	0.63	0.52	0.52***	<b>0.79</b>							
Emotion	0.92	0.90	0.70	0.39	0.57***	0.63***	<b>0.84</b>						
Iconic	0.92	0.91	0.73	0.60	0.55***	0.72***	0.55***	<b>0.85</b>					
FI coherency	0.87	0.87	0.63	0.51	0.30***	0.72***	0.46***	0.66	<b>0.79</b>				
Popular	0.90	0.90	0.70	0.44	0.29***	0.60***	0.27***	0.66	0.58	<b>0.84</b>			
Time	0.90	0.86	0.68	0.60	0.60***	0.68***	0.55***	0.77***	0.59***	0.54***	<b>0.82</b>		
Franchise	0.91	0.91	0.73	0.50	0.70***	0.31***	0.44***	0.40***	0.14***	0.24***	0.46***	<b>0.85</b>	
Marketing	0.91	0.90	0.70	0.48	0.58***	0.40***	0.34***	0.48***	0.28***	0.37***	0.52***	0.70***	<b>0.84</b>
Sequel	0.69	0.70	0.53	0.24	0.41***	0.33***	0.14***	0.46***	0.25***	0.46***	0.49***	0.38***	0.73

Note: This table includes readings for Cronbach ( $\alpha$ ), composite reliability (CR), average variance extracted (AVE) and maximum shared variance (MSV). The square root of the AVE is represented on the diagonal in bold, whilst the correlations of the constructs are represented off diagonal. Significance of correlations:

† p < 0.10;

\* p < 0.05;

\*\* p < 0.01;

\*\*\* p < 0.001, calculated via Gaskin and Lim's (2016) 'Master Validity Tool' AMOS Plugin, measures taken from Hu and Bentler (1999).

all three hypothesized mediators ( $p \leq 0.001$ ). Popularity, sequels and emotional bonding were also found to be significant predictors of film-brand identification (see Figure 3). In all three cases, the introduction of the mediators has led to a reduction in the effect sizes of the original direct effects, whilst all three confidence intervals are also not equal to 0, which suggests that mediation is taking place (Preacher and Hayes, 2008).

Popularity and sequels were found to partially mediate, since the  $IV \rightarrow DV$  total effect is significant and so is the direct effect ( $IV \rightarrow M \rightarrow DV$ ) after the introduction of these two mediators. Interestingly, after the introduction of the emotional bonding mediator, the direct effect has become insignificant, indicating full mediation (Baron and Kenny, 1986; Hair et al., 2010; Preacher and Kelley, 2011; Zhao, Lynch and Chen, 2010). Since paths 'a' and 'b' were significant for all mediators, mediation analysis was further conducted using the bootstrapping method with bias-corrected confidence estimates, obtaining a 95% confidence interval of indirect effects with 5000 bootstrap resamples (Preacher and Hayes, 2008). The findings reveal that popularity ( $\beta = 0.40$ ,  $p \leq 0.001$ ,  $PM = 0.36$ ,  $abcs = 0.11$ ) and sequels ( $\beta = 0.53$ ,  $p \leq 0.001$ ,  $PM = 0.24$ ,  $abcs = 0.09$ ) are both partial mediators, whilst emotional bonding reveals the most impact as a full mediator ( $\beta = 0.06$ , ns,  $PM = 0.90$ ,  $abcs = 0.29$ ). See Table 8 for the mediation results.

**Moderation.** Subsequently, the moderation effect of marketing efforts, franchise/merchandise, timelessness and iconic status is tested using the SPSS process macro model no. 1 (Hayes, 2013), as shown in Figure 4.

The interaction effects between marketing efforts and film identity coherency were examined against popularity (H2a), sequels (H2c) and emotional bonding (H2d). The findings show that film identity coherency ( $\beta = 0.55$ ;  $p \leq 0.001$ ) and marketing efforts ( $\beta = 0.22$ ;  $p \leq 0.001$ ) accounted for a significant amount of variance in a film's popularity ( $R^2 = 0.46$ ;  $p \leq 0.001$ ). The interaction term (Aiken and West, 1991) resulted in a significant negative effect ( $\beta = -0.05$ ;  $p \leq 0.01$ ) and demonstrated a significant proportional change in the variance of a film's popularity ( $\Delta R^2 = 0.004$ ;  $p \leq 0.01$ ). This indicates that when marketing efforts are increased, the effect a coherent film

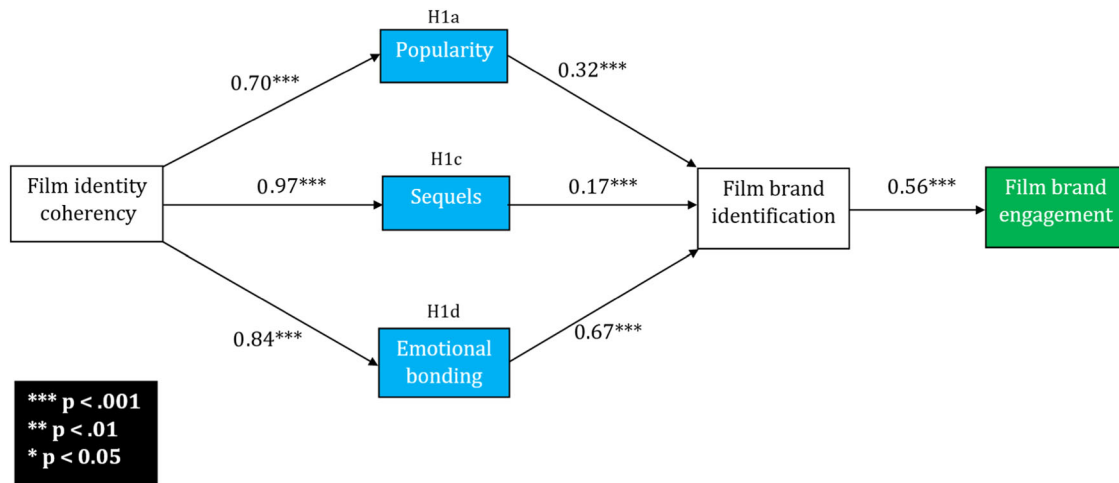


Figure 3. Mediation analysis [Colour figure can be viewed at wileyonlinelibrary.com]

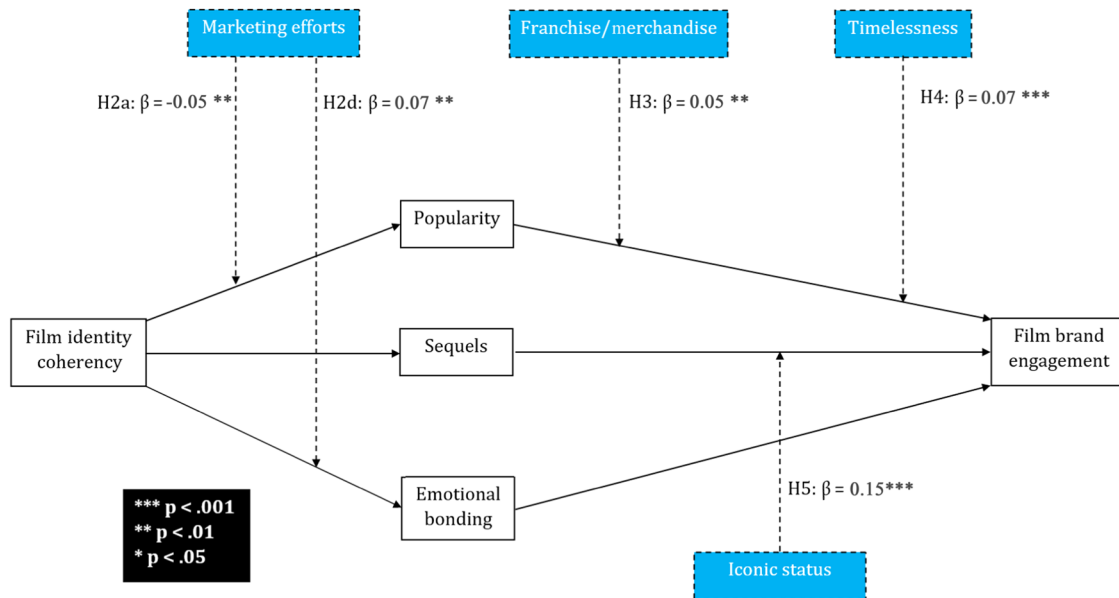


Figure 4. Moderation analysis [Colour figure can be viewed at wileyonlinelibrary.com]

identity has on a film's popularity is marginally lessened, highlighting the substitutional effect of marketing efforts, thus H2a is partially supported. This result may be counterintuitive; however, it suggests that marketing effort could be employed as a feeble attempt to rescue a film's popularity due to its lack of identity coherency.

Film identity coherency ( $\beta = 0.20$ ;  $p \leq 0.001$ ) and marketing effort ( $\beta = 0.42$ ;  $p \leq 0.001$ ) also accounted for a significant amount of variance in sequels ( $R^2 = 0.19$ ;  $p \leq 0.001$ ). However, the in-

teraction term between marketing efforts and film identity coherency was found to be insignificant, thus having no moderation on the relation between film identity coherency and sequels ( $\Delta R^2 = 0.00$ ; ns;  $\beta = 0.004$ ; ns) and rejecting H2c. A plausible reason for this insignificance may be that consumers are already familiar with a film's premise if it has more than one part. Thus, a film's marketing efforts may not have any effect on strengthening the relation between film identity coherency and its sequels.

Film identity coherency ( $\beta = 0.45$ ;  $p \leq 0.001$ ) and marketing efforts ( $\beta = 0.24$ ;  $p \leq 0.001$ ) also accounted for a significant amount of variance in emotional bonding ( $R^2 = 0.31$ ;  $p \leq 0.001$ ). The interaction term between marketing efforts and film identity coherency was also found to significantly strengthen the effect of film identity coherency on emotional bonding ( $\Delta R^2 = 0.006$ ;  $p \leq 0.01$ ;  $\beta = 0.07$ ;  $p \leq 0.01$ ). H2d is therefore confirmed, proving marketing efforts' positive moderating effect on the relation between film identity coherency and emotional bonding.

Popularity ( $\beta = 0.15$ ;  $p \leq 0.001$ ) and franchise/merchandise ( $\beta = 0.70$ ;  $p \leq 0.001$ ) accounted for a significant amount of variance in film-brand identification ( $R^2 = 0.56$ ;  $p \leq 0.001$ ). The results showed that the franchise/merchandise interaction term ( $\Delta R^2 = 0.002$ ;  $p \leq 0.01$ ;  $\beta = 0.05$ ;  $p \leq 0.01$ ) significantly and positively affects the relationship between popularity and film-brand identification. This affirms H3 and proves that the relation between popularity and film-brand identification could be further strengthened by franchise/merchandise activities.

Timelessness ( $\beta = 0.70$ ;  $p \leq 0.001$ ) and popularity ( $\beta = -0.06$ ; ns) accounted for a significant amount of variance in film-brand identification ( $R^2 = 0.42$ ;  $p \leq 0.001$ ). Timelessness ( $\beta = 0.07$ ;  $p \leq 0.001$ ;  $\Delta R^2 = 0.01$ ;  $p \leq 0.001$ ) also significantly and positively moderated the effect of popularity on film-brand identification. Based on the finding, H4 is supported.

Sequels ( $\beta = 0.13$ ;  $p \leq 0.001$ ) and iconic status ( $\beta = 0.66$ ;  $p \leq 0.001$ ) were tested and they accounted for a significant amount of variance in film-brand identification ( $R^2 = 0.43$ ;  $p \leq 0.001$ ). Iconic status also significantly and positively moderated the relation between sequels and film-brand identification ( $\Delta R^2 = 0.04$ ;  $p \leq 0.001$ ;  $\beta = 0.15$ ;  $p \leq 0.001$ ). This suggests that sequels' effect on film-brand identification could be further strengthened by iconic status, therefore H5 was supported. Table 9 summarizes the moderation results.

Finally, film-brand identification's impact on film-brand engagement is positive ( $\beta = 0.56$ ;  $p \leq 0.001$ ), showing that once consumers identify a film as a brand, they will engage in brand support behaviour.

## Discussion

By taking on the novel approach of developing and validating a film-brand engagement framework, derived from consumer insights, this paper contributes to existing film-branding literature in several ways. Firstly, the film-brand engagement framework explains how consumers would interpret, identify and engage with films as brands in a sequential order, illuminating the routes by which films are identified and engaged by consumers as brands, taking the consumer-centric perspective to film branding. It is important to note that not all factors in the framework are mandatory to facilitate consumer-brand engagement; the more a film can incorporate, arguably the higher the chances that consumers will go on to identify and engage with such films as brands.

The model starts with film identity coherency as the antecedent. It shows that when a film communicates its identity cues in a clear, considered and careful manner to ensure all features are coherently composed to complement each other aesthetically and meaningfully, the film will have a higher chance of being considered as a brand, reflecting Kapferer's (2012) thoughts on the effectiveness of coherency to differentiate amongst the competition. Film identity coherency then leads to film-brand identification through popularity, emotional bonding and sequels. Film-brand identification is key in the consumer film-brand engagement framework because it resembles the state/condition wherein a film is considered not only a film, but also a brand, achieving the desired brand status (Hollebeek, Glynn and Brodie, 2014). By specifically revealing how brand coherency drives consumer-brand identification through possible routes of popularity, sequels and emotional bonding, the finding depicts a clear formula for the development of film brands, extending Keller's (2008) work.

The results also confirm that film-brand identification drives film-brand engagement, which focuses on the behavioural dimensions of engagement, such as positive word-of-mouth, repetitive viewing and purchase intention of film brand-related merchandise. The finding confirms previous works on the association between brand identification and brand engagement (Hollebeek, Glynn and Brodie, 2014; Leckie, Nyadzayo and Johnson, 2016), but shows brand identification as

Table 8. Summary of hypothesized mediation effects

Hypotheses	B			Indirect effect			Bootstrapping indirect effects BCa 95% CI			Effect sizes		Hypotheses test results
	A	b	C	c'	B	Boot SE	LL	UL	PM	$\beta$ ; abcs (95 CI LL, UL)		
<b>H1a</b> : Film identity → coherency → popularity → film-brand identification	0.70***	0.32***	0.62***	0.40***	0.22	0.05	0.13	0.31	0.70 × 0.32 (0.70) + 0.32 = 0.40	abcs = 0.11 (0.07, 0.16)	Support for partial mediation	
<b>H1b</b> : Film identity → coherency → fan-based community → film-brand identification	-	-	-	-	-	-	-	-	-	-	H1b eliminated***	
<b>H1c</b> : Film identity → coherency → sequels → film-brand identification	0.97***	0.17***	0.69***	0.53***	0.16	0.03	0.10	0.24	0.97 × 0.17 (0.97) + 0.17 = 0.53	abcs = 0.09 (0.06, 0.13)	Support for partial mediation	
<b>H1d</b> : Film identity → coherency → emotional bonding → film-brand identification	0.84***	0.67***	0.62***	0.06	0.56	0.04	0.44	0.65	0.84 × 0.67 (0.84) + 0.67 = 0.90	abcs = 0.29 (0.25, 0.33)	Support for full/stronger mediation	

Note:  $\beta$  = standardized regression weights for a, b, c and c'; path a refers to IV (X) to mediator (M); path b refers to M to DV (Y); path c is the total effect; path c' is the direct effect of X to Y after controlling for M; SE = standard error; BCa = bias corrected and accelerated; 5000 bootstrap samples, CI = confidence interval, LL = lower limit, UL = upper limit (PROCESS macro, Preacher and Hayes, 2008). Mediation was further examined through effect sizes: PM = percentage mediation; abcs = completely standardized indirect effect on X to Y (Preacher and Kelley, 2011, pp. 97–99). Significance of correlations:

\* p < 0.05;  
 \*\* p < 0.01;  
 \*\*\* p < 0.001.

H1b was eliminated during the EFA stage (see Study two data analysis).

Table 9. Summary of hypothesized moderation effects

Relationships	Direct effect $\beta$ value	R <sup>2</sup>	Interaction effect $\beta$ value	$\Delta R^2$	Hypothesis test result
<i>Popularity</i>					
Film identity coherency $\rightarrow$ popularity	0.55***	–	–	–	–
Marketing efforts $\rightarrow$ popularity	0.22***	0.46***	–	–	–
Film identity coherency $\times$ marketing efforts $\rightarrow$ popularity	–	–	–0.05**	0.004**	H2a partially supported
<i>Fan-based community</i>					
Film identity coherency $\rightarrow$ fan-based community	–	–	–	–	–
Marketing efforts $\rightarrow$ fan-based community	–	–	–	–	–
Film identity coherency $\times$ marketing efforts $\rightarrow$ fan-based community	–	–	–	–	H2b eliminated*
<i>Sequels</i>					
Film identity coherency $\rightarrow$ sequels	0.20***	–	–	–	–
Marketing efforts $\rightarrow$ sequels	0.42***	0.19***	–	–	–
Film identity coherency $\times$ marketing efforts $\rightarrow$ sequels	–	–	0.004 ns	0.00 ns	H2c rejected
<i>Emotional bonding</i>					
Film identity coherency $\rightarrow$ emotional bonding	0.45***	–	–	–	–
Marketing efforts $\rightarrow$ emotional bonding	0.24***	0.31***	–	–	–
Film identity coherency $\times$ marketing efforts $\rightarrow$ emotional bonding	–	–	0.07**	0.006**	H2d supported
<i>Film-brand identification</i>					
Popularity $\rightarrow$ film-brand identification	0.15***	–	–	–	–
Franchise/merchandise $\rightarrow$ film-brand identification	0.70***	0.56***	–	–	–
Popularity $\times$ franchise/merchandise $\rightarrow$ film-brand identification	–	–	0.05**	0.002**	H3 supported
Popularity $\rightarrow$ film-brand identification	–0.06 ns	–	–	–	–
Timelessness $\rightarrow$ film-brand identification	0.70***	0.42***	–	–	–
Popularity $\times$ timelessness $\rightarrow$ film-brand identification	–	–	0.07***	0.01***	H4 supported
Sequels $\rightarrow$ film-brand identification	0.13***	–	–	–	–
Iconic status $\rightarrow$ film-brand identification	0.66***	0.43***	–	–	–
Sequels $\times$ iconic status $\rightarrow$ Film-brand identification	–	–	0.15***	0.04***	H5 supported



a precursor to film-brand engagement, rather than a consequence. This highlights the importance of brand identification in terms of film consumption, showing that consumers would identify films as brands first before their enactment of brand engagement behaviour.

Besides the main constructs, the results also confirm the importance of popularity, sequels and emotional bonding with consumers as mediators between film identity coherency and film-brand identification, showing that a film's popularity, number of sequels and the emotional bonding that consumers have with the film can all lead to better film-brand identification. With its full mediating effect, emotional bonding has emerged as the most powerful mediator. This suggests that feeling emotionally connected to films is the most effective way for consumers to identify films as brands – be it moral value with regard to the storyline, characters, etc. which they can resonate with (Oatley, 1999), or through self-congruity (Bagozzi, Batra and Ahuvia, 2014). The findings extend the previous debate on brand engagement to film branding (Gambetti, Graffigna and Biraghi, 2012; Graffigna and Gambetti, 2015).

Besides mediators, the results also reveal the importance of marketing efforts, timelessness, franchise/merchandise and iconic status as four moderators in explaining consumers' film-brand identification and engagement. The results show that marketing efforts can significantly strengthen the relationship between identity's coherency and emotional bonding, as well as substitute the effect of identity's coherency on popularity, providing empirical support on the use of marketing efforts to enhance a film's marketability and playability (Kerrigan, 2010). Nevertheless, although significant, marketing efforts' moderation effect is relatively small, meaning that rather than spending lots of the post-production marketing budget on promoting films, it is critical that film identity coherency is adhered to in the first place.

Furthermore, iconic status is found to significantly strengthen sequels' impact on film-brand engagement, showing that when a film's storyline extension potential is backed up with an iconic status, it has a much higher chance of being identified as a brand, offering empirical support to the discussion of Holt (2004) and Young *et al.* (2008). The sense of timelessness and franchise/merchandise initiative further enhance the effect of popularity on film-brand identification, showing that when a

film is popular and deemed timeless or has franchise/merchandise goods available, the film is more likely to be recognized as a brand. This highlights the value of creating films that are classic, which can be enjoyed by generations regardless of the passage of time (Preece, Kerrigan and O'Reilly, 2018), and supports the argument of Kapferer (2008) whereby a brand cannot exist for consumers without a supporting product or service that embodies the brand. The tangibility of merchandise and franchise (e.g. theme parks, TV shows, novels, video games, etc.) adds another dimension for the consumer to interact and resonate with a film as a brand, since it allows them to showcase their passionate behaviour and admiration amongst their immediate social circles and wider community of fans.

## Managerial implications

Table 10 lists the managerial implications for production houses, film-makers and film marketing agencies, derived from the film-brand engagement framework.

## Limitations and future research directions

Despite the contributions, this paper has its limitations. Firstly, film is considered as a cultural entity, therefore it is important for future studies to validate the consumer film-brand engagement framework using data from outside the UK to enhance its generalizability. Cross-cultural research is also recommended to further investigate whether consumers' identification and engagement with films as brands would differ across cultures. Furthermore, film-branding literature is still in its infancy.

Whilst our framework shows how and why consumers could identify and engage with films as brands, leading to favourable brand-engagement support behaviour, it has not discussed the possible 'dark side' of film brands. For example, consumers' obsessions with a film brand may turn into abuse and bullying, if the creative choices made by film-makers are at odds with the consumers' views and beliefs of the brand. This is illustrated by the heated criticism of Ben Affleck's casting as Batman in *Batman versus Superman: Dawn of*

Table 10. Managerial implications

**Production houses**

- Use a film's identity coherency and capability to bond emotionally with the chosen target audience as two key criteria, when evaluating and allocating a film's promotional resources, in order to position films as brands in the minds of consumers.
- Develop innovative merchandising and franchising concepts (e.g. theme parks, theatre productions or activities) unique to a film's premise, to strengthen a film's popularity and view as a film brand.

**Film-makers**

- Build a strong/coherent film identity by including: identifiable characters with depth of exploration; a strong message; consistent creative themes and references to past involvement and nostalgia (if adapted from an existing media text, e.g. *Harry Potter*).
- Nurture an emotional bond during the target audience's film consumption journey; gain a deeper understanding of them/their values and cater for these coherently in the storyline, character selection, plot arrangements, music choice and *mise-en-scene*, etc.
- Apply the consumer film-brand engagement framework to be in a better position to secure funds to greenlight film projects with potential investors and attract additional capital through negotiating financing deals and downstream contracts.

**Film marketing agencies**

- Clarify what the production house wants to achieve (i.e. increase a film's popularity, build an emotional bond with the target audience, or highlight a film's unique selling point) with the allocated marketing budget before implementing promotional activities.
- For films that are already released, promote their iconic status/timelessness and take advantage of cultural industries and populist worlds as facilitators of the process.
- Anticipate and embrace that a film will pass through time, be subject to cultural forces, as well as that consumers have become co-creators of the brand.
- Maintain a sense of timelessness to sustain authenticity, by not always managing the brand with vested commercial interests; empower consumers to lead the way in co-creating the brand, going against the norm and consistently offering something new.

*Justice*, or the departure of director Zack Snyder during the making of *Justice League*, both contributing to below-target box-office performances and returns on investment (Bianco, 2018). Future research is recommended to explore the adverse consequences of films as brands; after all, not all films produced by film-makers are intended to take up branded status. Furthermore, not all films will succeed in engaging their consumers as brands and enjoy engagement-support behaviour.

**References**

- Aaker, J. L. (1997). 'Dimensions of brand personality', *Journal of Marketing Research*, **34**, pp. 347–356.
- Addis, M. and M. B. Holbrook (2010). 'Consumers' identification and beyond: attraction, reverence and escapism in the evaluation of films', *Psychology & Marketing*, **27**, pp. 821–845.
- Ahearne, M., C. B. Bhattacharya and T. Gruen (2005). 'Antecedents and consequences of customer–company identification: expanding the role of relationship marketing', *Journal of Applied Psychology*, **90**, pp. 574–585.
- Aiken, L. S. and S. G. West (1991). *Multiple Regression: Testing and Interpreting Interactions*. Thousand Oaks, CA: Sage.
- Albert, S. (1998). 'Movie stars and the distribution of financially successful films in the motion picture industry', *Journal of Cultural Economics*, **22**, pp. 249–270.
- Atkinson, P., A. Coffey and S. Delamont (2003). *Key Themes in Qualitative Research: Continuities and Changes*. Oxford: AltaMira Press.
- Bagozzi, R. P., R. Batra and A. C. Ahuvia (2014). 'Brand Love: Construct Validity, Managerial Utility, and New Conceptual Insights', Working paper. Ann Arbor, MI: University of Michigan.
- Baron, R. M. and D. A. Kenny (1986). 'The moderator–mediator variable distinction in social psychological research: conceptual, strategic and statistical considerations', *Journal of Personality and Social Psychology*, **51**, pp. 1173–1182.
- Bassi, F. (2010). 'Experiential goods and customer satisfaction: an application to films', *Quality Technology and Quantitative Management*, **7**, pp. 51–67.
- Batat, W. and M. Wohlfeil (2009). 'Getting lost 'Into the Wild': understanding movie enjoyment through a narrative transportation approach', *Advances in Consumer Research*, **36**, pp. 372–377.
- Batson, C. D., M. S. Clark and J. Mills (1993). 'Communal and exchange relationships: what is the difference? Comment/reply', *Personality and Social Psychology Bulletin*, **19**, p. 677.
- Becker, H. S. (1982). *Art Worlds*. Berkeley, CA: University of California Press.
- Bhattacharya, C. B. and S. Sen (2003). 'Consumer–company identification: a framework for understanding consumers' relationships with companies', *Journal of Marketing*, **67**, pp. 76–88.
- Bianco, J. (2018). 'What went wrong with *Justice League* at the box office?', *Looper*. Available on: <https://www.looper.com/96786/went-wrong-justice-league-box-office/> [accessed 1 September 2019]
- Blythe, J. (1997). *The Essence of Consumer Behaviour*. Harlow: Pearson Education.
- Borden, N. H. (1964). 'The concept of marketing mix', *Journal of Advertising Research*, **4**, pp. 2–7.
- Bowden, J. L. H. (2009). 'The process of customer engagement: a conceptual framework', *Journal of Marketing Theory and Practice*, **17**, pp. 63–74.
- Brace, I. (2013). *Questionnaire Design: How to Plan, Structure and Write Survey Material for Effective Market Research*. London: Kogan Page.
- British Film Institute (2011). 'Opening our eyes: how film contributes to the culture of the UK'. Report for the BFI by Northern Alliance and Ipsos MediaCT.

- British Film Institute (2018). *BFI Statistical Yearbook 2018*. London: BFI.
- Brodie, R. J., L. D. Hollebeek, B. Juric and A. Ilic (2011). 'Customer engagement: conceptual domain, fundamental propositions, and implications for research', *Journal of Service Research*, **14**, pp. 252–271.
- Brodie, R. J., A. Ilic, B. Juric and L. Hollebeek (2013). 'Consumer engagement in a virtual brand community: an exploratory analysis', *Journal of Business Research*, **66**, pp. 105–114.
- Brown, T. J., T. E. Barry, P. A. Dacin and R. F. Gunst (2005). 'Spreading the word: investigating antecedents of consumers' positive word-of-mouth intentions and behaviours in a retailing context', *Journal of the Academy of Marketing Science*, **33**, pp. 123–138.
- Bryman, A. and E. Bell (2015). *Business Research Methods*, 4th edn. Oxford: Oxford University Press.
- Byrne, B. M. (2001). 'Structural equation modelling with AMOS, EQS, and LISREL: comparative approaches to testing for the factorial validity of a measuring instrument', *International Journal of Testing*, **1**, pp. 55–86.
- Calder, B. J., M. S. Isaac and E. C. Malthouse (2013). 'Taking the customer's point-of-view: Engagement or satisfaction?', Working paper 13–102, Marketing Science Institute.
- Cappellini, B. and D. A. W. Yen (2013). 'Little emperors in the UK: acculturation and food over time', *Journal of Business Research*, **66**, pp. 968–974.
- Carlson, B. D., T. A. Suter and T. J. Brown (2008). 'Social versus psychological brand community: the role of psychological sense of brand community', *Journal of Business Research*, **61**, pp. 284–291.
- Chaudhuri, A. and M. B. Holbrook (2001). 'The chain of effects from brand trust and brand affect to brand performance: the role of brand loyalty', *Journal of Marketing*, **65**, pp. 81–93.
- Chaudhuri, A. and M. B. Holbrook (2002). 'Product-class effects on brand commitment and brand outcomes: the role of brand trust and brand affect', *Journal of Brand Management*, **10**, pp. 33–58.
- Churchill, G. A. (1979). 'A paradigm for developing better measures of marketing constructs', *Journal of Marketing Research*, **16**, pp. 64–73.
- Collis, J. and R. Hussey (2014). *Business Research: A Practical Guide for Undergraduate and Postgraduate Students*, 4th edn. New York: Palgrave Macmillan.
- Cooper-Martin, E. (1991). 'Consumers and movies: some findings on experiential products'. In R. H. Holman and M. R. Solomon (eds), *NA - Advances in Consumer Research*, Vol. **18**, pp. 372–378. Provo, UT: Association for Consumer Research.
- Creswell, J. W. and V. L. Plano Clark (2011). *Designing and Conducting Mixed Methods Research*. Thousand Oaks, CA: Sage.
- Denzin, N. K. (1989). *The Research Act: A Theoretical Introduction to Sociological Methods*, 3rd edn. Englewood Cliffs, NJ: Prentice Hall.
- Dessart, L., C. Veloutsou and A. Morgan-Thomas (2016). 'Capturing consumer engagement: duality, dimensionality and measurement', *Journal of Marketing Management*, **32**, pp. 399–426.
- Edhlund, B. M. and A. G. McDougall (2011). *Nvivo 9 Essentials: Your Guide to the World's Most Powerful Data Analysis Software*. Melbourne: QSR International.
- Eliashberg, J., S. K. Hui and J. Zhang (2014). 'Assessing box office performance using movie scripts: a kernel-based approach', *IEEE Transactions on Knowledge and Data Engineering*, **2014**, pp. 2639–2648.
- Fornell, C. and D. F. Larcker (1981). 'Structural equation models with unobservable variables and measurement error: algebra and statistics', *Journal of Marketing Research*, **18**, pp. 382–388.
- Fournier, S. (1998). 'Consumers and their brands: developing relationship theory in consumer research', *Journal of Consumer Research*, **24**, pp. 343–368.
- Gambetti, R. C. and G. Graffigna (2010). 'The concept of engagement: a systematic analysis of the ongoing marketing debate', *International Journal of Market Research*, **52**, pp. 801–826.
- Gambetti, R. C., G. Graffigna and S. Biraghi (2012). 'The grounded theory approach to consumer-brand engagement: the practitioner's standpoint', *International Journal of Market Research*, **54**, pp. 659–687.
- Gaskin, J. and J. Lim (2016). 'Master Validity Tool, AMOS Plugin'. Available at: [http://statwiki.kolobkreatations.com/index.php?title=Main\\_Page](http://statwiki.kolobkreatations.com/index.php?title=Main_Page) (accessed on: 9 May 2018)
- Gillespie, M. (2005). *Media Audiences*. Maidenhead: Open University Press.
- Gong, J. J., W. A. van der Stede and S. M. Young (2011). 'Real options in the motion picture industry: evidence from film marketing and sequels', *Contemporary Accounting Research*, **28**, pp. 1438–1466.
- Graffigna, G. and R. C. Gambetti (2015). 'Grounding consumer-brand engagement: a field-driven conceptualisation', *International Journal of Market Research*, **57**, pp. 605–630.
- Grainge, P. (2007). *Brand Hollywood: Selling Entertainment in a Global Media Age*. Hoboken, NJ: Taylor & Francis.
- Greene, J. C., V. J. Caracelli and W. F. Graham (1989). 'Toward a conceptual framework for mixed-method evaluation designs', *Educational Evaluation and Policy Analysis*, **11**, pp. 255–274.
- Grover, L., M. Halinski and L. Duxbury (2016). 'Is it just me? Exploring perceptions of organisational culture change', *British Journal of Management*, **27**, pp. 567–582.
- Gummerus, J., V. Liljander, E. Weman and M. Pihlström (2012). 'Customer engagement in a Facebook brand community', *Management Research Review*, **35**, pp. 857–877.
- Hagger, M. S., N. Chatzisarantis and S. J. H. Biddle (2001). 'The influence of self-efficacy and past behaviour on the physical activity intentions of young people', *Journal of Sports Sciences*, **19**, pp. 711–725.
- Hair, J. F., W. C. Black, B. J. Babin and R. E. Anderson (2010). *Multivariate Data Analysis*, 7th edn. Upper Saddle River, NJ: Prentice Hall.
- Hall, S. (1980). 'Recent developments in theories of language and ideology: a critical note'. In S. Hall, D. Hobson, A. Lowe and P. Willis (eds), *Culture, Media, Language: Working Papers in Cultural Studies 1972–1979*, pp. 157–162. London: Hutchinson.
- Hart, A., F. Kerrigan and D. vom Lehn (2016). 'Experiencing film: subjective personal introspection and popular film consumption', *International Journal of Research in Marketing*, **33**, pp. 375–391.
- Hayward, S. (2018). *Cinema Studies: The Key Concepts*, 5th edn. London: Routledge.

- Hayes, A. F. (2013). *Introduction to Mediation, Moderation and Conditional Process Analysis: A Regression-based Approach*. New York: Guilford Press.
- Heath, R. (2007). 'How do we predict advertising attention and engagement?', University of Bath School of Management Working Paper Series No. 2007.09. Available at <http://opus.bath.ac.uk/286/1/2007-09.pdf> [accessed 22 October 2016].
- Heath, R. (2009). 'Emotional engagement: how television builds big brands at low attention', *Journal of Advertising Research*, **49**, pp. 62–73.
- Heding, T., C. F. Knudtzen and M. Bjerre (2008). *Brand Management: Research, Theory and Practice*. New York: Routledge.
- Hennig-Thurau, T., A. Marchand and B. Hiller (2012). 'The relationship between reviewer judgments and motion picture success: re-analysis and extension', *Journal of Cultural Economics*, **36**, pp. 249–283.
- Hennig-Thurau, T., C. Wiertz and F. Feldhaus (2014). 'Does Twitter matter? The impact of micro-blogging word-of-mouth on consumers' adoption of new movies', *Journal of the Academy of Marketing Science*, **43**, pp. 375–394.
- Hollebeek, L. D., M. S. Glynn and R. J. Brodie (2014). 'Consumer brand engagement in social media: conceptualization, scale development and validation', *Journal of Interactive Marketing*, **28**, pp. 149–165.
- Holt, D. (2002). 'Why do brands cause trouble? A dialectical theory of culture and branding', *Journal of Consumer Research*, **29**, pp. 70–96.
- Holt, D. (2004). *How Brands Become Icons: The Principles of Cultural Branding*. Boston, MA: Harvard Business School Press.
- Hu, L. and P. M. Bentler (1999). 'Cutoff criteria for fit indexes in covariance structure analysis: conventional criteria versus new alternatives', *SEM*, **6**, pp. 1–55.
- Janson, A. (2002). 'The mediatization of consumer culture: towards an analytical framework of image culture', *Journal of Consumer Culture*, **2**, pp. 5–31.
- Kapferer, J. N. (2008). *The New Strategic Brand Management: Creating and Sustaining Brand Equity Long Term*. London: Kogan Page.
- Kapferer, J. N. (2012). *The New Strategic Brand Management: Advanced Insights and Strategic Thinking*. London: Kogan Page.
- Kates, S. M. (2004). 'The dynamics of brand legitimacy: an interpretative study in the gay men's community', *Journal of Consumer Research*, **31**, pp. 455–464.
- Keller, K. (1993). 'Conceptualising, measuring and managing customer-based brand equity', *Journal of Marketing*, **57**, pp. 1–22.
- Keller, K. L. (2008). *Strategic Brand Management: Building, Measuring and Managing Brand Equity*, 3rd edn. Upper Saddle River, NJ: Pearson Prentice-Hall.
- Kellner, D. (1995). *Media Culture: Cultural Studies, Identity and Politics Between the Modern and Postmodern*. London: Routledge.
- Kerrigan, F. (2010). *Film Marketing*. Amsterdam: Butterworth-Heinemann.
- Kim, C. K., D. Han and S. B. Park (2001). 'The effect of brand personality and brand identification on brand loyalty: applying the theory of social identification', *Japanese Psychological Research*, **43**, pp. 195–206.
- Kotler, P. (1997). *Marketing Management: Analyses, Planning, Implementation and Control*. Upper Saddle River, NJ: Prentice-Hall.
- Kumar, V. (2013). *Profitable Customer Engagement: Concepts, Metrics & Strategies*. New Delhi: Sage.
- Kumar, V. and A. Pansari (2016). 'Competitive advantage through engagement', *Journal of Marketing Research*, **53**, pp. 497–514.
- Lacher, K. T. and R. Mizerski (1994). 'An exploratory study of the responses and relationships involved in the evaluation of, and in the intention to purchase new rock music', *Journal of Consumer Research*, **21**, pp. 366–380.
- Lam, S. K., M. Ahearne, R. Mullins, B. Hayati and N. Schillewaert (2013). 'Exploring the dynamics of antecedents to consumer-brand identification with a new brand', *Journal of the Academy of Marketing Science*, **41**, pp. 234–252.
- Leckie, C., M. W. Nyadzayo and L. W. Johnson (2016). 'Antecedents of consumer brand engagement and brand loyalty', *Journal of Marketing Management*, **32**, pp. 558–578.
- Lee, D., G. T. Trail, C. Lee and L. J. Schoenstedt (2013). 'Exploring factors that affect purchase intention of athletic team merchandise', *ICHPER-SD Journal of Research*, **8**, pp. 40–48.
- Leenders, M. A. A. M. and J. Eliashberg (2011). 'The antecedents and consequences of restrictive age-based ratings in the global motion picture industry', *International Journal of Research in Marketing*, **28**, pp. 367–377.
- Leininger, M. (1994). 'Evaluation criteria and critique of qualitative studies'. In J. Morse (ed.), *Critical Issues in Qualitative Research Methods*, pp. 95–115. Newbury Park, CA: Sage.
- Maney, R., C. Flink and C. Lietz (2002). 'White paper on consumer centric marketing: how leading consumer packaged good companies are transforming the way they market'. Available at <http://www.dmreview.com/whitepaper/WID494.pdf> [accessed 23 October 2018].
- Mano, H. and R. L. Oliver (1993). 'Assessing the dimensionality and structure of the consumption experience: evaluation, feeling and satisfaction', *Journal of Consumer Research*, **19**, pp. 451–466.
- Mantere, S. and M. Ketokivi (2013). 'Reasoning in organization science', *Academy of Management Review*, **38**, pp. 70–89.
- Marshall, P. D. (2002). 'The new inter-textual commodity'. In D. Harries (ed.), *The New Media Book*. London: British Film Institute.
- Mayne, J. (1993). *Cinema and Spectatorship*. London: Routledge.
- McDaniel, C. Jr. and R. Gates (2009). *Marketing Research Essentials*, 7th edn. Hoboken, NJ: Wiley.
- Mollen, A. and H. Wilson (2010). 'Engagement, telepresence and interactivity in online consumer experience: reconciling scholastic and managerial perspectives', *Journal of Business Research*, **63**, pp. 919–925.
- Muniz, A. M. and T. O'Guinn (2001). 'Brand community', *Journal of Consumer Research*, **27**, pp. 412–432.
- O'Reilly, D. and F. Kerrigan (2013). 'A view to a brand: introducing the film brandscape', *European Journal of Marketing*, **47**, pp. 769–789.
- Oatley, K. (1999). 'Meetings of minds: dialogue, sympathy, and identification, in reading fiction', *Poetics*, **26**, pp. 439–454.
- Pansari, A. and V. Kumar (2017). 'Customer engagement: the construct, antecedents, and consequences', *Journal of the Academy of Marketing Science*, **45**, pp. 294–311.

- Podsakoff, P. M., S. B. MacKenzie, J. Lee and N. P. Podsakoff (2003). 'Common method biases in behavioral research: a critical review of the literature and recommended remedies', *Journal of Applied Psychology*, **88**, pp. 879–903.
- Potter, J. (1996). *Representing Reality: Discourse, Rhetoric and Social Construction*. London: Sage.
- Preacher, K. J. and A. F. Hayes (2008). 'Asymptotic and resampling strategies for assessing and comparing indirect effects in multiple mediator models', *Behaviour Research Methods*, **40**, pp. 879–891.
- Preacher, K. J. and K. Kelley (2011). 'Effect size measures for mediation models: quantitative strategies for communicating indirect effects', *Psychological Methods*, **16**, pp. 93–115.
- Preece, C., F. Kerrigan and D. O'Reilly (2018). 'License to assemble: theorizing brand longevity', *Journal of Consumer Research*, **46**, pp. 330–350.
- Rositer, J. (2002). 'The C-OA-SE procedure for scale development in marketing', *International Journal of Research in Marketing*, **19**, pp. 305–335.
- Ryan, G. W. and H. R. Bernard (2003). 'Techniques to identify themes', *Field Methods*, **15**, pp. 85–109.
- Schmitt, B. (1999). *Experiential Marketing. How to Get Consumers to Sense, Feel, Think, Act, Relate*. New York: Free Press.
- Schneider, F. (2012). 'Measuring subjective movie evaluation criteria: conceptual foundation, construction and validation of the SMEC scales', PhD thesis.
- Schwartz-Shea, P. and D. Yanow (2012). *Interpretive Research Design*. London: Routledge.
- Spiggle, S. (1994). 'Analysis and interpretation of qualitative data in consumer research', *Journal of Consumer Research*, **21**, pp. 491–503.
- Sprott, D., S. Czellar and E. Spangenberg (2009). 'The importance of a general measure of brand engagement on market behaviour: development and validation of a scale', *Journal of Marketing Research*, **46**, pp. 92–104.
- Strauss, A. L. and J. Corbin (1998). *Basics of Qualitative Research: Techniques and Procedures for Developing Grounded Theory*, 2nd edn. Thousand Oaks, CA: Sage.
- Tashakkori, A. and C. Teddlie (1998). *Mixed Methodology: Combining Qualitative and Quantitative Approaches*. Thousand Oaks, CA: Sage.
- Tildesley, A. E. and L. V. Coote (2009). 'This brand is me: a social identity based measure of brand identification', *Advances in Consumer Research*, **36**, pp. 627–628.
- Topalian, A. (2003). 'Experienced reality: the development of corporate identity in the digital era', *European Journal of Marketing*, **37**, pp. 1119–1132.
- Tuškej, U., U. Golob and K. Podnar (2013). 'The role of consumer–brand identification in building brand relationships', *Journal of Business Research*, **66**, pp. 53–59.
- Van Doorn, J., K. N. Lemon, V. Mittal, S. Nass, D. Pick, P. Pirner and P. C. Verhoef (2010). 'Customer engagement behaviour: theoretical foundations and research directions', *Journal of Service Research*, **13**, pp. 253–266.
- Vivek, S. D., S. E. Beatty and R. M. Morgan (2012). 'Customer engagement: exploring customer relationships beyond purchase', *The Journal of Marketing Theory and Practice*, **20**, pp. 122–146.
- Walsh, G., V. Mitchell, P. R. Jackson and S. E. Beatty (2009). 'Examining the antecedents and consequences of corporate reputation: a customer perspective', *British Journal of Management*, **20**, pp. 187–203.
- Wilson, A. (2006). *Marketing Research: An Integrated Approach*, 2nd edn. Harlow: FT Prentice Hall.
- Wright, L. T., M. Stone and J. Abbott (2002). 'The CRM imperative – practice vs theory in the telecommunications industry', *The Journal of Database Marketing*, **9**, pp. 339–349.
- Young, S. M., J. Gong, W. Van der Stede, T. Sandino and F. Du (2008). 'The business of selling movies', *Strategic Finance*, **89**, pp. 35–41.
- Zhao, E. Y., M. Ishihara and M. Lounsbury (2013). 'Overcoming the illegitimacy discount: cultural entrepreneurship in the US feature film industry', *Organisation Studies*, **34**, pp. 1747–1776.
- Zhao, X., J. G. Lynch and Q. Chen (2010). 'Reconsidering Baron and Kenny: myths and truths about mediation analysis', *Journal of Consumer Research*, **37**, p. 197–206.

Gurdeep Singh Kohli is a scholarship recipient (BSc) and has been awarded a PhD in Marketing from Brunel University London. He has published in the *Marketing Review* and has had conference papers accepted for the Academy of Marketing and the European Marketing Academy. He currently teaches Business Management at a FE/HE institution and is a Visiting Lecturer in Marketing at Brunel University London. His research interests include film marketing/branding, experiential goods, iconic brands and consumer–brand relationships.

Dorothy A. Yen is a Reader in Marketing at Brunel University London. She takes on a consumer-centric approach to marketing and branding. Dorothy is particularly interested in exploring how culture affects human behaviour, in both b2b and b2c domains. She has led several special issues in *Industrial Marketing Management*, *Technological Forecasting and Social Change* and *International Marketing Review*. Her works are published in journals such as *Annals of Tourism Research*, *Industrial Marketing Management*, *Journal of Business Research*, etc.

Sharifah Faridah Syed Alwi is a Reader in Corporate Brand Management at Brunel Business School, Brunel University London. She has a PhD from Manchester Business School. Her research works have appeared in the *Business Ethics Quarterly*, *International Marketing Review*, *Journal of Business*

*Research and European Journal of Marketing*. Her main research interest is branding at different levels and entities, including product, corporate and institution.

Suraksha Gupta is a Professor of Marketing at the Newcastle University. Her research focuses on market penetration strategies of international brands in emerging markets and the use of those for achieving sustainable development goals. Her research output has been published in *Journal of World Business*, *Journal of Business Research*, *Industrial Marketing Management*, *Technological Forecasting and Social Change*, *European Journal of Marketing*, *Studies in Higher Education*, *Computers in Human Behaviour* and *British Journal of Management*, among others.

## Supporting Information

Additional supporting information may be found online in the Supporting Information section at the end of the article.

Supplementary Material