

Hydrological Optics 2008 - Supplement

J.J. Nebrensky

**School of Engineering and Design
Brunel University, UK**



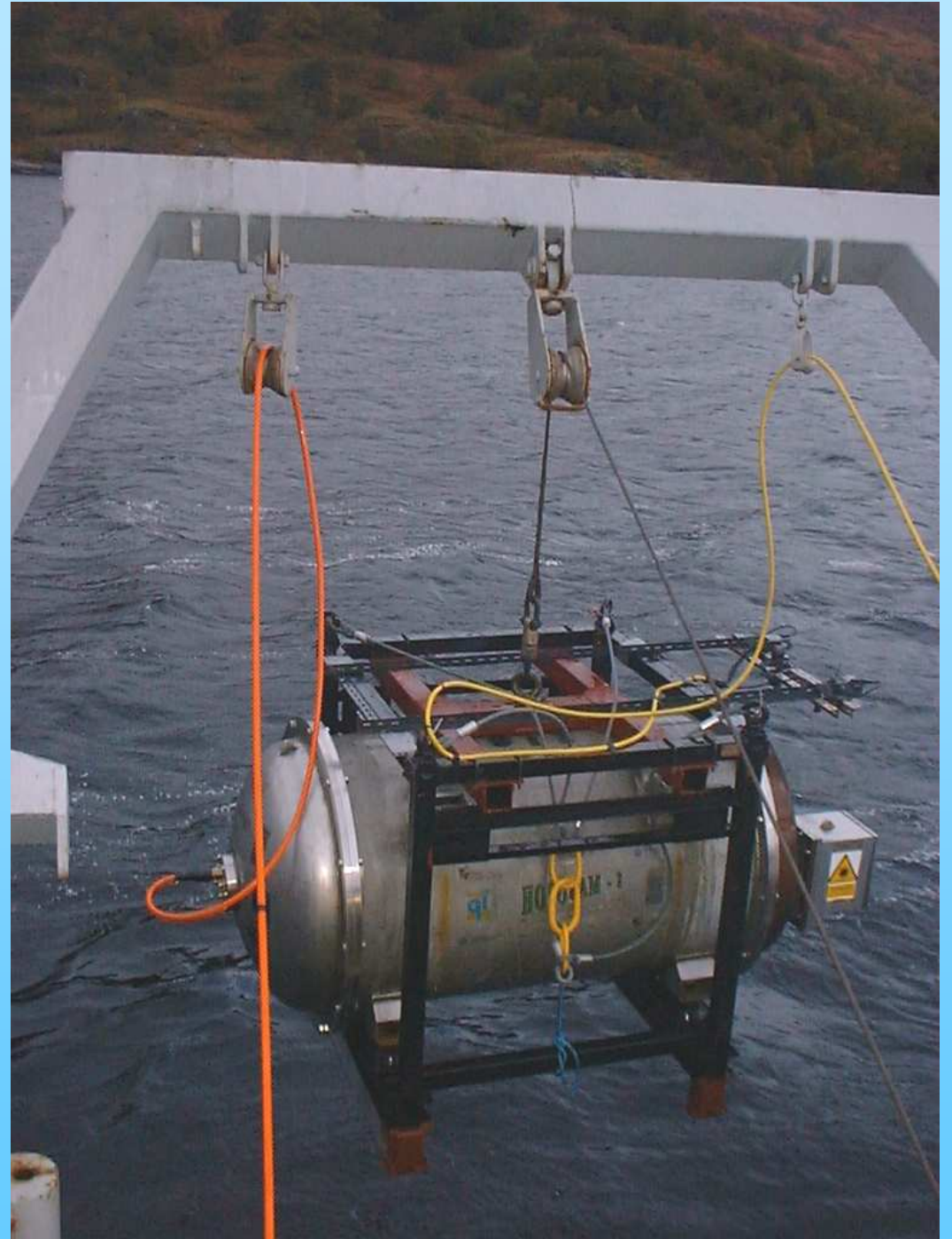
**BRUNEL
UNIVERSITY**

WEST LONDON

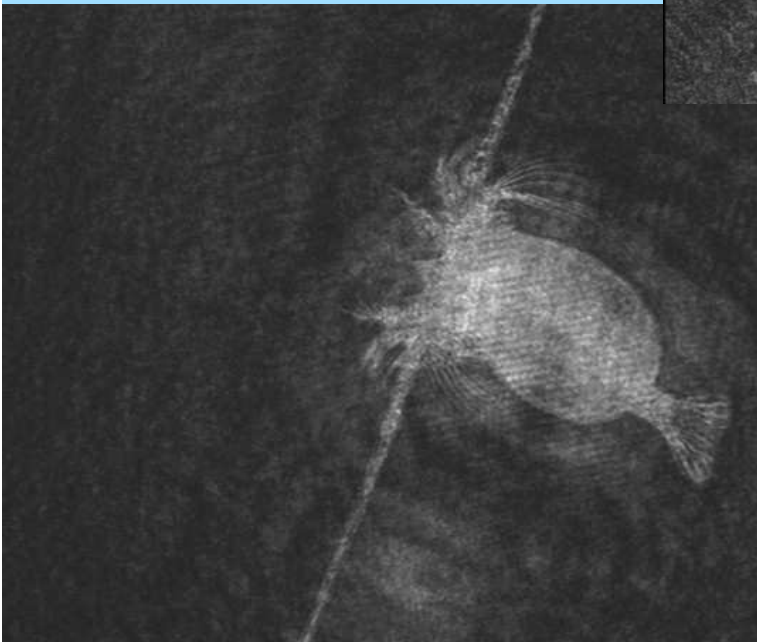
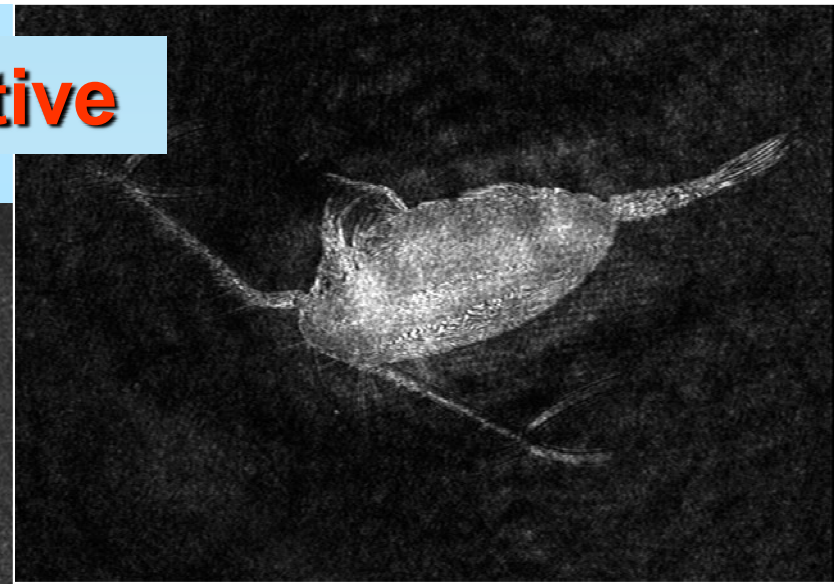
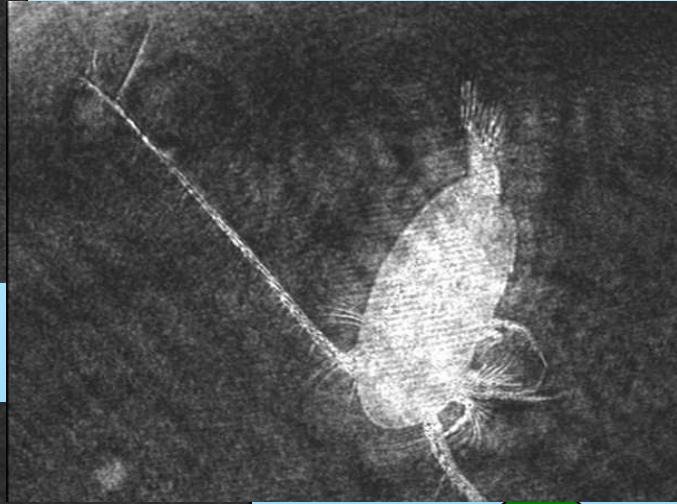
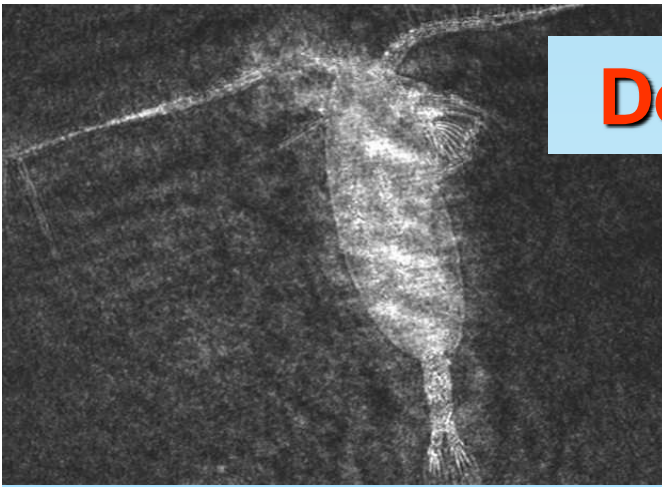
HoloCam launch from the R.V. Calanus



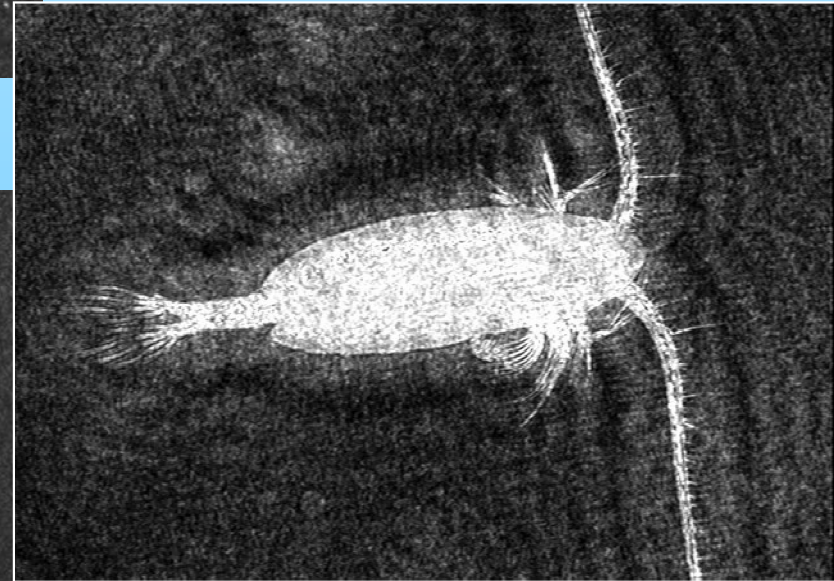
***HoloCam launch
in Loch Etive
from the
R.V. Calanus***



Denizens of Loch Etive

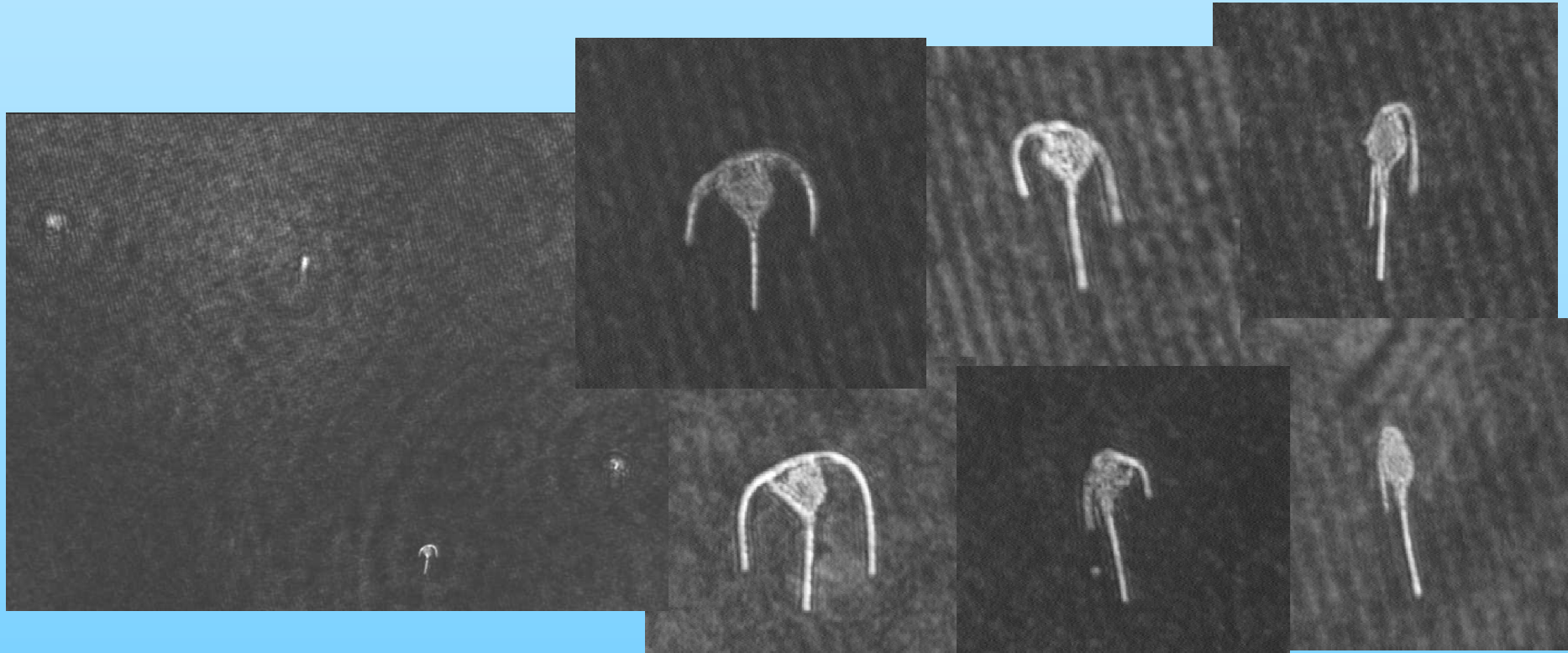


HOLOMAR



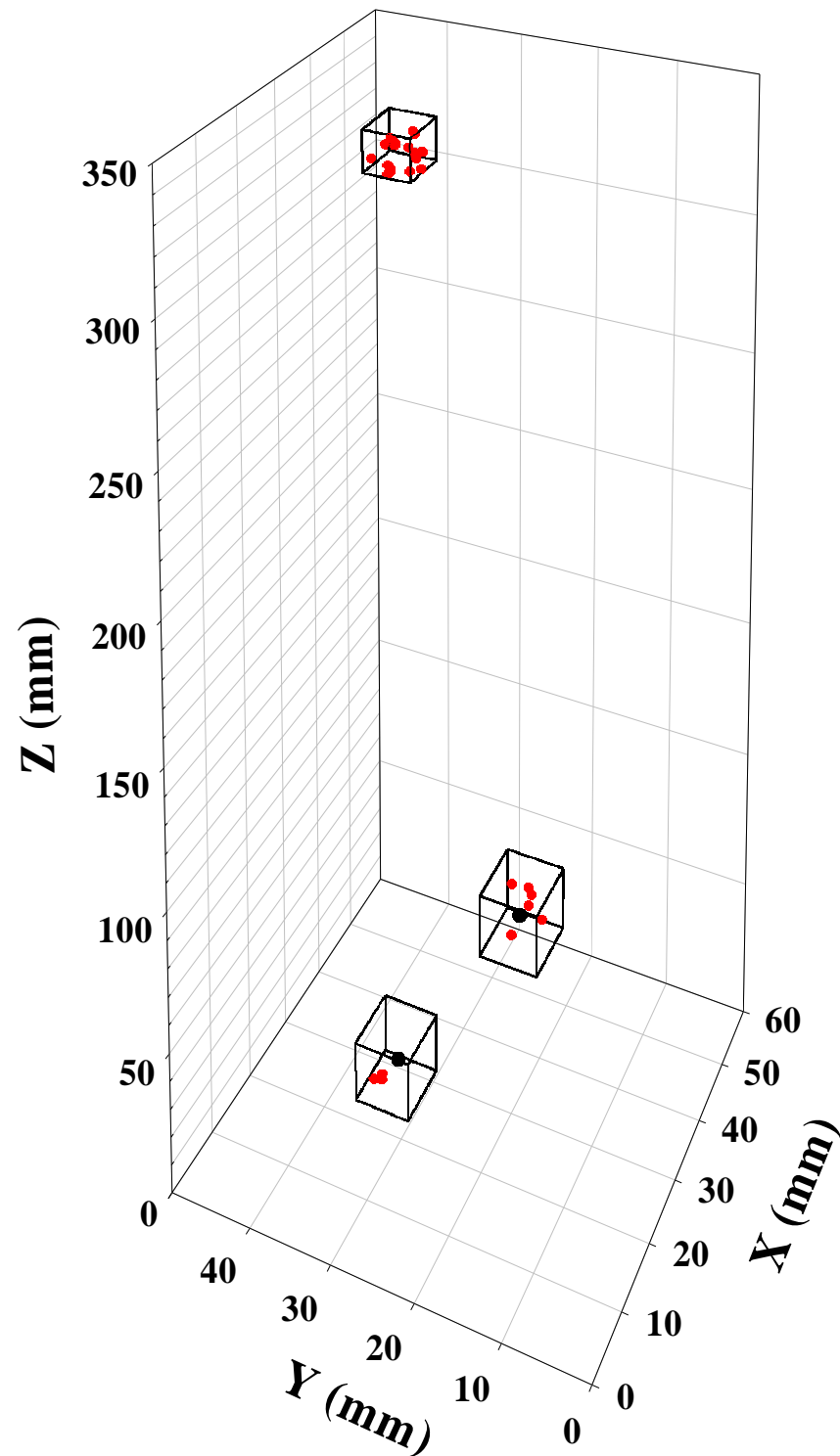
Calanus finmarchicus from holograms at 70 m; 2 mm long and located several tens of centimetres from the exit window.

A selection of *Ceratium* images from a single in-line hologram



The image on the left is a 5.3 mm by 4 mm plane of an in-line hologram at low magnification. The other images, at higher magnification, show a selection of *Ceratium* organisms (approximately 200 μm long) from the same hologram. They were all recorded by in-line holography in a single exposure of a 2.5 litre volume of water. Each organism was at a different location.





Distribution of “targets” around copepods

Holography provides a
link between the
micro- and macro-
scales



Holography

Link between the micro- and macro- scales