

Original Paper

Energy Consumption in the GCC Countries: Evidence on Persistence

Guglielmo M. Caporale¹, Luis A. Gil-Alana^{2,3*} & Manuel Monge³

¹ Brunel University London, Economics, London, United Kingdom

² University of Navarra, Economics, Pamplona, Spain

³ Universidad Francisco de Vitoria, Facultad C. Juridicas y Empresariales, Madrid, Spain

* Luis A. Gil-Alana, University of Navarra, Economics, Pamplona, Spain

Received: November 16, 2019 Accepted: December 3, 2019 Online Published: December 11, 2019

doi:10.22158/ibes.v2n1p

URL: <http://dx.doi.org/10.22158/ibes.v2n1p1>

Abstract

This paper examines the statistical properties of energy consumption in the GCC countries applying fractional integration methods to annual data from 1980 to 2014. The results indicate that both the raw and the logged series exhibit a (statistically significant) linear time trend in the case of Bahrain, Oman and Qatar; and the raw series only in the case of Saudi Arabia. Mean reversion (and thus only transitory effects of shocks) is found in the case of Bahrain for both the raw and logged data, and in Qatar for the logged series. In the remaining cases, the unit root hypothesis (implying permanent effects of shocks) cannot be rejected except for the logged data in Saudi Arabia, since the order of integration of the series is found to be statistically higher than 1 in that country. The implication of these findings is that in the case of Bahrain and Qatar exogenous shocks to energy consumption have transitory effects, which disappear in the long run without the need for policy action, whilst the permanent nature of the effects of shocks elsewhere means that appropriate policies have to be designed to restore equilibrium.

Keywords

fractional integration, energy consumption, GCC countries

1. Introduction

In the last two decades numerous studies have analysed the causal linkages between energy consumption and economic growth as well as other macroeconomic variables; however, many of them have not paid proper attention to the stochastic properties of the energy variables. (Note 1) Narayan and Smith (2007) have stressed the key importance of testing for the possible presence of unit roots in order

to design suitable energy policies based on the appropriate knowledge about the temporary or permanent nature of the effects of exogenous shocks. In particular, non-stationarity in energy consumption can lead to path dependency or hysteresis (see, e.g., Agnolucci et al., 2004; Narayan & Smyth, 2007; Smyth, 2013). Narayan et al. (2010) found that shocks have a temporary effect on energy consumption in Australia and therefore long-run stabilisation policies are not required. However, non-stationarities might spread through the economy as a result of economic relationships involving variables with a stochastic trend (see Hendry & Juselius, 2000; Narayan & Smyth, 2007; Mishra et al., 2009; Hasanov & Telatar, 2011).

Some more recent studies have addressed these issues more carefully. Narayan and Smith (2007), Narayan et al. (2010), Aslan and Kum (2011), Hasanov and Telatar (2011) among others carried out univariate unit root tests, and also tested for cointegration and Granger causality between energy consumption and economic growth. Further, Apergis and Payne (2010), Narayan et al. (2010), Ozcan (2013), Kula (2014), Lean and Smith (2014), Shahbaz and Khan (2014) and others used Lagrange Multiplier (LM) unit root tests with one or two structural breaks that provided evidence of stationarity in most cases. Narayan et al. (2008), Mishra et al. (2009), Apergis et al. (2010), Kum (2012), Bolat et al. (2013) extended this approach to panels and reached similar conclusions. Finally, Ozcan (2013) and Yilanci and Tunali (2014) applied Fourier ADF unit root tests, which are more powerful of standard unit root tests, and also reported that energy variables are stationary.

Of particular interest is the case of the Gulf Cooperation Council (GCC) member states, whose fossil-fuel natural resources represent a large percentage of their total exports and contribute very significantly to gross income and government revenue through taxation, making this region extremely wealthy. However, research on energy consumption in the GCC countries is rather limited. This is the first paper that applies fractional integration methods to examine the time series properties of energy consumption per capita in these countries (specifically, Bahrain, Kuwait, Qatar, Oman, the Kingdom of Saudi Arabia and the United Arab Emirates) using annual data for the period 1980-2014 taken from the World Bank's World Development Indicators Database.

Our analysis is based on the concepts of long-run dependence and long memory and allows for fractional degrees of integration. (Note 2) Therefore the adopted specification is more general and has a more flexible dynamic structure than the standard AutoRegressive (Integrated) Moving Average (AR(I)MA) models only allowing for integers as the order of integration d . Note that if $d < 1$ the effects of shocks will be transitory, whilst $d = 1$ or $d > 1$ imply permanent effects.

On the whole, the contribution to the literature of this study is twofold. First, it presents new empirical evidence concerning energy consumption in the GCC countries, which are clearly the most affected ones when there is an energy crisis, and thus is particularly interesting. Second, it obtains this evidence using empirical methods that improve upon those normally used in the literature by allowing for a much wider range of stochastic behaviours and shedding light on persistence and long memory.

The remainder of the paper is structured as follows. Section 2 outlines the methodology. Section 3

describes the data and discusses the main empirical results. Section 4 offers some concluding remarks.

2. Methodology

The analysis below is based on the concept of long memory. In the time domain, a process $\{x_t, t = 0, \pm 1, \dots\}$ with an autocovariance (or pseudo-autocovariance) function $\gamma_u = \text{Cov}(x_t, x_{t+u})$ is said to exhibit long memory if the sum of its autocovariances is γ_u , i.e.,

$$\sum_{u=-\infty}^{\infty} |\gamma_u| = \infty. \quad (1)$$

In the frequency domain, consider the same process $\{x_t, t = 0, \pm 1, \dots\}$ and assume that it has a spectral density function (or a pseudo spectral density function), which is the Fourier transform of the autocovariances, i.e.,

$$f(\lambda) = \frac{1}{2\pi} \sum_{u=-\infty}^{\infty} \gamma_u e^{i\lambda u} \quad \lambda \in [-\pi, \pi), \quad (2)$$

Then the process x_t is said to exhibit long memory if its spectral density function $f(\lambda)$ has at least one singularity or pole in the spectrum, i.e.,

$$f(\lambda) \rightarrow \infty, \quad \text{as } \lambda \rightarrow \lambda^*, \quad \text{for } \lambda^* \in [-\pi, \pi). \quad)$$

In the time domain short memory is the property of a covariance stationary process with a finite sum of all its autocovariances, i.e.,

$$\sum_{u=-\infty}^{\infty} |\gamma_u| < \infty. \quad (4)$$

whilst in the frequency domain it is a feature of a process with a spectral density function that is positive and finite at all its frequencies on the spectrum, i.e.,

$$0 < f(\lambda) < \infty, \quad \lambda \in [-\pi, \pi), \quad (5)$$

The category of short-memory or I(0) processes includes white noise but also stationary and invertible ARMA processes.

Long memory is a property of unit-root or I(1) processes that become I(0) or stationary by taking first differences. More specifically, a process $\{x_t, t = 0, \pm 1, \dots\}$ is said to be I(1) if it can be represented as

$$(1 - L)x_t = u_t, \quad t = 0, \pm 1, \dots, \quad (6)$$

where $x_t = 0$ for $t \leq 0$, L stands for the lag operator ($Lx_t = x_{t-1}$) and u_t is a $I(0)$ process

defined as above, which can be a white noise or an ARMA process. Note that if u_t is ARMA(p,q), then x_t is said to be an ARIMA (P, 1, q) process. The differencing parameter for making a series I(0) is not necessarily an integer (e.g., 1 as in (6) above) but can be any real number. In other words, one can consider more general models of the form:

$$(1 - L)^d x_t = u_t, \quad t = 0, \pm 1, \dots, \quad (7)$$

where d can be a fraction between 0 or 1, or even exceed 1. In fact, one can use a Binomial expansion such that, for all real value d,

$$(1 - L)^d = \sum_{j=0}^{\infty} \psi_j L^j = \sum_{j=0}^{\infty} \binom{d}{j} (-1)^j L^j = 1 - dL + \frac{d(d-1)}{2} L^2 - \dots,$$

and therefore the left-hand side of (7) can be expressed as

$$(1 - L)^d x_t = x_t - d x_{t-1} + \frac{d(d-1)}{2} x_{t-2} - \dots.$$

This type of processes was introduced by Granger (1980, 1981), Granger and Joyeux (1980) and Hosking (1981) after noticing that many series appeared to be over differenced after differencing them to achieve stationarity. They were made popular in the nineties by Baillie (1996), Gil-Alana and Robinson (1997) and Silverberg and Verspagen (1999), and since then have been widely applied to analyse time series data in various sectors including the energy one (see, e.g., Gil-Alana et al., 2010).

In this context, the parameter d plays a very important role as a measure of the degree of persistence. In particular, if d belongs to the interval $(0, 0.5)$ x_t in (7) is covariance stationary, whereas if $d \geq 0.5$ the process is non-stationary. Also, values of d below 1 imply mean reversion, i.e., the effects of shocks are transitory and disappear in the long run, whilst if $d \geq 1$ they are permanent. Finally, note that if u_t in (7) is an ARMA(p, q) process, then x_t is a fractionally integrated ARMA or ARFIMA(p, d, q) process.

We estimate the fractional differencing parameter using the Whittle function in the frequency domain (Dahlhaus, 1989) applying a parametric testing procedure proposed by Robinson (1994) that is valid even in the presence of non-stationarity. This method allows to test for any real value d in the model given by (6), where x_t can be the errors of a regression model including deterministic terms such as an intercept and/or a linear trend. Moreover, the limit distribution is standard Normal and is not affected by the inclusion of deterministic components or the modelling assumptions about the $I(0)$ disturbance term u_t in (6).

3. Empirical Analysis

3.1 Data

We use data on energy consumption per capita expressed in terms of kg of oil equivalent, annually, from 1980 to 2014 for the GCC countries, namely Bahrain, Kuwait, Qatar, Oman, the Kingdom of Saudi Arabia and the United Arab Emirates. The series were obtained from the World Bank's World Development Indicators Database.

Figure 1 and 2 plot the raw and the logged data respectively. In both cases an upward trend can be noticed in all six GCC countries, which indicates an increasing average energy use per unit of output.

Following the GCC countries' ratification of the Kyoto protocol (in 2005 and 2006) calling for policy actions to limit GHG growth, there have been signs of decelerating demand growth. According to the World Oil Outlook (2017), in the non-OECD region, between 1980 and 1995, efficiency improvements were limited and energy intensity dropped at lower rates than in the OECD, on average by 0.7% per annum (p.a.). However, between 1995 and 2010, efficiency improvements in the non-OECD region

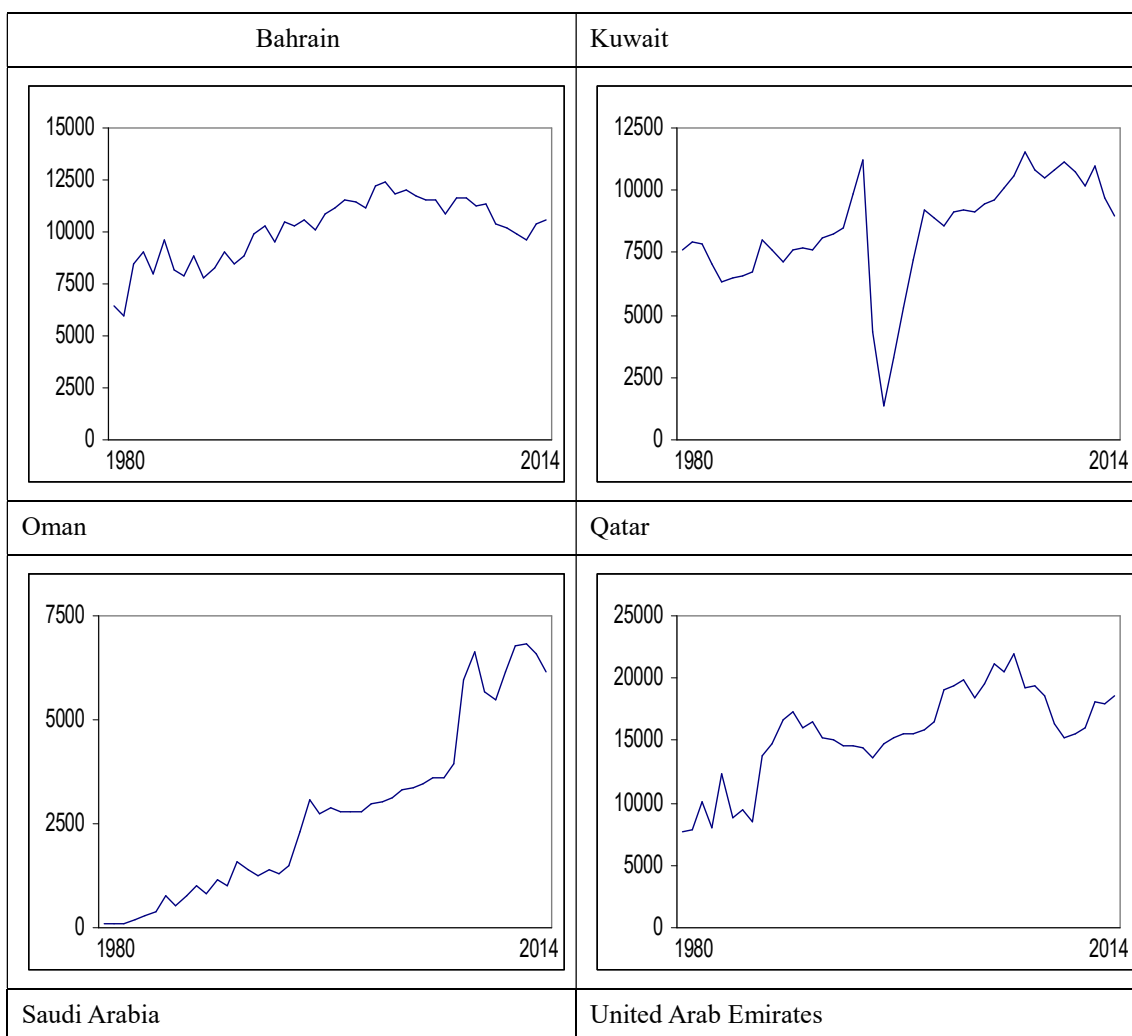
accelerated. Despite the fact that the economy boomed, growing by 5.6% p.a., energy demand increased by only 3.8% p.a., which implies that energy intensity dropped on average by 1.7% p.a.

3.2 Empirical Results

We estimate the following model:

$$y_t = \beta_0 + \beta_1 t + x_t, \quad (1 - L)^d x_t = u_t, \quad t = 0, 1, \dots, \quad (8)$$

where y_t is the time series of interest, β_0 and β_1 are unknown coefficients corresponding respectively to an intercept and a linear time trend, and x_t is assumed to be integrated of order d (or $I(d)$), which implies that u_t in the second equation in (3) is $I(0)$. Table 1 reports the estimated values of d (and their corresponding 95% intervals) for the three cases of no regressors, an intercept, and an intercept with a linear time trend, assuming that the errors follow a white noise process. (Note 3)



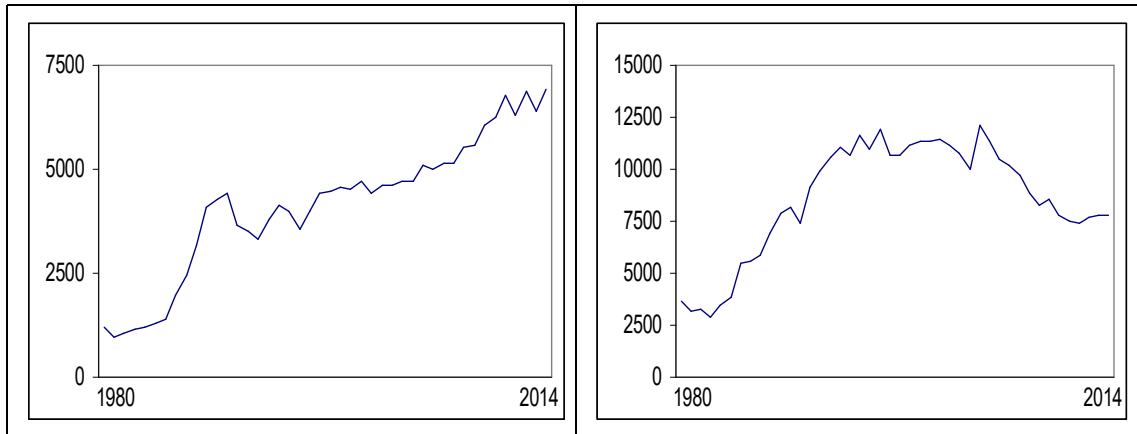
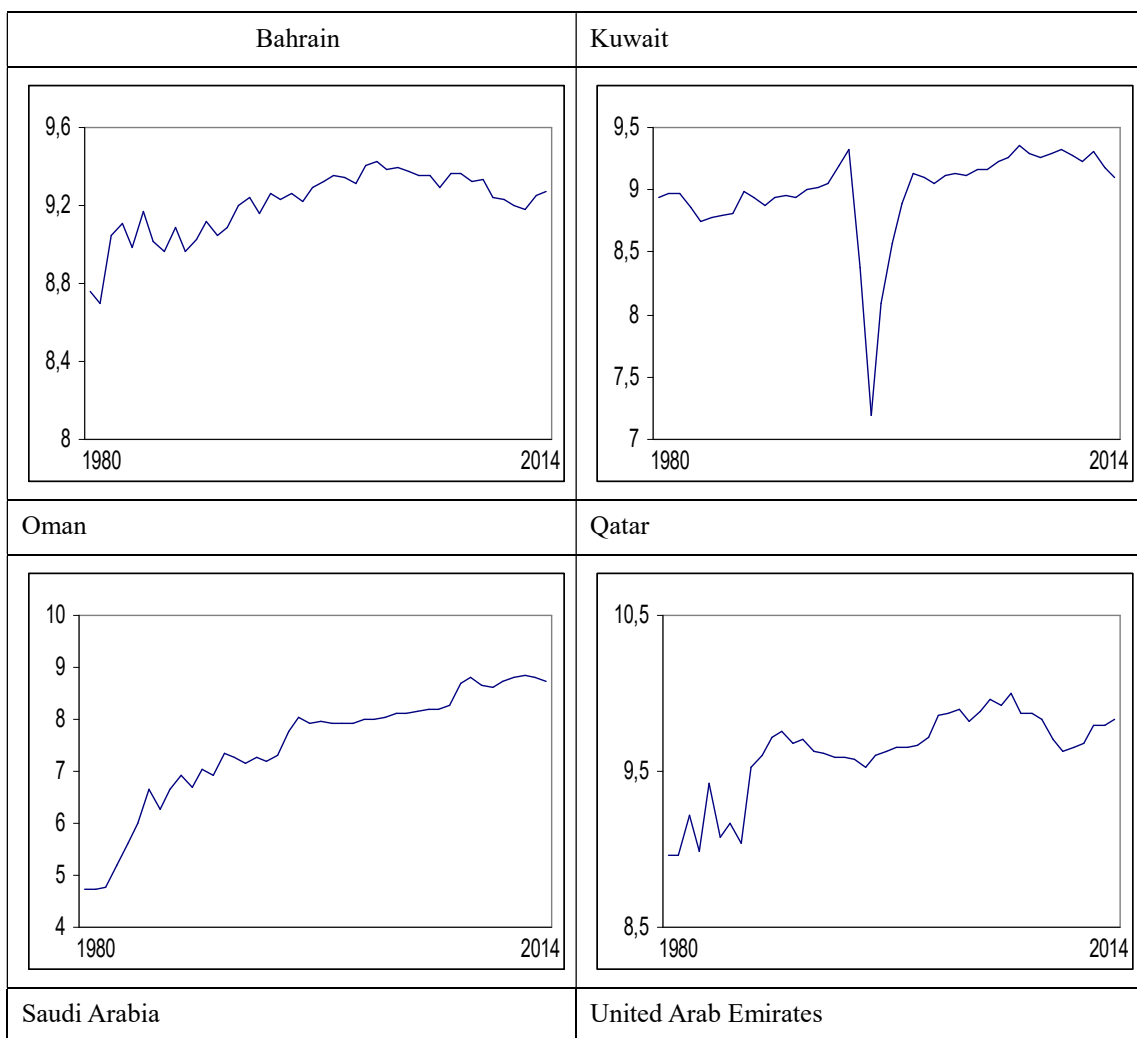


Figure 1. Time Series Plots (Raw Data)



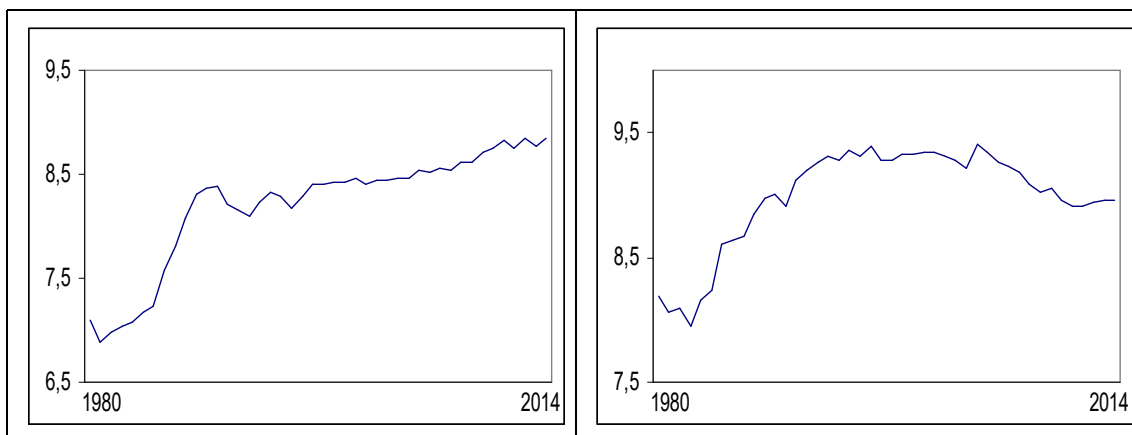


Figure 2. Time Series Plots (Logged Data)

As can be seen, a time trend is required in four cases (Bahrain, Oman, Qatar and Saudi Arabia) for the original series and in three (the same countries except Saudi Arabia) for the logged series. The I(1) hypothesis, i.e., $d = 1$, cannot be rejected in the majority of cases, the confidence interval including one, the exceptions being Bahrain with the raw data and Bahrain and Qatar with the logged ones—in these cases there is evidence of mean reversion, since the estimated value of d is significantly smaller than one. Table 2 reports the estimated values for the intercept and the time trend coefficients for each series. The latter are biggest in the case of Qatar with the raw data and Oman with the logged ones.

Table 1. Estimates of d and 95% Confidence Intervals with Uncorrelated Errors

i) Raw data			
	No terms	An intercept	A linear time trend
BAHRAIN	0.89 (0.69, 1.12)	0.62 (0.50, 0.86)	0.67 (0.53, 0.88)*
KUWAIT	0.75 (0.40, 1.29)	0.89 (0.54, 1.56)	0.89 (0.43, 1.56)
OMAN	0.88 (0.72, 1.40)	0.90 (0.75, 1.42)	0.80 (0.50, 1.43)
QATAR	0.85 (0.61, 1.11)	0.74 (0.55, 1.00)	0.77 (0.59, 0.99)
SAUDI ARAB	0.89 (0.59, 1.25)	0.93 (0.70, 1.27)	0.93 (0.70, 1.26)
U. A. E.	0.98 (0.85, 1.16)	1.04 (0.92, 1.21)	1.04 (0.92, 1.21)
ii) Logged data			
	No terms	An intercept	A linear time trend
BAHRAIN	0.92 (0.73, 1.19)	0.56 (0.44, 0.82)	0.64 (0.48, 0.87)*
KUWAIT	0.89 (0.69, 1.19)	0.76 (0.41, 1.42)	0.75 (0.35, 1.42)
OMAN	0.90 (0.71, 1.15)	0.94 (0.68, 1.22)	0.95 (0.80, 1.18)
QATAR	0.92 (0.73, 1.20)	0.60 (0.46, 0.84)	0.66 (0.50, 0.87)*
SAUDI ARAB	0.90 (0.70, 1.17)	1.28 (1.05, 1.59)	1.26 (1.02, 1.62)

U. A. E.	0.90 (0.71, 1.18)	1.10 (0.97, 1.29)	1.09 (0.97, 1.28)
----------	-------------------	--------------------------	-------------------

*: Statistical evidence of mean reversion at the 5% level.

Table 2. Estimated Coefficients in the Selected Models in Table 1

i) Raw data			
	d (95% band)	Intercept	Time trend
BAHRAIN	0.67 (0.53, 0.88)	6786.67 (10.47)	95.409 (2.57)
KUWAIT	0.89 (0.54, 1.56)	7647.36 (5.55)	----
OMAN	0.80 (0.50, 1.43)	-115.33 (-1.27)	147.24 (4.31)
QATAR	0.77 (0.59, 0.99)	7863.18 (5.14)	245.42 (2.18)
SAUDI ARAB	0.93 (0.70, 1.26)	1052.73 (3.10)	133.21 (3.28)
U. A. E.	1.04 (0.92, 1.21)	3620.85 (4.98)	----
ii) Logged data			
	d (95% band)	Intercept	Time trend
BAHRAIN	0.64 (0.48, 0.87)	8.8253 (119.96)	0.0111 (2.82)
KUWAIT	0.76 (0.41, 1.42)	8.9112 (32.60)	----
OMAN	0.95 (0.80, 1.18)	4.6475 (22.38)	0.0929 (3.50)
QATAR	0.66 (0.50, 0.87)	9.0102 (76.53)	0.0194 (2.95)
SAUDI ARAB	1.28 (1.05, 1.59)	7.1202 (74.55)	----
U. A. E.	1.10 (0.97, 1.29)	8.1998 (83.05)	----

Figures 3 and 4 show the estimated trends for the raw and logged series respectively. There is an upward trend in the case of the raw series in Bahrain, Oman, Qatar and Saudi Arabia (Figure 3), and in the first three of these countries in the case of the logged ones (Figure 4). Note that the estimated values of d are below 1 for Bahrain and Qatar, i.e., mean reversion occurs, whilst in the remaining countries shocks appear to have permanent effects.

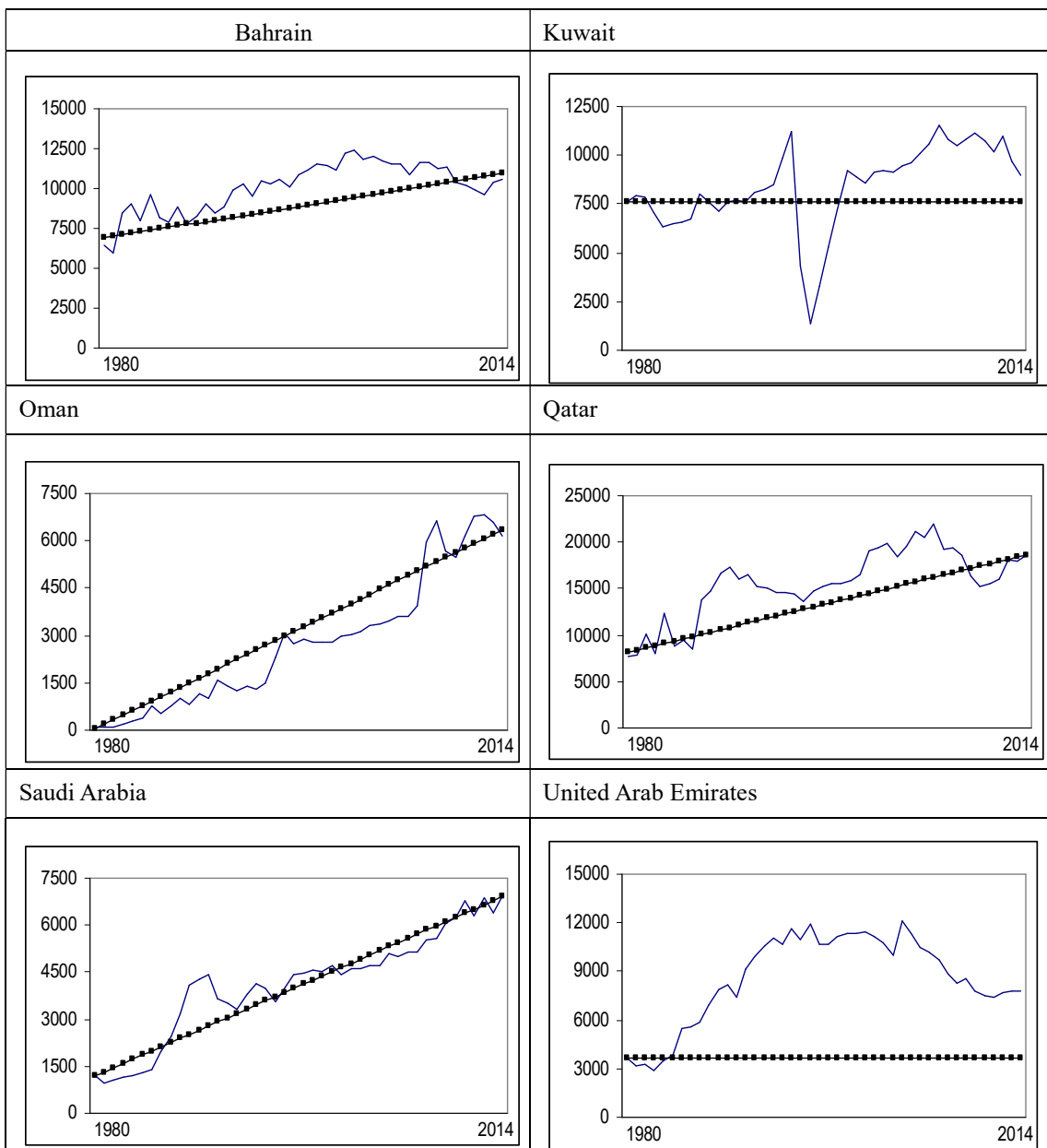
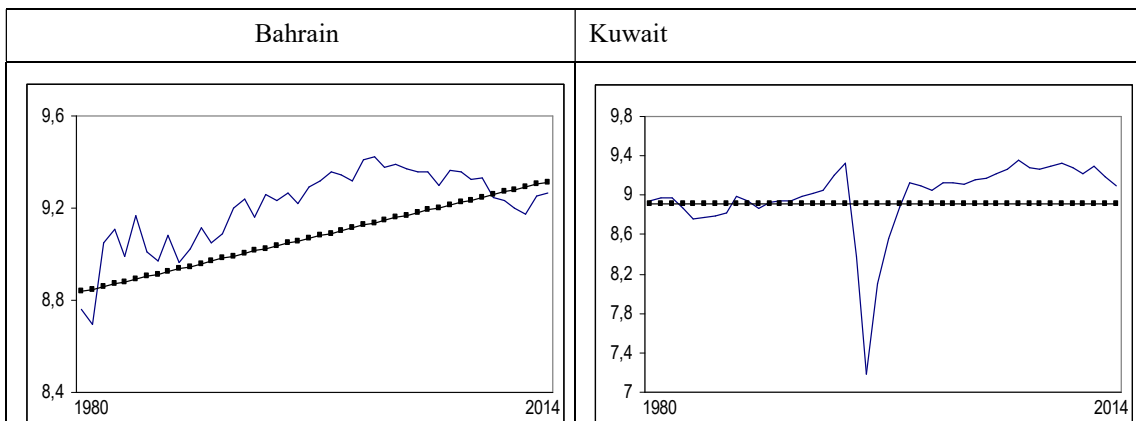


Figure 3. Estimated Time Trends (Raw Data)



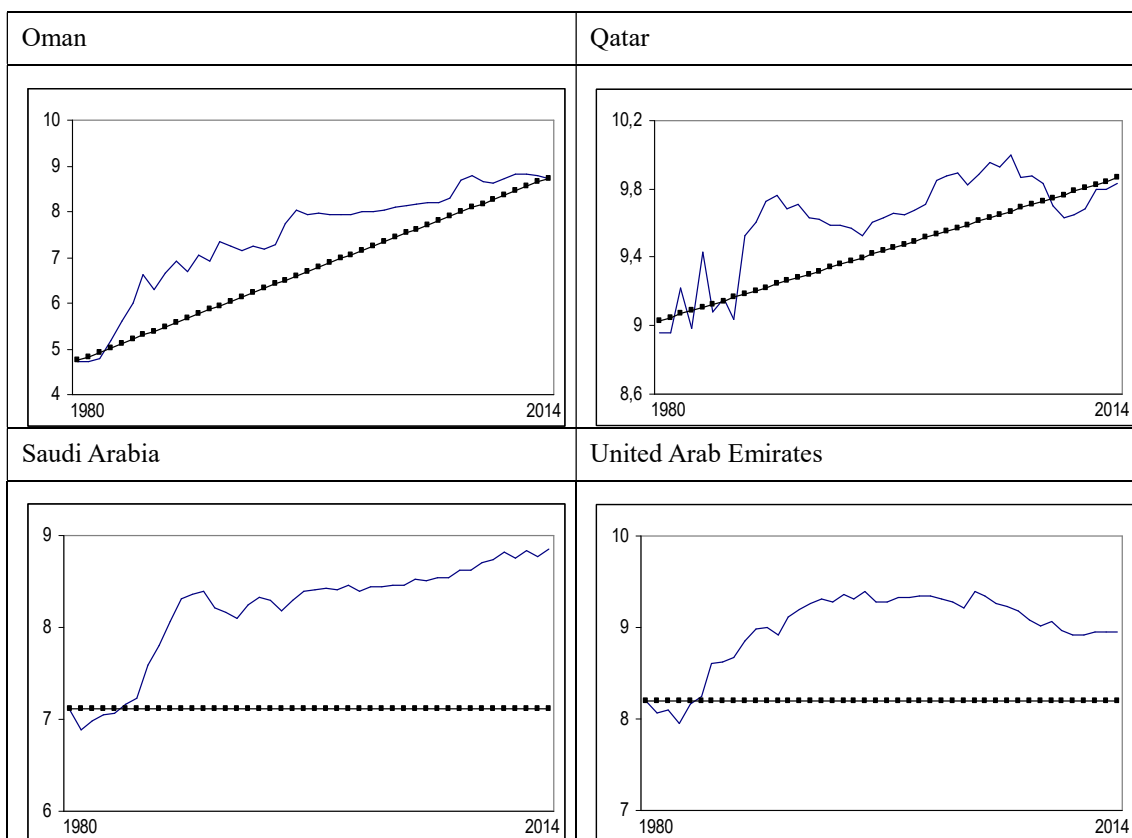


Figure 4. Estimated Time Trends (Logged Data)

4. Conclusions

4.1 General Conclusions

This paper examines the statistical properties of energy consumption in the GCC countries applying fractional integration methods to annual data from 1980 to 2014. These are currently classified as emerging countries engaged in the transformation of their economies through the creation of new industry segments and diversification (see Shkvarya et al., 2017), with energy consumption and economic growth being strongly linked (see Howarth et al., 2017).

Our findings indicate that both the raw and the logged series exhibit a (statistically significant) linear time trend in the case of Bahrain, Oman and Qatar, and the raw series only in the case of Saudi Arabia. Mean reversion (i.e., statistical evidence of $d < 1$) is found in the case of Bahrain for both the raw and logged data, and in Qatar for the logged series. In the remaining cases, the $I(1)$ hypothesis cannot be rejected except for the logged data in Saudi Arabia, since d is found to be statistically higher than 1 in that country.

Future work will analyse possible non-linearities using the method proposed in Cuestas and Gil-Alana (2016) which estimates the order of integration of the series allowing for smooth non-linear terms in the form of Chebyshev polynomials in time-such an approach is suitable for modelling gradual changes as opposed to shifts in the parameters. Other non-linear specifications such as Fourier functions, STAR

or ESTAR models could also be considered. Further, endogenous structural break tests could be carried out using the Bai and Perron's (2003) approach as well as the methods of Hassler and Meller (2004) and Gil-Alana (2008), both of which are specifically designed for the case of fractional integration; this is an important issue, since several studies have argued that long memory can be a spurious phenomenon caused by the presence of breaks in the data that have not been taken into account (see Diebold & Inoue, 2001; Granger & Hyung, 2004, etc.).

4.2 Policy Implications

Determining the integration properties of energy consumption is crucial for forecasting and policy design purposes (Chen & Lee, 2007). Our findings imply that in the case of Bahrain and Qatar exogenous shocks to energy consumption have transitory effects, which disappear in the long run without the need for policy action, whilst the permanent nature of the effects of shocks elsewhere means that appropriate policies have to be designed to restore equilibrium.

The significance of these results is that they highlight some important differences between a group of countries belonging to the same region. Although they are all members of the GCC, they clearly have some economic features that are not common to all of them and imply different responses to energy shocks. This is important information to be taken into account when formulating policies and it suggests that a common policy response would not be appropriate, since it would ignore the existing asymmetries; country-specific measures need to be taken instead.

References

- Agnolucci, P., Barker, T., & Ekins, P. (2004). Hysteresis and energy demand: the Announcement Effects and the effects of the UK Climate Change Levy. In *Applied Environmental Economics Conference* (pp. 1-12). March, the Royal Society, UK.
- Al-Mulali, U., Fereidouni, H. G., & Lee, J. Y. (2014). Electricity consumption from renewable and non-renewable sources and economic growth: Evidence from Latin American countries. *Renewable and Sustainable Energy Reviews*, 30, 290-298. <https://doi.org/10.1016/j.rser.2013.10.006>
- Apergis, N., & Payne, J. E. (2010). Structural breaks and petroleum consumption in US states: Are shocks transitory or permanent? *Energy Policy*, 38, 6375-6378. <https://doi.org/10.1016/j.enpol.2010.06.015>
- Apergis, N., & Tsoumas, C. (2012). Long memory and disaggregated energy consumption: Evidence from fossils, coal and electricity retail in the US. *Energy Economics*, 34, 1082-1087. <https://doi.org/10.1016/j.eneco.2011.09.002>
- Apergis, N., Loomis, D., & Payne, J. E. (2010). Are fluctuations in coal consumption transitory or permanent? Evidence from a panel of US states. *Applied Energy*, 87, 2424-2426. <https://doi.org/10.1016/j.apenergy.2009.12.005>
- Aslan, A., & Kum, H. (2011). The stationary of energy consumption for Turkish disaggregate data by

- employing linear and nonlinear unit root tests. *Energy*, 36, 4256-4258.
<https://doi.org/10.1016/j.energy.2011.04.018>
- Bai, J., & Perron, P. (2003). Computation and Analysis of Multiple Structural Change Models. *Journal of Applied Econometrics*, 18, 1-22. <https://doi.org/10.1002/jae.659>
- Baillie, R. T. (1996). Long memory processes and fractional integration in econometrics. *Journal of Econometrics*, 73, 5-59. [https://doi.org/10.1016/0304-4076\(95\)01732-1](https://doi.org/10.1016/0304-4076(95)01732-1)
- Barros, C. P., Gil-Alana, L. A., & Payne, J. E. (2013). US disaggregated renewable energy consumption: Persistence and long memory behavior. *Energy Economics*, 40, 425-432.
<https://doi.org/10.1016/j.eneco.2013.07.018>
- Belke, A., Dobnik, F., & Dreger, C. (2011). Energy consumption and economic growth: New insights into the cointegration relationship. *Energy Economics*, 33, 782-789.
<https://doi.org/10.1016/j.eneco.2011.02.005>
- Bhattacharya, M., Paramati, S. R., Ozturk, I., & Bhattacharya, S. (2016). The effect of renewable energy consumption on economic growth: Evidence from top 38 countries. *Applied Energy*, 162, 733-741. <https://doi.org/10.1016/j.apenergy.2015.10.104>
- Bloomfield, P. (1973). An exponential model for the spectrum of a scalar time series. *Biometrika*, 60, 217-226. <https://doi.org/10.1093/biomet/60.2.217>
- Bolat, S., Belke, M., & Celik, N. (2013). Mean reverting behavior of energy consumption: Evidence from selected MENA countries. *International Journal of Energy Economics and Policy*, 3, 315.
- Chen, P. F., & Lee, C. C. (2007). Is energy consumption per capita broken stationary? New evidence from regional-based panels. *Energy Policy*, 35, 3526-3540.
<https://doi.org/10.1016/j.enpol.2006.12.027>
- Cowan, W. N., Chang, T., Inglesi-Lotz, R., & Gupta, R. (2014). The nexus of electricity consumption, economic growth and CO2 emissions in the BRICS countries. *Energy Policy*, 66, 359-368.
- Cuestas, J. C., & Gil-Alana, L. A. (2016). A Non-Linear Approach with Long Range Dependence Based on Chebyshev Polynomials. *Studies in Nonlinear Dynamics and Econometrics*, 23, 445-468.
- Dahlhaus, R. (1989). Efficient parameter estimation for self-similar process. *Annals of Statistics*, 17, 1749-1766. <https://doi.org/10.1214/aos/1176347393>
- Diebold, F. X., & Inoue, A. (2001). Long memory and regime switching. *Journal of Econometrics*, 105, 131-159. [https://doi.org/10.1016/S0304-4076\(01\)00073-2](https://doi.org/10.1016/S0304-4076(01)00073-2)
- Gil-Alana, L. A. (2008). Fractional Integration and Structural Breaks at Unknown Periods of Time. *Journal of Time Series Analysis*, 29, 163-185. <https://doi.org/10.1111/j.1467-9892.2007.00550.x>
- Gil-Alana, L. A., & Robinson, P. M. (1997). Testing of unit roots and other nonstationary hypotheses in macroeconomic time series. *Journal of Econometrics*, 80, 241-268.
[https://doi.org/10.1016/S0304-4076\(97\)00038-9](https://doi.org/10.1016/S0304-4076(97)00038-9)
- Gil-Alana, L. A., Loomis, D., & Payne, J. E. (2010). Does energy consumption by the US electric

- power sector exhibit long memory behaviour?. *Energy Policy*, 38(11), 7512-7518.
<https://doi.org/10.1016/j.enpol.2010.07.018>
- Granger, C. W. J. (1980). Long memory relationships and the aggregation of dynamic models. *Journal of Econometrics*, 14, 227-238. [https://doi.org/10.1016/0304-4076\(80\)90092-5](https://doi.org/10.1016/0304-4076(80)90092-5)
- Granger, C. W. J. (1981). Some properties of time series data and their use in econometric model specification. *Journal of Econometrics*, 16, 121-130.
[https://doi.org/10.1016/0304-4076\(81\)90079-8](https://doi.org/10.1016/0304-4076(81)90079-8)
- Granger, C. W. J., & Hyung, N. (2004). Occasional structural breaks and long memory with an application to the S&P 500 absolute stock returns. *Journal of Empirical Finance*, 11, 399-421.
<https://doi.org/10.1016/j.jempfin.2003.03.001>
- Granger, C. W. J., & Joyeux, R. (1980). An introduction to long memory time series models and fractional differencing. *Journal of Time Series Analysis*, 1, 15-39.
<https://doi.org/10.1111/j.1467-9892.1980.tb00297.x>
- Hamit-Hagggar, M. (2012). Greenhouse gas emissions, energy consumption and economic growth: A panel cointegration analysis from Canadian industrial sector perspective. *Energy Economics*, 34, 358-364. <https://doi.org/10.1016/j.eneco.2011.06.005>
- Hasanov, M., & Telatar, E. (2011). A re-examination of stationarity of energy consumption: Evidence from new unit root tests. *Energy Policy*, 39, 7726-7738.
<https://doi.org/10.1016/j.enpol.2011.09.017>
- Hassler, U., & Meller, B. (2014). Detecting Multiple Breaks in Long Memory: The Case of US Inflation. *Empirical Economics*, 46, 653-680. <https://doi.org/10.1007/s00181-013-0691-8>
- Hendry, D. F., & Juselius, K. (2000). Explaining cointegration analysis: Part 1. *The Energy Journal*, 1-42. <https://doi.org/10.5547/ISSN0195-6574-EJ-Vol21-No1-1>
- Hosking, J. R. M. (1981). Fractional differencing. *Biometrika*, 68, 165-176.
<https://doi.org/10.1093/biomet/68.1.165>
- Howarth, N., Galeotti, M., Lanza, A., & Dubey, K. (2017). Economic development and energy consumption in the GCC: An international sectoral analysis. *Energy Transitions*, 1(6), <https://doi.org/10.1007/s41825-017-0006-3>
- Kim, Y. S. (2015). Electricity consumption and economic development: Are countries converging to a common trend? *Energy Economics*, 49, 192-202. <https://doi.org/10.1016/j.eneco.2015.02.001>
- Kula, F. (2014). Is Per Capita Electricity Consumption Non-stationary? A Long-span Study for Turkey. *Energy Sources, Part B: Economics, Planning, and Policy*, 9, 161-164.
<https://doi.org/10.1080/15567249.2010.483447>
- Kum, H. (2012). Are fluctuations in energy consumption transitory or permanent? Evidence from a panel of East Asia & Pacific countries. *International Journal of Energy Economics and Policy*, 2, 92.
- Lean, H. H., & Smyth, R. (2014). Are shocks to disaggregated energy consumption in Malaysia

- permanent or temporary? Evidence from LM unit root tests with structural breaks. *Renewable and Sustainable Energy Reviews*, 31, 319-328. <https://doi.org/10.1016/j.rser.2013.10.040>
- Mishra, V., Sharma, S., & Smyth, R. (2009). Are fluctuations in energy consumption per capita transitory? Evidence from a panel of Pacific Island countries. *Energy Policy*, 37(6), 2318-2326. <https://doi.org/10.1016/j.enpol.2009.02.022>
- Monge, M., Gil-Alana, L. A., & de Gracia, F. P. (2017). Crude oil price behaviour before and after military conflicts and geopolitical events. *Energy*, 120, 79-91. <https://doi.org/10.1016/j.energy.2016.12.102>
- Narayan, P. K., & Smyth, R. (2007). Are shocks to energy consumption permanent or temporary? Evidence from 182 countries. *Energy Policy*, 35, 333-341. <https://doi.org/10.1016/j.enpol.2005.11.027>
- Narayan, P. K., Narayan, S., & Popp, S. (2010). Energy consumption at the state level: The unit root null hypothesis from Australia. *Applied Energy*, 87, 1953-1962. <https://doi.org/10.1016/j.apenergy.2009.10.022>
- Narayan, P. K., Narayan, S., & Smyth, R. (2008). Are oil shocks permanent or temporary? Panel data evidence from crude oil and NGL production in 60 countries. *Energy Economics*, 30, 919-936. <https://doi.org/10.1016/j.eneco.2007.07.005>
- Nayan, S., Kadir, N., Ahmad, M., & Abdullah, M. S. (2013). Revisiting energy consumption and GDP: evidence from dynamic panel data analysis. *Procedia Economics and Finance*, 7, 42-47. [https://doi.org/10.1016/S2212-5671\(13\)00216-5](https://doi.org/10.1016/S2212-5671(13)00216-5)
- Osman, M., Gachino, G., & Hoque, A. (2016). Electricity consumption and economic growth in the GCC countries: Panel data analysis. *Energy Policy*, 98, 318-327. [https://doi.org/10.1016/S2212-5671\(13\)00216-5](https://doi.org/10.1016/S2212-5671(13)00216-5)
- Ozcan, B. (2013). Are shocks to energy consumption permanent or temporary? The case of 17 middle east countries. *Energy Exploration & Exploitation*, 31, 589-605. <https://doi.org/10.1260/0144-5987.31.4.589>
- Robinson, P. M. (1994). Efficient tests of nonstationary hypotheses. *Journal of the American Statistical Association*, 89(428), 1420-1437. <https://doi.org/10.1080/01621459.1994.10476881>
- Shahbaz, M., Khan, S., & Tahir, M. I. (2013). The dynamic links between energy consumption, economic growth, financial development and trade in China: Fresh evidence from multivariate framework analysis. *Energy Economics*, 40, 8-21. <https://doi.org/10.1016/j.eneco.2013.06.006>
- Shahbaz, M., Khraief, N., Mahalik, M. K., & Zaman, K. U. (2014). Are fluctuations in natural gas consumption per capita transitory? Evidence from time series and panel unit root tests. *Energy*, 78, 183-195. <https://doi.org/10.1016/j.energy.2014.09.080>
- Shkvarya, L., & Frolova, Y. (2017). Transformations in Socio-Economic Development of the Gulf Group States. *Economy of Region*, 1(2), 570-578. <https://doi.org/10.17059/2017-2-21>
- Silverberg, G., & Verspagen, B. (1999). Long memory in time series of economic growth and

- convergence. Eindhoven Center for Innovation Studies. *Working Paper*, 99(80).
- Smyth, R. (2013). Are fluctuations in energy variables permanent or transitory? A survey of the literature on the integration properties of energy consumption and production. *Applied Energy*, 104, 371-378. <https://doi.org/10.1016/j.apenergy.2012.10.069>
- Wang, S. S., Zhou, D. Q., Zhou, P., & Wang, Q. W. (2017). CO2 emissions, energy consumption and economic growth in China: A panel data analysis. *Energy Policy*, 39, 4870-4875. <https://doi.org/10.1016/j.enpol.2011.06.032>
- World Oil Outlook. (2017). *OPEC, Organization of the Petroleum Exporting Countries*. Retrieved from <http://www.opec.org>
- Yilanci, V., & Tunali, Ç. B. (2014). Are fluctuations in energy consumption transitory or permanent? Evidence from a Fourier LM unit root test. *Renewable and Sustainable Energy Reviews*, 36, 20-25. <https://doi.org/10.1016/j.rser.2014.04.002>

Notes

Note 1. See Bhattacharya et al. (2016), Osman et al. (2016), Kim (2015), Al-Mulali et al. (2014), Cowan et al. (2014), Nayan et al. (2013), Shahbaz et al. (2013), Hamit-Hagggar (2012), Belke et al. (2011), Wang et al. (2011), among others.

Note 2. Other studies applying this methodology include Barros et al. (2013), Apergis and Tsoumas (2012), Gil-Alana et al. (2010) and Monge et al. (2017), among others.

Note 3. The results are very similar when the errors are assumed to exhibit autocorrelation as in the model of Bloomfield (1973).